

ELEV 123

CAT C,D

CHRISTCHURCH RNAV STAR RWY 02 (3)

NZCH

CHRISTCHURCH CONTROL: 129.3 128.1

CHRISTCHURCH APPROACH: 120.9 126.1 128.75

ATIS: 127.2

TOWER: 118.4 119.65

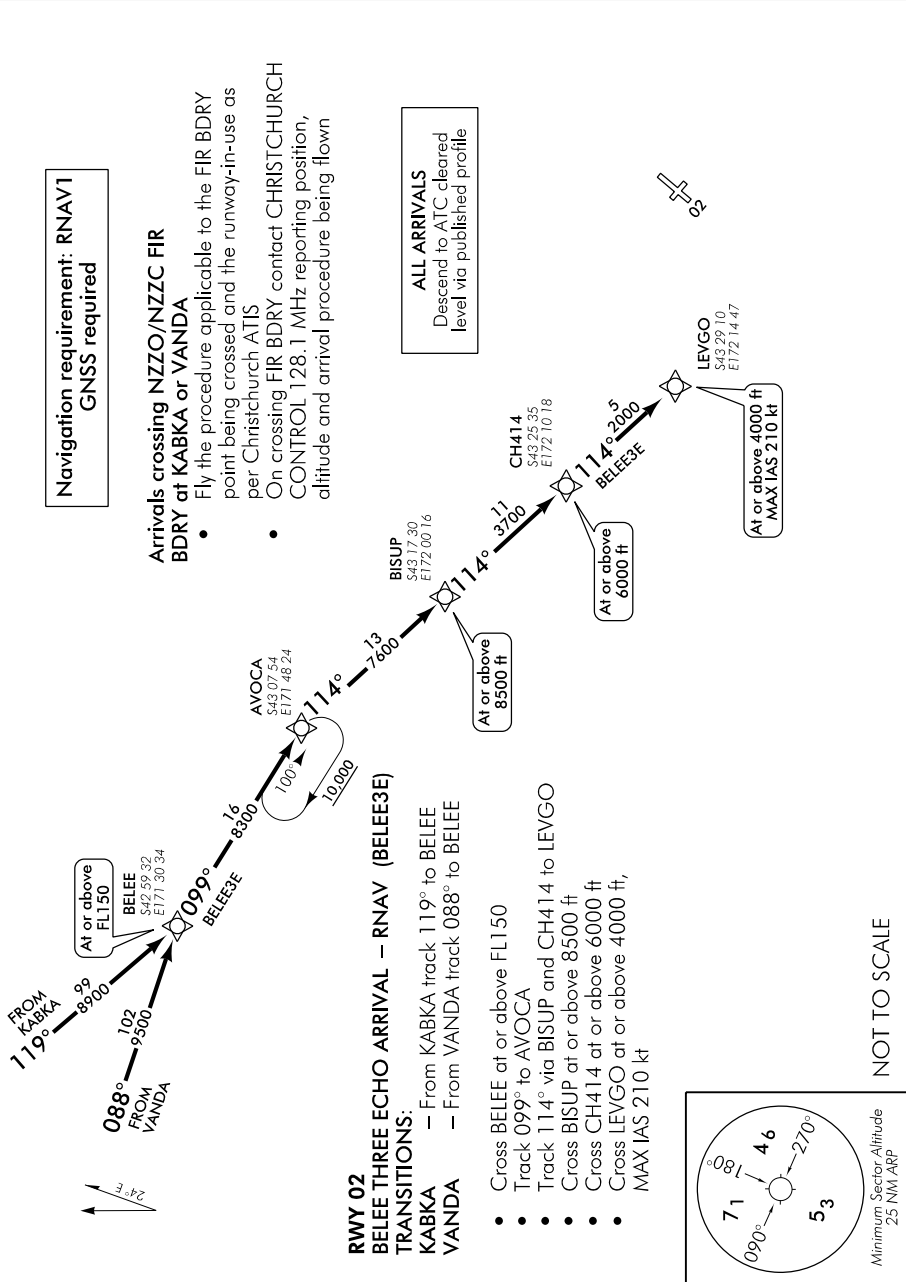
CHRNAVSTAR02-3-G

**Navigation requirement: RNAV1
GNSS required**

Arrivals crossing NZO/NZCC FIR BDRY at KABKA or VANDA

- Fly the procedure applicable to the FIR BDRY point being crossed and the runway-in-use as per Christchurch ATIS
- On crossing FIR BDRY contact CHRISTCHURCH CONTROL 128.1 MHz reporting position, altitude and arrival procedure being flown

ALL ARRIVALS
Descend to ATC cleared level via published profile



Effective: 24 MAY 18

ELEV 133

CAT A,B,C,D

NZCH

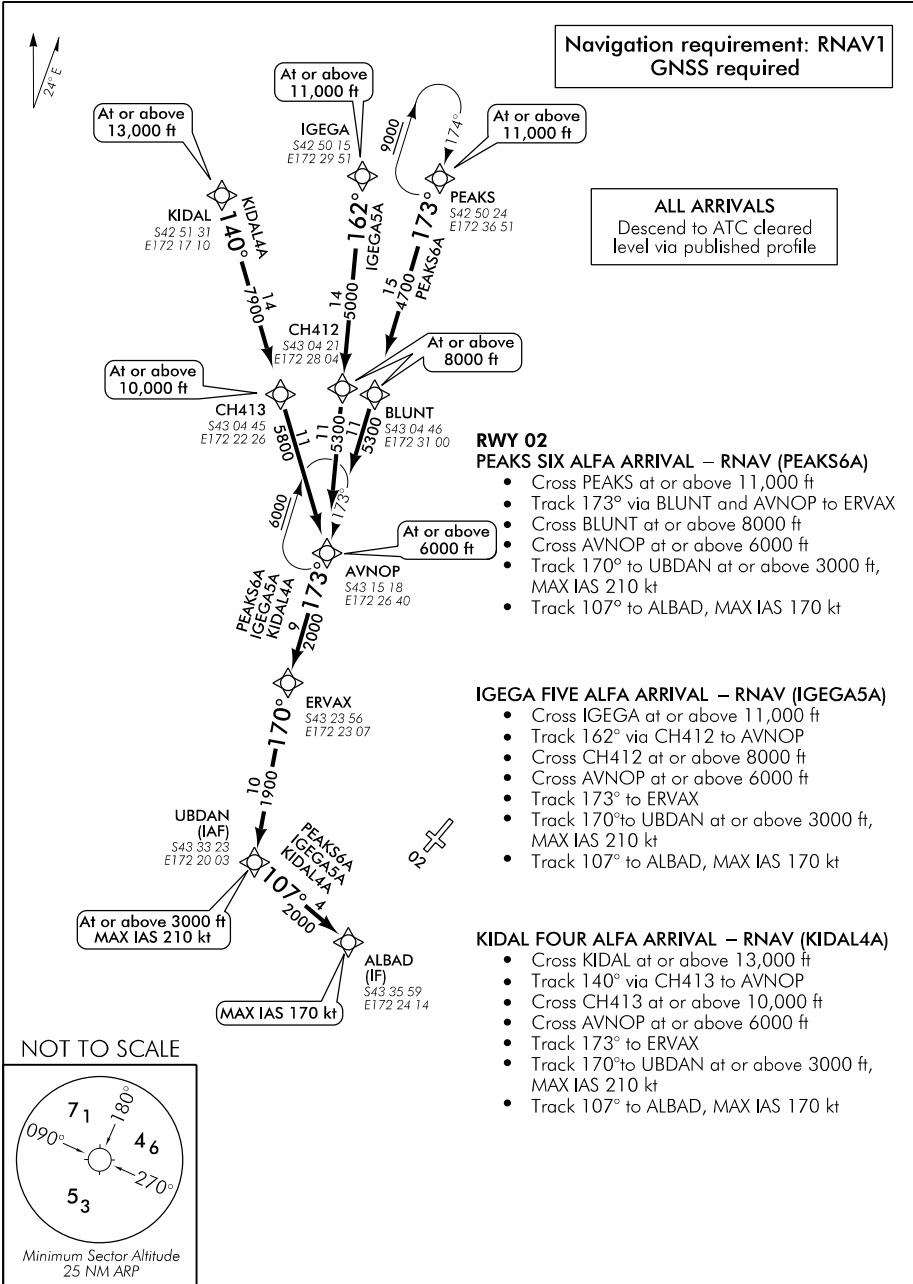
CHRISTCHURCH

RNAV STAR RWY 02 (4)

CHRISTCHURCH APPROACH: 120.9 126.1 128.75 ATIS: 127.2 TOWER: 118.4 119.65

Navigation requirement: RNAV1
GNSS required

ALL ARRIVALS
Descend to ATC cleared
level via published profile



Changes from 9 NOV 17: Procedure maintenance, COM header, ATC call sign.

CHRNAVSTAR02-4-1