

ELEV 123

CAT A,B,C,D

CHRISTCHURCH RNAV STAR RWY 02 (5)

NZCH

CONTROL (AREA): 129.4 128.1

CONTROL (APCH): 120.9 126.1 128.75

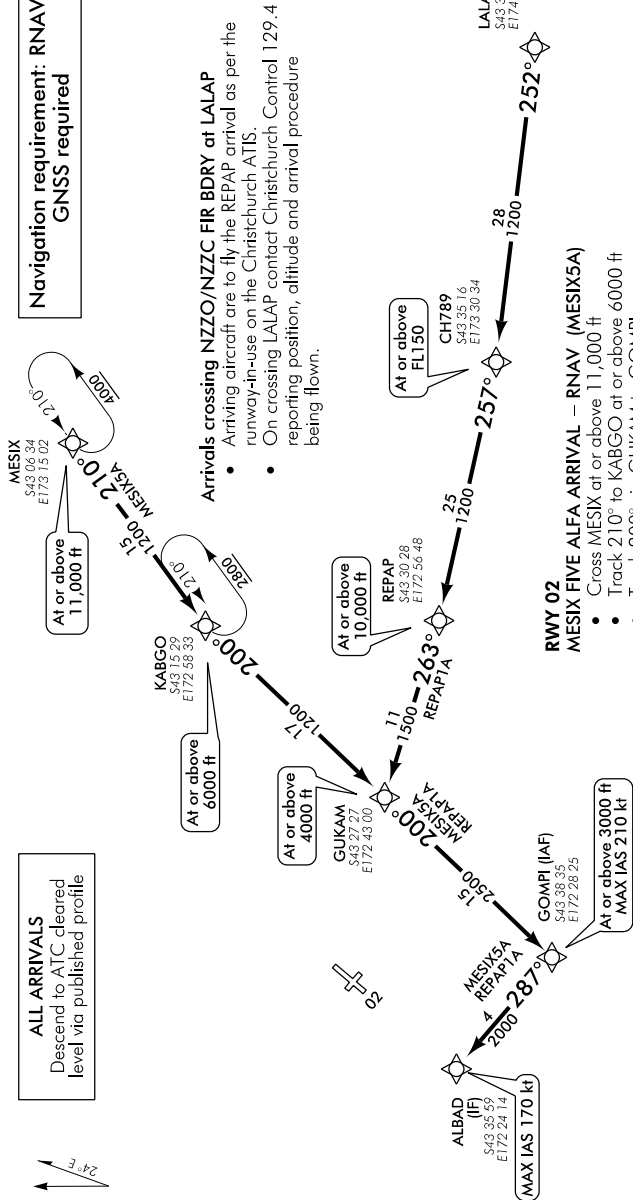
ATIS: 127.2

TOWER: 118.4 119.65

CHRNAVSTAR02-5-E

**Navigation requirement: RNAVI
GNSS required**

ALL ARRIVALS
Descend to ATC cleared
level via published profile

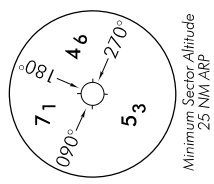


Arrivals crossing NZO/NZCC FIR BDRY at LALAP

- Arriving aircraft are to fly the REPAP arrival as per the runway-in-use on the Christchurch ATIS.
- On crossing LALAP contact Christchurch Control 129.4 reporting position, altitude and arrival procedure being flown.

- RWY 02
MESIX FIVE ALFA ARRIVAL - RNAV (MESIX5A)**
- Cross MESIX at or above 11,000 ft
 - Track 210° to KABGO at or above 6000 ft
 - Track 200° via GUKAM to GOMPI
 - Cross GUKAM at or above 4000 ft
 - Cross GOMPI at or above 3000 ft, MAX IAS 210 kt
 - Track 287° to ALBAD, MAX IAS 170 kt
- REPAP ONE ALFA ARRIVAL - RNAV (REPAP1A)**
- From LALAP track 252° to CH789 at or above FL1150
 - Track 257° to REPAP at or above 10,000 ft
 - Track 263° to GUKAM at or above 4000 ft
 - Track 200° to GOMPI at or above 3000 ft, MAX IAS 210 kt
 - Track 287° to ALBAD, MAX IAS 170 kt

NOT TO SCALE



Changes from: 26 MAY 16: Entire procedure reviewed.

