

ELEV 123

CAT C,D

**CHRISTCHURCH**

NZCH

**RNAV STAR RWY 02 (5)**

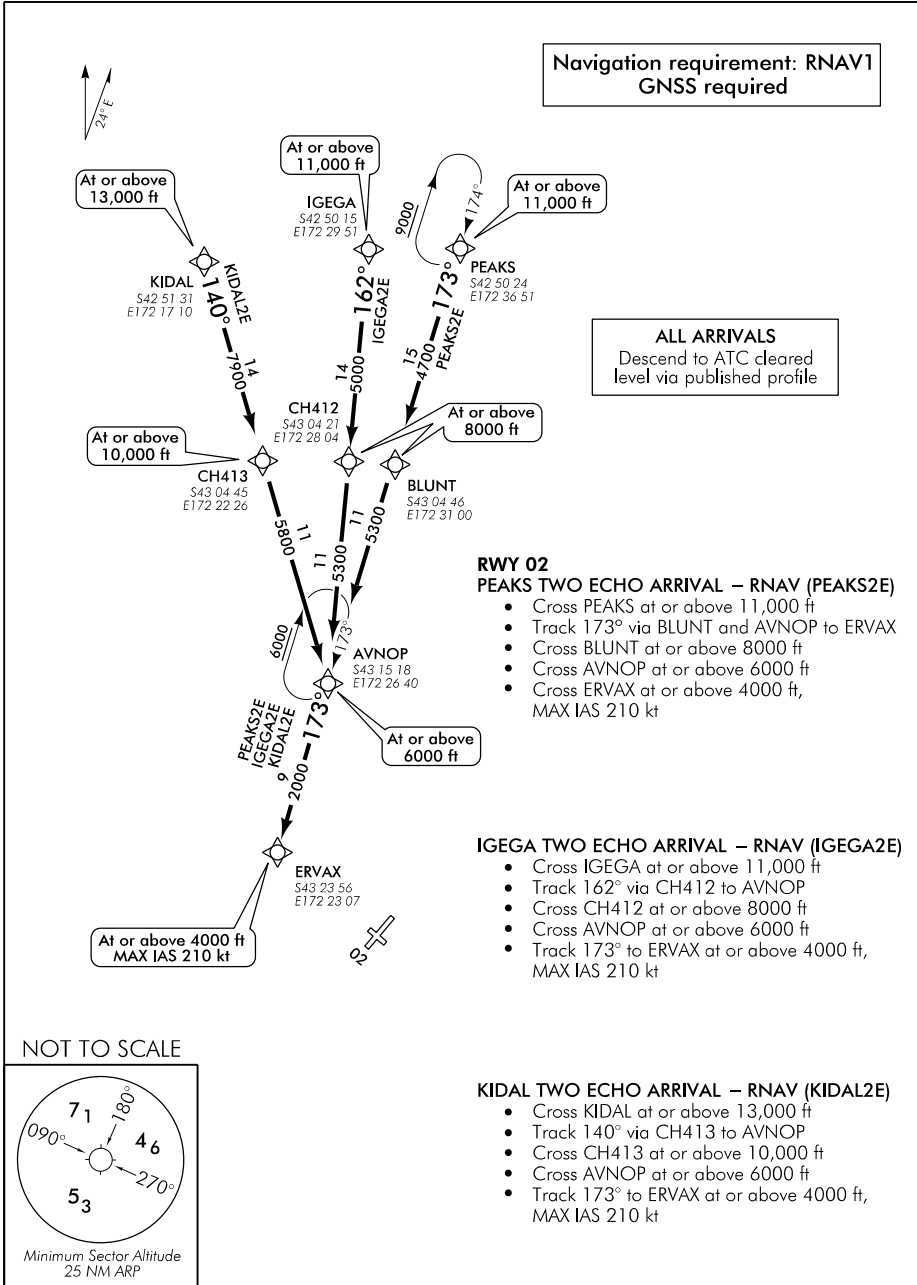
CHRISTCHURCH APPROACH: 120.9 126.1 128.75

ATIS: 127.2

TOWER: 118.4 119.65

Navigation requirement: RNAV1  
GNSS required

**ALL ARRIVALS**  
Descend to ATC cleared level via published profile



CHRNAVSTAR02-5-G

Changes from 9 NOV 17: Procedure maintenance, COM header ATC collsign.

**Effective: 1 FEB 18**

ELEV 123

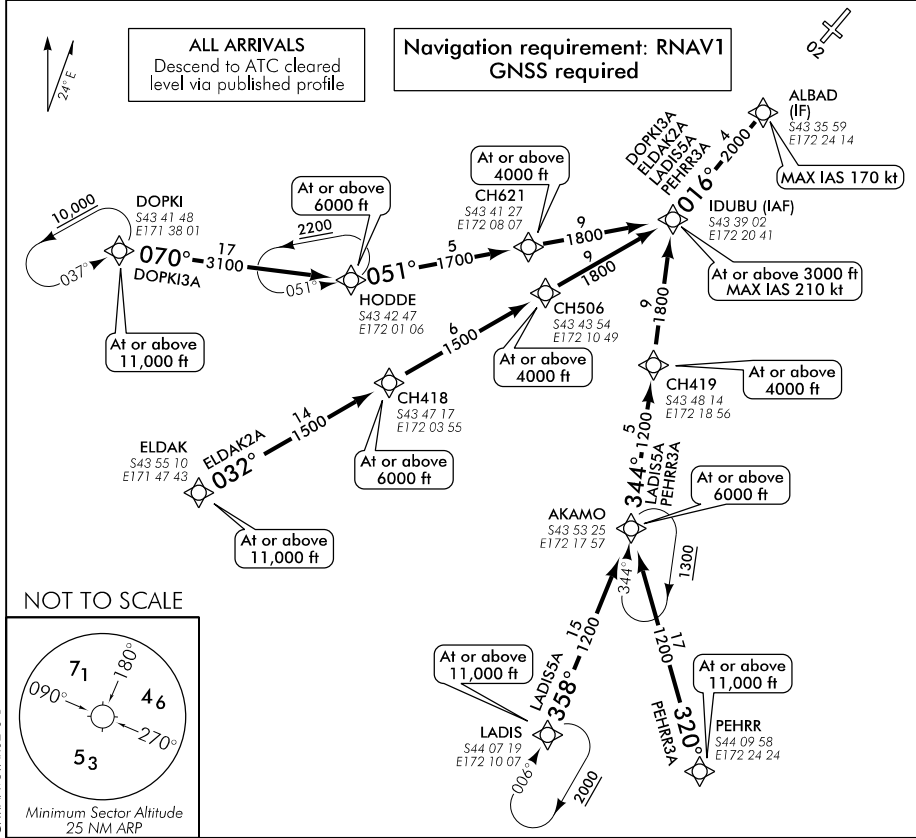
CAT A,B,C,D

# CHRISTCHURCH

NZCH

## RNAV STAR RWY 02 (6)

CHRISTCHURCH APPROACH: 120.9 126.1 128.75 ATIS: 127.2 TOWER: 118.4 119.65



**RWY 02**

**DOPKI THREE ALFA ARRIVAL – RNAV (DOPKI3A)**

- Cross DOPKI at or above 11,000 ft
- Track 070° to HODDE at or above 6000 ft
- Track 051° via CH621 to IDUBU
- Cross CH621 at or above 4000 ft
- Cross IDUBU at or above 3000 ft, MAX IAS 210 kt
- Track 016° to ALBAD, MAX IAS 170 kt

**ELDAK TWO ALFA ARRIVAL – RNAV (ELDAK2A)**

- Cross ELDAK at or above 11,000 ft
- Track 032° via CH418 and CH506 to IDUBU
- Cross CH418 at or above 6000 ft
- Cross CH506 at or above 4000 ft
- Cross IDUBU at or above 3000 ft, MAX IAS 210 kt
- Track 016° to ALBAD, MAX IAS 170 kt

**LADIS FIVE ALFA ARRIVAL – RNAV (LADIS5A)**

- Cross LADIS at or above 11,000 ft
- Track 358° to AKAMO at or above 6000 ft
- Track 344° via CH419 to IDUBU
- Cross CH419 at or above 4000 ft
- Cross IDUBU at or above 3000 ft, MAX IAS 210 kt
- Track 016° to ALBAD, MAX IAS 170 kt

**PEHRR THREE ALFA ARRIVAL – RNAV (PEHRR3A)**

- Cross PEHRR at or above 11,000 ft
- Track 320° to AKAMO at or above 6000 ft
- Track 344° via CH419 to IDUBU
- Cross CH419 at or above 4000 ft
- Cross IDUBU at or above 3000 ft, MAX IAS 210 kt
- Track 016° to ALBAD, MAX IAS 170 kt