

ELEV 123

CAT C,D

CHRISTCHURCH RNAV STAR RWY 02 (8)

CHRISTCHURCH CONTROL: 129.4 128.1

CHRISTCHURCH APPROACH: 126.1 120.9 128.75

ATIS: 127.2

TOWER: 118.4 119.65

CHRNAVSTAR02-8-B



ALL ARRIVALS

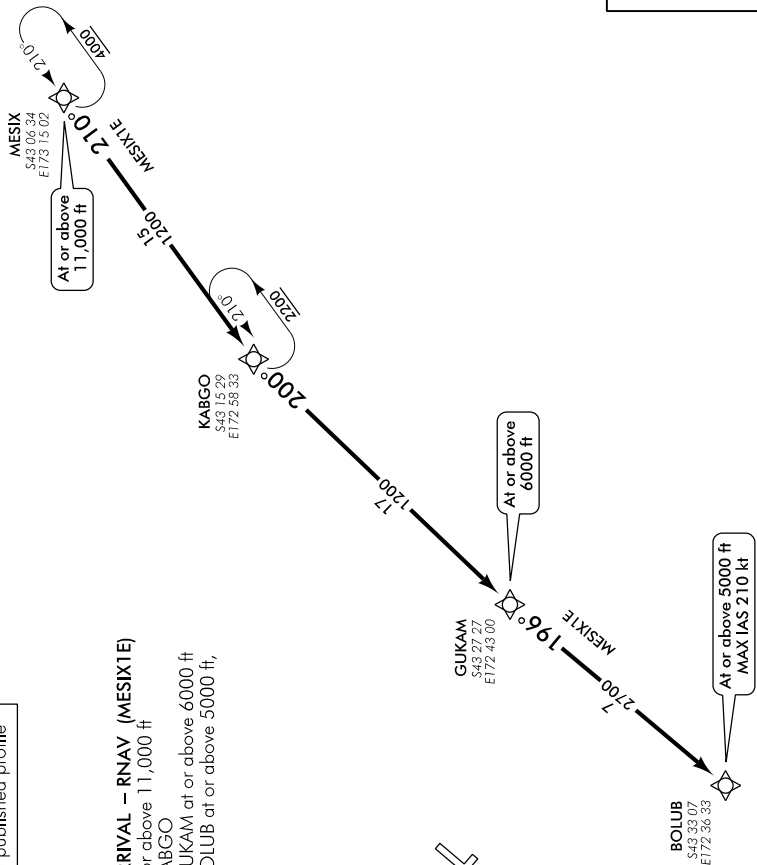
Descend to ATC cleared level via published profile

Navigation requirement: RNAV1

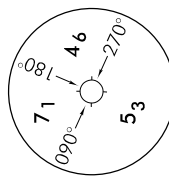
RWY 02

MESIX ONE ECHO ARRIVAL – RNAV (MESIX1E)

- Cross MESIX at or above 11,000 ft
- Track 210° to KABGO
- Track 200° to GUKAM at or above 6000 ft
- Track 196° to BOLUB at or above 5000 ft, MAX IAS 210 kt



NOT TO SCALE



Minimum Sector Altitude
25 NM ARP

Changes from 9 NOV 17: COM header/ATC callsign, KABGO hold lower limit.