

ELEV 123

CAT A,B,C,D

CHRISTCHURCH RNAV STAR RWY 20 (3)

NZCH

CONTROL: 120.9 126.1 128.75

ATIS: 127.2

TOWER: 118.4 119.65



ALL ARRIVALS
Descend to ATC cleared level via published profile

**Navigation requirement: RNAV1
GNSS required**

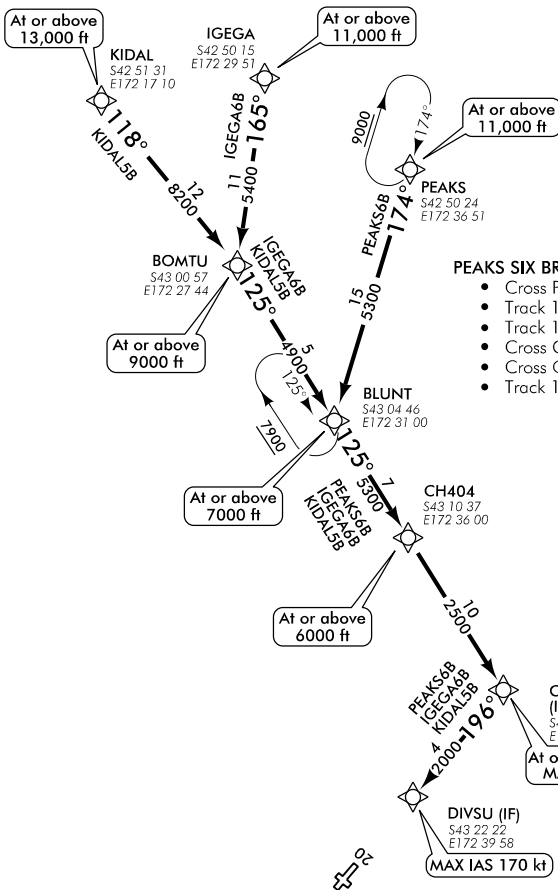
RWY 20

KIDAL FIVE BRAVO ARRIVAL – RNAV (KIDAL5B)

- Cross KIDAL at or above 13,000 ft
- Track 118° to BOMTU at or above 9000 ft
- Track 125° via BLUNT and CH404 to ODISI
- Cross BLUNT at or above 7000 ft
- Cross CH404 at or above 6000 ft
- Cross ODISI at or above 3000 ft, MAX IAS 210 kt
- Track 196° to DIVSU, MAX IAS 170 kt

IGEGA SIX BRAVO ARRIVAL – RNAV (IGEGA6B)

- Cross IGEGA at or above 11,000 ft
- Track 165° to BOMTU at or above 9000 ft
- Track 125° via BLUNT and CH404 to ODISI
- Cross BLUNT at or above 7000 ft
- Cross CH404 at or above 6000 ft
- Cross ODISI at or above 3000 ft, MAX IAS 210 kt
- Track 196° to DIVSU, MAX IAS 170 kt



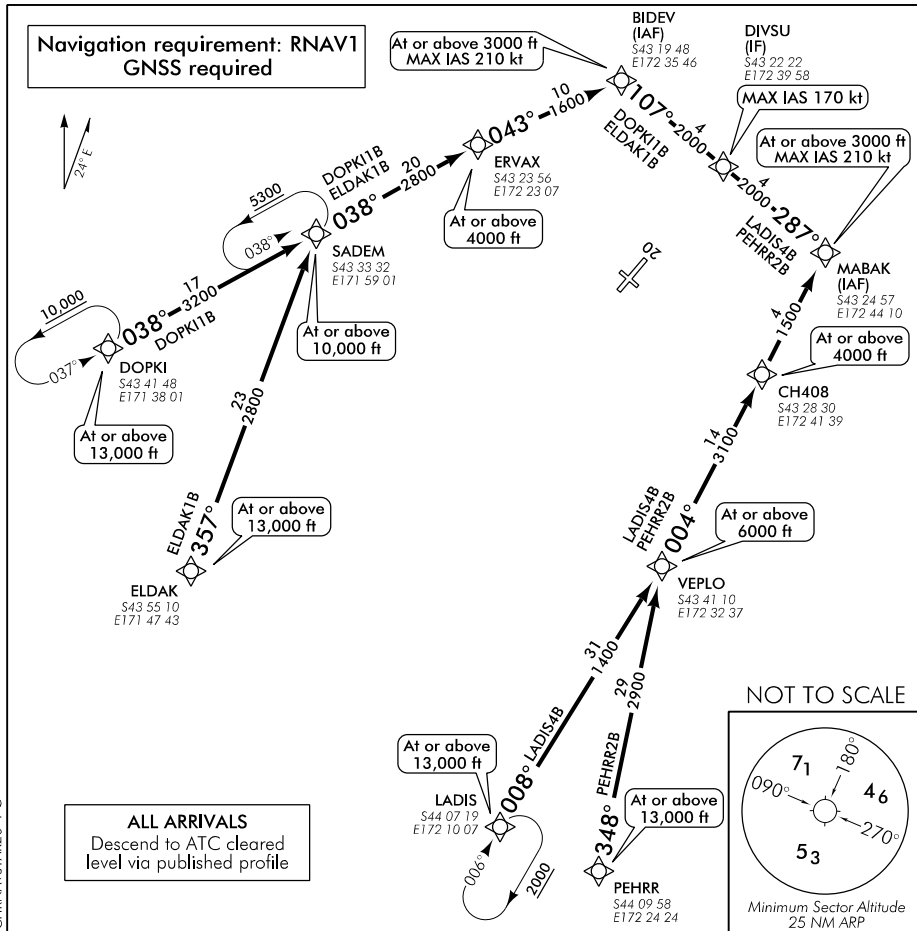
CHRNAVSTAR20-3-M

Changes from 12 NOV 15: TWR FREQ and FREQ editorial, arrival names and tracks.

Effective: 26 MAY 16

© Civil Aviation Authority

CHRISTCHURCH RNAV STAR RWY 20 (3)



Changes from 12 NOV 15: TWR FREQ and FREQ editorial.

RWY 20

DOPKI ONE BRAVO ARRIVAL – RNAV (DOPKI1B)

- Cross DOPKI at or above 13,000 ft
- Track 038° via SADEM to ERVAX
- Cross SADEM at or above 10,000 ft
- Cross ERVAX at or above 4000 ft
- Track 043° to BIDEV at or above 3000 ft, MAX IAS 210 kt
- Track 107° to DIVSU, MAX IAS 170 kt

ELDAK ONE BRAVO ARRIVAL – RNAV (ELDAK1B)

- Cross ELDAK at or above 13,000 ft
- Track 357° to SADEM at or above 10,000 ft
- Track 038° to ERVAX at or above 4000 ft
- Track 043° to BIDEV at or above 3000 ft, MAX IAS 210 kt
- Track 107° to DIVSU, MAX IAS 170 kt

LADIS FOUR BRAVO ARRIVAL – RNAV (LADIS4B)

- Cross LADIS at or above 13,000 ft
- Track 008° to VEPLO at or above 6000 ft
- Track 004° via CH408 to MABAK
- Cross CH408 at or above 4000 ft
- Cross MABAK at or above 3000 ft, MAX IAS 210 kt
- Track 287° to DIVSU, MAX IAS 170 kt

PEHRR TWO BRAVO ARRIVAL – RNAV (PEHRR2B)

- Cross PEHRR at or above 13,000 ft
- Track 348° to VEPLO at or above 6000 ft
- Track 004° via CH408 to MABAK
- Cross CH408 at or above 4000 ft
- Cross MABAK at or above 3000 ft, MAX IAS 210 kt
- Track 287° to DIVSU, MAX IAS 170 kt