

ELEV 123

CAT A,B,C,D

CHRISTCHURCH RNAV STAR RWY 20 (1)

NZCH

CHRISTCHURCH CONTROL: 129.3 128.1

CHRISTCHURCH APPROACH: 120.9 126.1 128.75

ATIS: 127.2

TOWER: 118.4 119.65

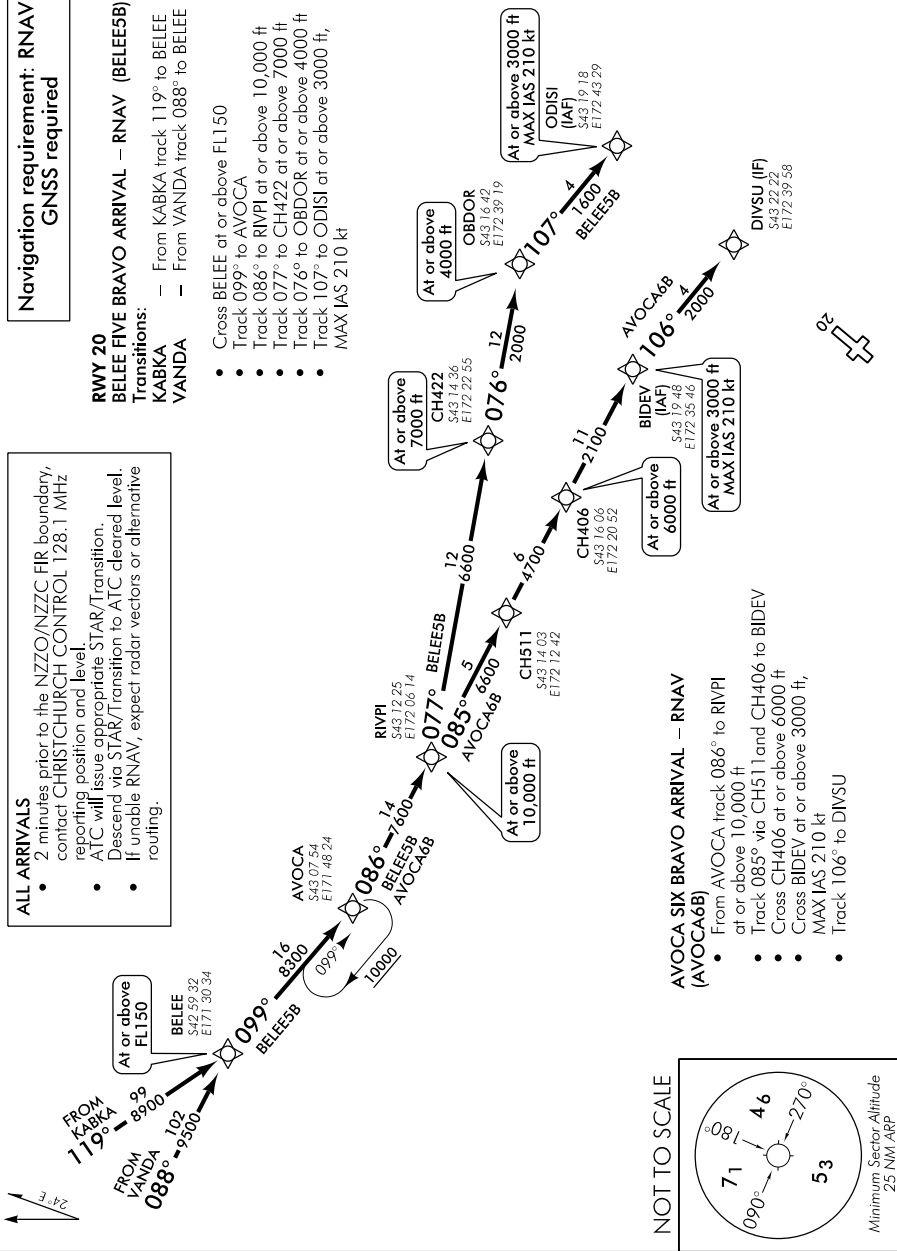
**Navigation requirement: RNAV1
GNSS required**

**RWY 20
BELEE FIVE BRAVO ARRIVAL – RNAV (BELEESB)**
KABKA – From KABKA track 119° to BELEE
VANDA – From VANDA track 088° to BELEE

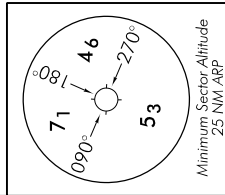
- Cross BELEE at or above FL150
- Track 099° to AVOCA
- Track 086° to RIVPI at or above 10,000 ft
- Track 077° to CH422 at or above 7000 ft
- Track 076° to OBDOR at or above 4000 ft
- Track 107° to ODISI at or above 3000 ft, MAX IAS 210 kt

ALL ARRIVALS

- 2 minutes prior to the NZSO/NZCC FIR boundary, contact CHRISTCHURCH CONTROL 128.1 MHz reporting position and level.
- ATC will issue appropriate STAR/Transition.
- Descend via STAR/T transition to ATC cleared level.
- If unable RNAV, expect radar vectors or alternative routing.



NOT TO SCALE



- AVOCA SIX BRAVO ARRIVAL – RNAV (AVOCA6B)**
- From AVOCA track 086° to RIVPI at or above 10,000 ft
 - Track 085° via CH511 and CH406 to BIDEV
 - Cross CH406 at or above 6000 ft
 - Cross BIDEV at or above 3000 ft, MAX IAS 210 kt
 - Track 106° to DIVSU

CHRNAVSTAR20-INTL-I-J

Changes from 26 MAR 20: AVOCA HLDG pattern INBD course updated.

Effective: 16 JUL 20

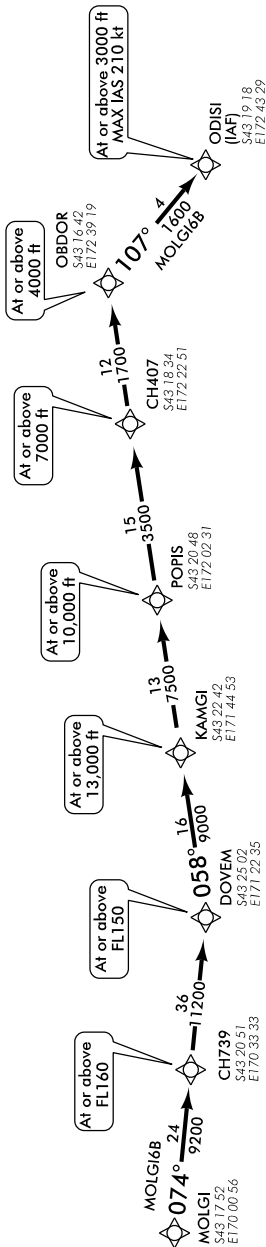
© Civil Aviation Authority

CHRISTCHURCH RNAV STAR RWY 20 (1)

Navigation requirement: RNAV1
GNSS required

ALL ARRIVALS

- At EKODA contact CHRISTCHURCH CONTROL 129.3 MHz reporting position and level.
- ATC will issue appropriate STAR/Transition.
- Descend via STAR/Transition to ATC cleared level.
- If unable RNAV, expect radar vectors or alternative routing.

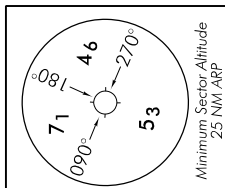


RWY 20

MOLGI SIX BRAVO ARRIVAL – RNAV (MOLGI6B)

- From MOLGI track 074° via CH739 to DOVEM
- Cross CH739 at or above FL160
- Cross DOVEM at or above FL150
- Track 058° via KAMGI, POPIS and CH407 to OBDOR
- Cross KAMGI at or above 13,000 ft
- Cross POPIS at or above 10,000 ft
- Cross CH407 at or above 7,000 ft
- Cross OBDOR at or above 4,000 ft
- Track 107° to ODISI at or above 3,000 ft, MAX IAS 210 kt

NOT TO SCALE



Minimum Sector Altitude 25 NM ARR

Changes from 1 FEB 18: ODISI to DIVSU segment removed. All Arrivals text amended.