

ELEV 123

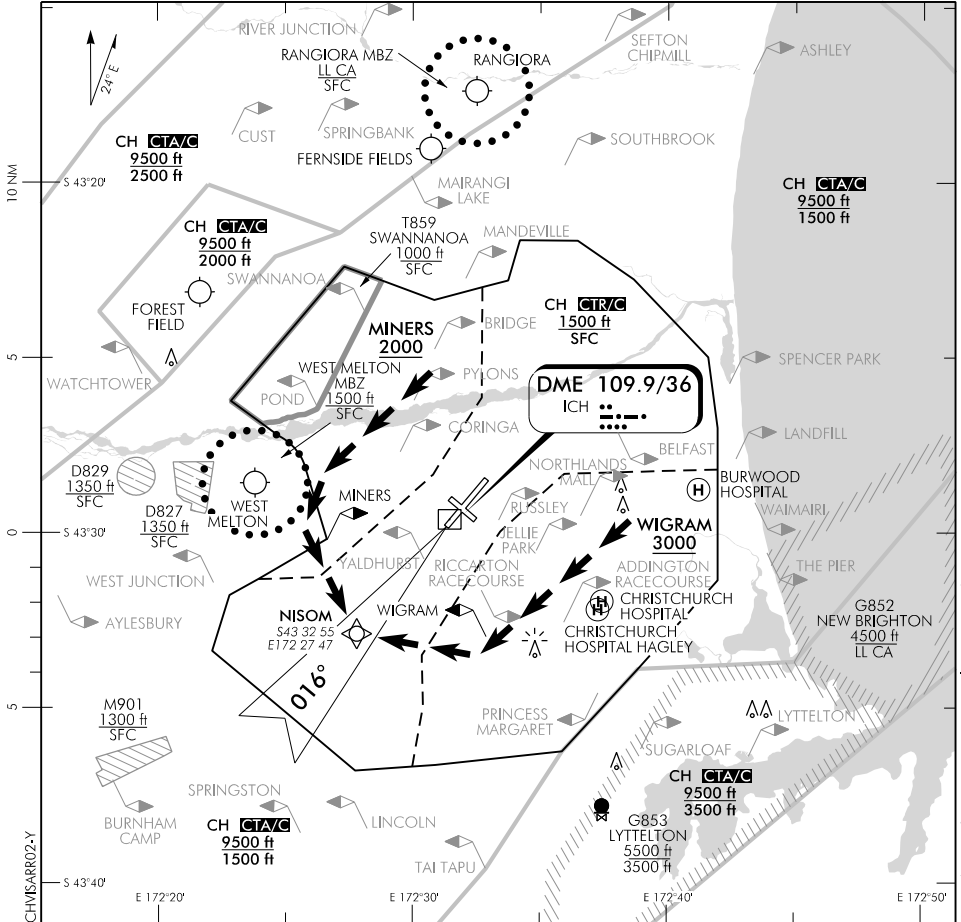
CAT A,B,C,D

CHRISTCHURCH

NZCH

VISUAL ARRIVALS RWY 02

CHRISTCHURCH APPROACH: 120.9 126.1 128.75 TOWER: 118.4 119.65 ATIS: 127.2



MINERS VISUAL ARRIVAL RWY 02

- Track west of MINERS VRP to NISOM or 4 ICH DME
- Not below 2000 ft until cleared by ATC
- MAX IAS 170 kt 6 NM from touchdown

WIGRAM VISUAL ARRIVAL RWY 02

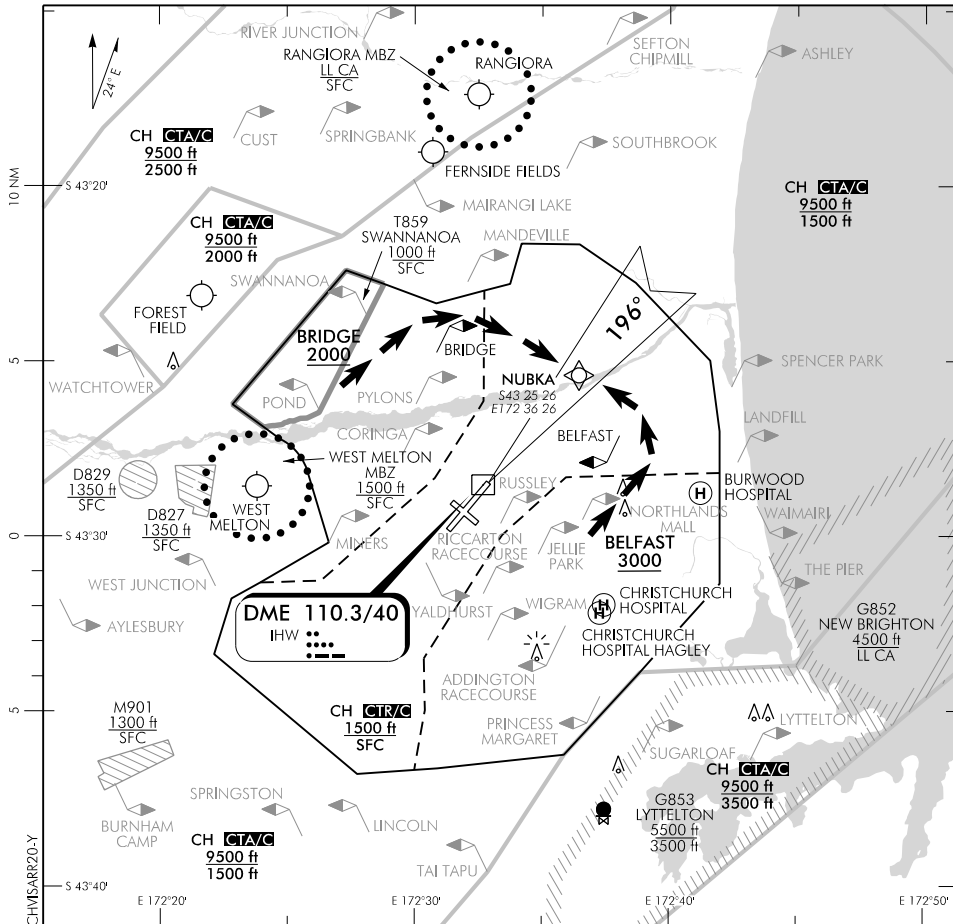
- Track east of WIGRAM VRP to NISOM or 4 ICH DME
- Not below 3000 ft until cleared by ATC
- MAX IAS 170 kt 6 NM from touchdown

Available by DAY only, aircraft must maintain continuous visual reference to the surface.

Altitude requirements may be amended by ATC
Meteorological Minima: (Day) 3000 – 8 (Night) NA

Effective: 26 MAR 20

Changes from 12 SEP 19: Arrival text removed.



Changes from 12 SEP 19: Arrival text removed.

BRIDGE VISUAL ARRIVAL RWY 20

- Track west of BRIDGE VRP to NUBKA or 4 IHW DME
- Not below 2000 ft until cleared by ATC
- MAX IAS 170 kt 6 NM from touchdown

BELFAST VISUAL ARRIVAL RWY 20

- Track east of BELFAST VRP to NUBKA or 4 IHW DME
- Not below 3000 ft until cleared by ATC
- MAX IAS 170 kt 6 NM from touchdown

Available by DAY only, aircraft must maintain continuous visual reference to the surface.

Altitude requirements may be amended by ATC
 Meteorological Minima: (Day) 3000 – 8 (Night) NA