

ELEV 123

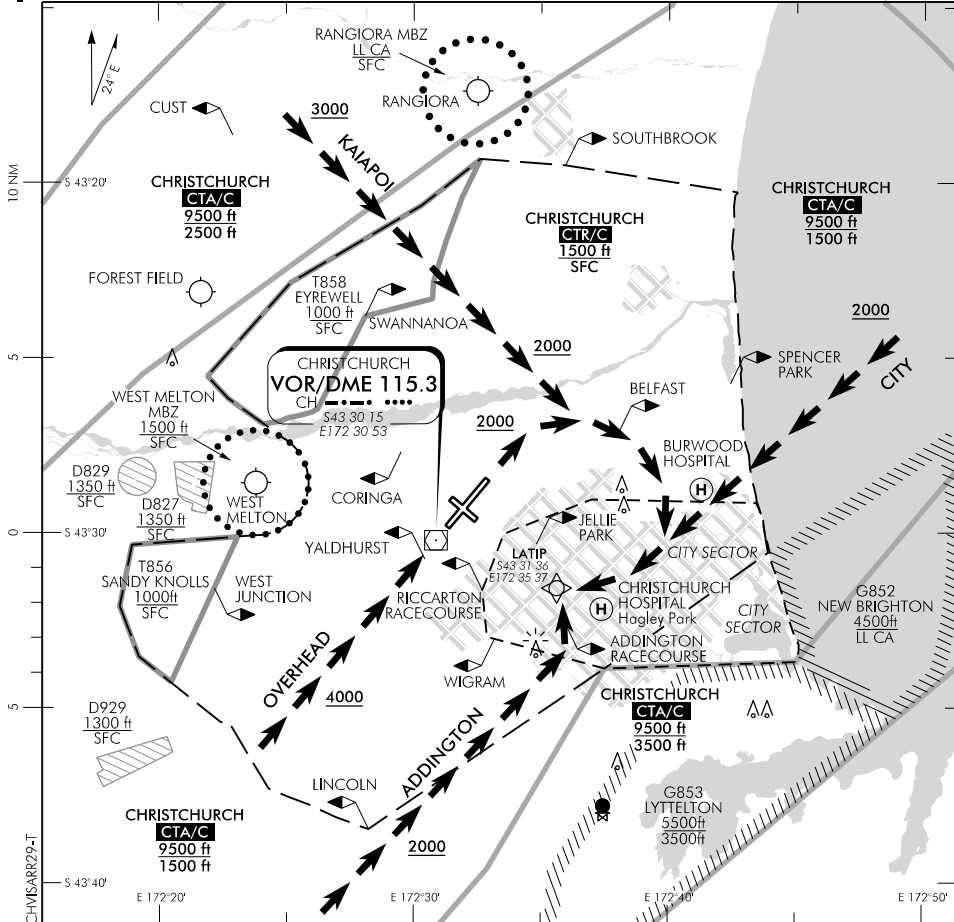
CAT A,B,C,D

**CHRISTCHURCH**

NZCH

**VISUAL ARRIVALS RWY 29**

CHRISTCHURCH APPROACH: 120.9 126.1 128.75 TOWER: 118.4 119.65 ATIS: 127.2



**KAIAPOI VISUAL ARRIVAL RWY 29**

- track north of a line Cust to Belfast, then east of a line Spencer Park to Hagley Park: CAUTION New Brighton GAA (G852);
- not below 3000 ft until east of a line Southbrook to Swannanoa;
- join final via LATIP (or 3 NM from touchdown), not below 2000 ft until cleared by ATC.

**CITY VISUAL ARRIVAL RWY 29**

- track east of a line Spencer Park to Hagley Park: CAUTION New Brighton GAA (G852);
- join final via LATIP (or 3 NM from touchdown), not below 2000 ft until cleared by ATC.

**OVERHEAD VISUAL ARRIVAL RWY 29**

- track via overhead NZCH RWY intersection then via Belfast and east of a line Spencer Park to Hagley Park: CAUTION New Brighton GAA (G852);
- unless cleared by ATC not below 4000 ft until north of RWY 20 threshold;
- join final via LATIP (or 3 NM from touchdown), not below 2000 ft until cleared by ATC.

**ADDINGTON VISUAL ARRIVAL RWY 29**

- track east of Lincoln to Hagley Park;
- join final via LATIP (or 3 NM from touchdown), not below 2000 ft until cleared by ATC.

Available by DAY only, aircraft must maintain continuous visual reference to the surface.

Altitude requirements may be amended by ATC

Meteorological Minima: (Day) 3000 – 8 (Night) NA

IFR aircraft on a visual approach or visual arrival procedure that are unable to land are to enter the aerodrome traffic circuit unless otherwise advised by ATC.

**Effective: 1 FEB 18**

Changes from 9 NOV 17: COM header ATC call sign.

