

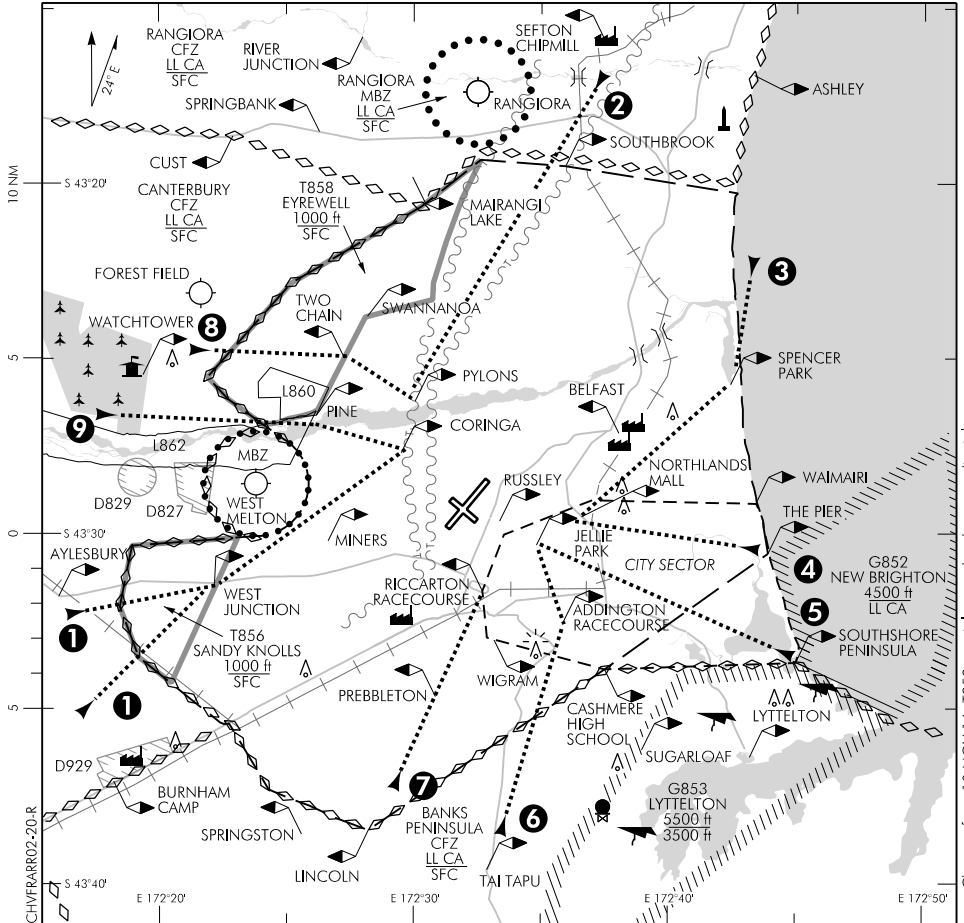
ELEV 123

NZCH

TOWER: 118.4 119.65

**CHRISTCHURCH****VFR ARRIVAL PROCEDURES RWY 02/20 (1)**

ATIS: 127.2



Changes from 10 NOV 16: T858 transit lane updated, sector editorial.

**REFER ALSO VISUAL NAVIGATION CHARTS**

**For VFR flights entering the Christchurch CTR/C and landing at Christchurch on RWY 02 or 20.**

Listen to ATIS for conditions at Christchurch Airport.

**If a clearance is not available remain outside Christchurch CTR/C.**

Altitude instructions may be varied by the Tower. More direct plain language instructions may be issued on request, or in periods of low traffic. **If circuit joining instructions have not been issued - hold as specified.**

Aircraft entering CTR from the west - caution B875 West Melton, VFR transit lanes T858 (Eyrewell) and T856 (Sandy Knolls), and low flying zones L860 and L862.

Effective: 9 NOV 17

© Civil Aviation Authority

**CHRISTCHURCH****VFR ARRIVAL PROCEDURES RWY 02/20 (1)**

ELEV 123

NZCH

TOWER: 118.4 119.65

**CHRISTCHURCH****VFR ARRIVAL PROCEDURES RWY 02/20 (2)**

ATIS: 127.2

Listen to ATIS for conditions at Christchurch Airport.

**Communications Failure**

Outside Christchurch CTR/C — remain clear and proceed to an alternative aerodrome.

**Squawk 7600.** Report arrival to Christchurch Tower.

Within Christchurch CTR/C — if joining instructions have been issued, follow assigned clearance, **Squawk 7600**, look for light signals.

If joining instructions have not been issued, leave CTR/C via reversal of assigned arrival procedure or instructions, **Squawk 7600**. Proceed to an alternative aerodrome and report arrival to Christchurch Tower.

**REFER TO DIAGRAM ON PREVIOUS PAGE AND VNC.**

- |   |                   |  |
|---|-------------------|--|
| ❶ | West Junction Arr | Track to West Junction, <b>west</b> of a line Burnham Camp to West Junction, thence direct to Coringa, 1500 ft or below. Report and hold <b>west</b> of Coringa.<br>If joining for grass RWY 02/20 descend to 1000 ft or below before passing West Melton MBZ. |
| ❷ | Southbrook Arr    | Track <b>west</b> of a line Southbrook to Pylons, 1500 ft or below. Report and hold <b>west</b> of Pylons.<br>If joining for grass RWY 02/20 descend to 1000 ft or below before crossing Pylons.   |
| ❸ | Spencer Park Arr  | Enter CTR at Spencer Park, track direct to Northlands Mall 1500 ft or below. Report and hold <b>east</b> of Northlands Mall.   |
| ❹ | Pier Arr          | Track from The Pier to Northlands Mall 1500 ft or below. Report and hold <b>east</b> of Northlands Mall.   |
| ❺ | Estuary Arr       | Track from Southshore to Jellie Park 1500 ft or below. Report and hold <b>east</b> of Jellie Park.   |
| ❻ | Addington Arr     | Track <b>east</b> of a line Tai Tapu to Addington Racecourse thence to Jellie Park at 1500 ft or below. Report and hold <b>east</b> of Jellie Park.  |
| ❼ | Riccarton Arr     | Track via Lincoln direct to Riccarton Racecourse at 1500 ft or below. Report and hold <b>east</b> of Riccarton Racecourse.   |
| ❽ | Two Chain Arr     | Track via Two Chain direct to Pylons, 1500 ft or below. Report and hold <b>west</b> of Pylons.<br>If joining for grass RWY 20 descend to 1000 ft or below before passing Pylons.   |
| ❾ | Pine Arr          | Track via Pine direct to Coringa, 1500 ft or below. Report and hold <b>west</b> of Coringa.<br>If joining for grass RWY 02 descend to 1000 ft or below before passing Coringa.   |