

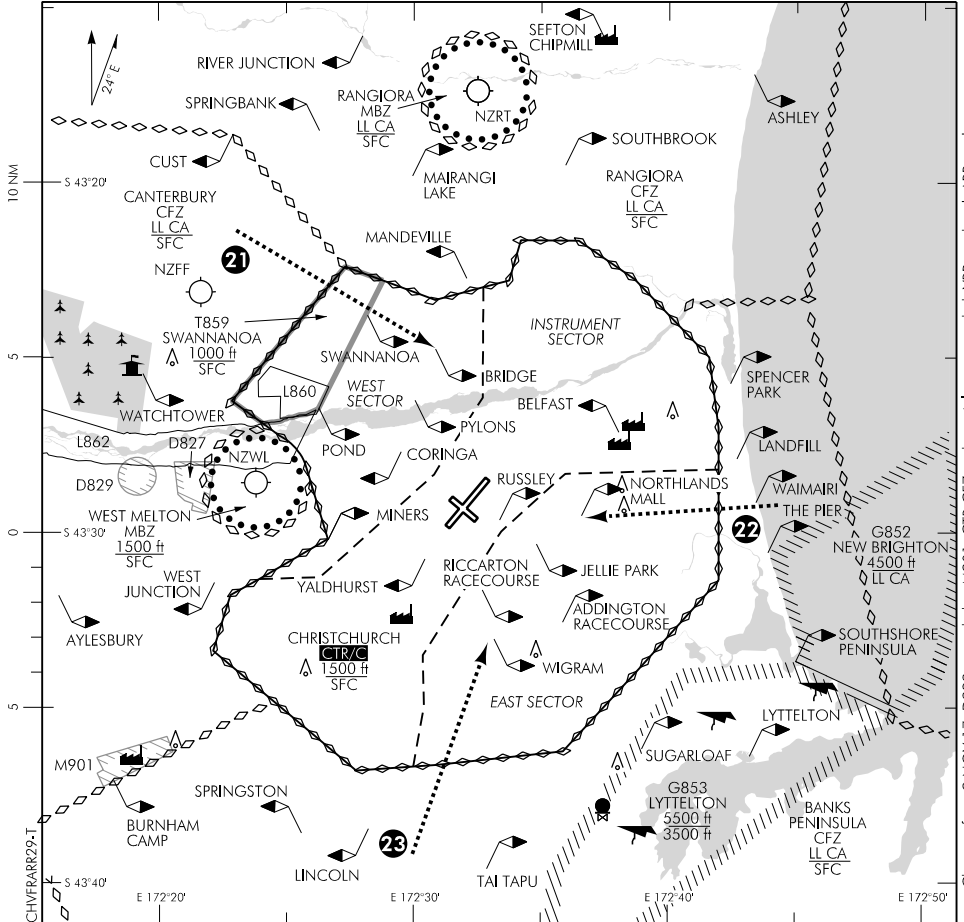
ELEV 123

NZCH

TOWER: 118.4 119.65

CHRISTCHURCH**VFR ARRIVAL PROCEDURES RWY 29 (1)**

ATIS: 127.2

**REFER ALSO VISUAL NAVIGATION CHARTS**

For VFR flights entering the Christchurch CTR/C and landing at Christchurch on RWY 29.

Listen to ATIS for conditions at Christchurch Airport.

If a clearance is not available remain outside Christchurch CTR/C.

Altitude instructions may be varied by the Tower. More direct plain language instructions may be issued on request, or in periods of low traffic. **If circuit joining instructions have not been issued - hold as specified.**

Aircraft entering CTR from the west - caution B875 West Melton, VFR transit lane T859 (Swannanoa) and low flying zones L860 and L862.

Effective: 8 NOV 18

© Civil Aviation Authority

CHRISTCHURCH
VFR ARRIVAL PROCEDURES RWY 29 (1)

ELEV 123

NZCH

TOWER: 118.4 119.65

CHRISTCHURCH**VFR ARRIVAL PROCEDURES RWY 29 (2)**

ATIS: 127.2

REFER TO DIAGRAM ON PREVIOUS PAGE AND VNC.**Arrival Procedures*****If a clearance is not available remain outside Christchurch CTR/C.***

Listen to ATIS for conditions at Christchurch Airport.

Altitude instructions may be varied by the Tower. More direct plain language instructions may be issued on request, or in periods of low traffic. **If circuit joining instructions have not been issued — hold as specified.**

Aircraft entering CTR from the west — caution B875 West Melton, VFR transit lanes T859 (Swannanoa) and low flying zones L860 and L862.

- | | |
|---------------------|---|
| ① 29 Bridge Arr | Track via north of the Eyre River to Bridge 1500 ft or below. Report and hold north of Bridge. |
| ② 29 Northlands Arr | Track from Waimairi direct to Northlands Mall 1500 ft or below. Report and hold north east of Northlands Mall. |
| ③ 29 Wigram Arr | Track on a line from the eastern edge of Lincoln township to Wigram 1500 ft or below. Report and hold at Wigram 1500 ft or below. |