

ELEV 123

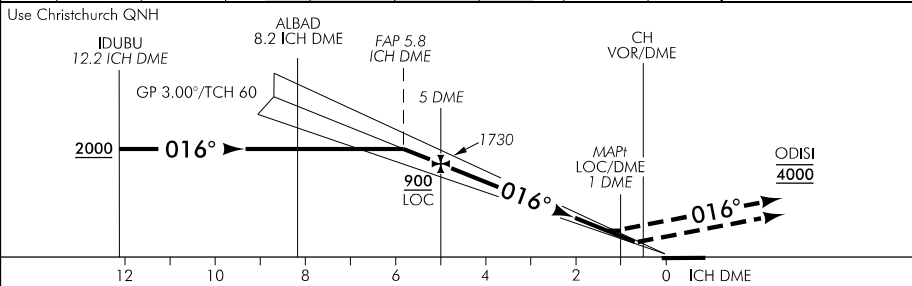
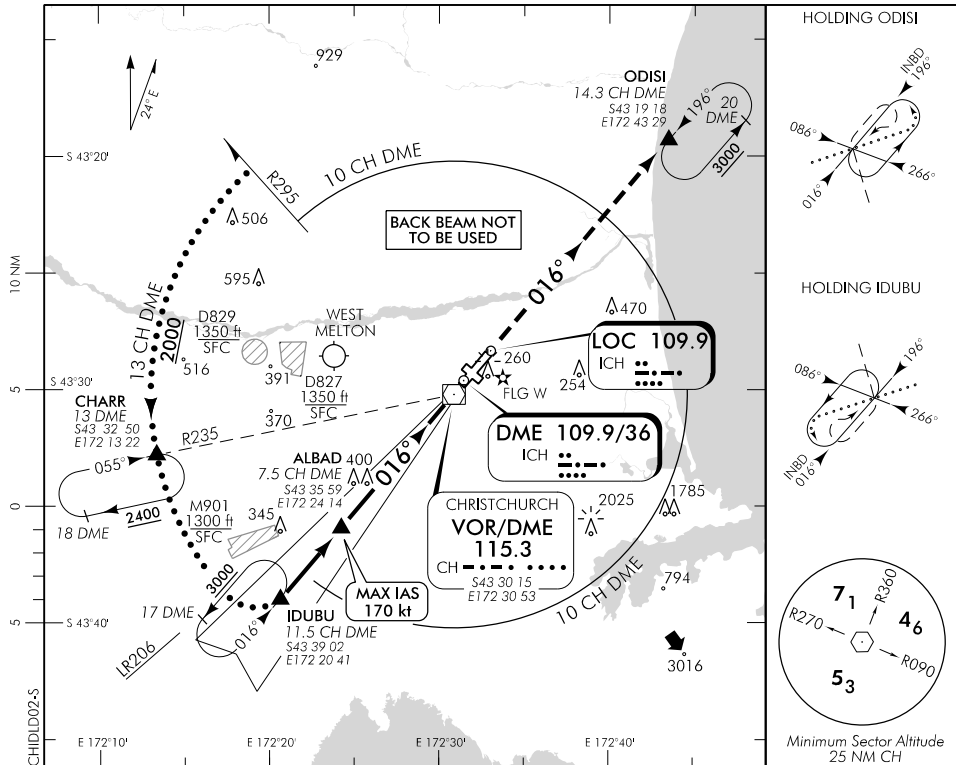
CAT A,B,C,D

**CHRISTCHURCH**

RWY 02 THR ELEV 123

**ILS/DME or LOC/DME RWY 02**

CHRISTCHURCH APPROACH: 120.9 126.1 128.75 TOWER: 118.4 119.65 ATIS: 127.2



**MISSED APCH:** MAX IAS 185 kt. Track 016° to ODISI 4000

ICH DME DIST	10	9	8	7	6	5	4	3	2	1.3	0.7
Advisory Altitude 3°	3380	3050	2710	2380	2050	1730	1400	1080	750	MDA	DA
Category	A		B			C		D/D <sub>L</sub>			
ILS/DME (CAT 1)	323(200) – 800 or RVR 550										
ILS/DME LH ALS U/S	373(250) – 1200 or RVR 800										
LOC/DME	520(397) – 1500										
Circling	650(527) – 1900		650(527) – 2800			*740(617) – 3700		*790(667) – 4600			

\* CAT C/D circling airspace containment not assured.

**Effective: 31 JAN 19**

© Civil Aviation Authority

**CHRISTCHURCH**  
**ILS/DME or LOC/DME RWY 02**

Changes from 29 MAR 18: D929 amended to M901, CAT C/D circling note added, DME channel added.

ELEV 123

CAT A,B,C,D

# CHRISTCHURCH

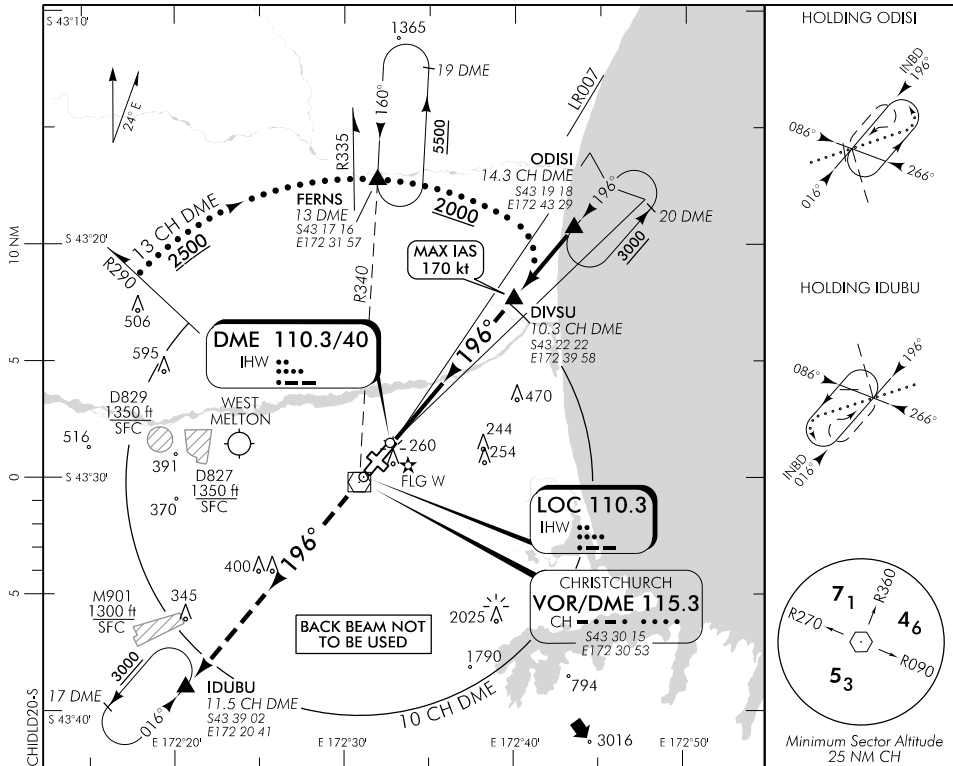
RWY 20 THR ELEV 93

ILS/DME or LOC/DME RWY 20

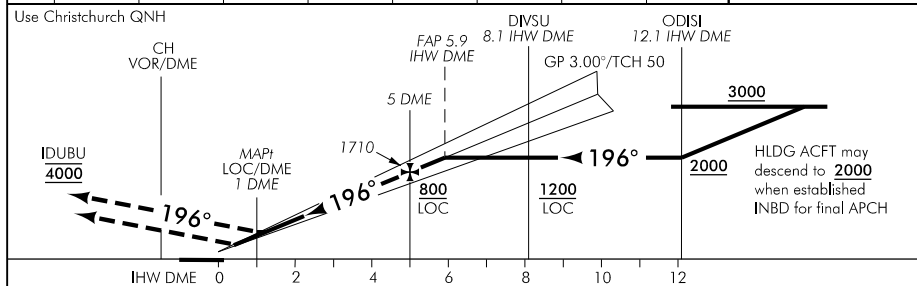
CHRISTCHURCH APPROACH: 120.9 126.1 128.75

TOWER: 118.4 119.65

ATIS: 127.2



Changes from 29 MAR 18: D929 amended to M901, CAT C/D circling note added, DME channel added.



**MISSED APCH:** MAX IAS 185 kt. Track 196° to IDUBU **4000**

IHW DME DIST	0.6	1	1.1	2	3	4	5	6	7	8	9	10
Advisory Altitude 3"	DA	410	MDA	730	1060	1380	1710	2040	2370	2700	3030	3370
Category	A			B			C			D/D <sub>L</sub>		
ILS/DME (CAT I)	293(200) – 800 or RVR 550											
ILS/DME LH ALS U/S	343(250) – 1200 or RVR 800											
LOC/DME	450(357) – 1500											
Circling	650(527) – 1900			650(527) – 2800			*740(617) – 3700			*790(667) – 4600		

\* CAT C/D circling airspace containment not assured.

**Effective: 31 JAN 19**