

ELEV 123

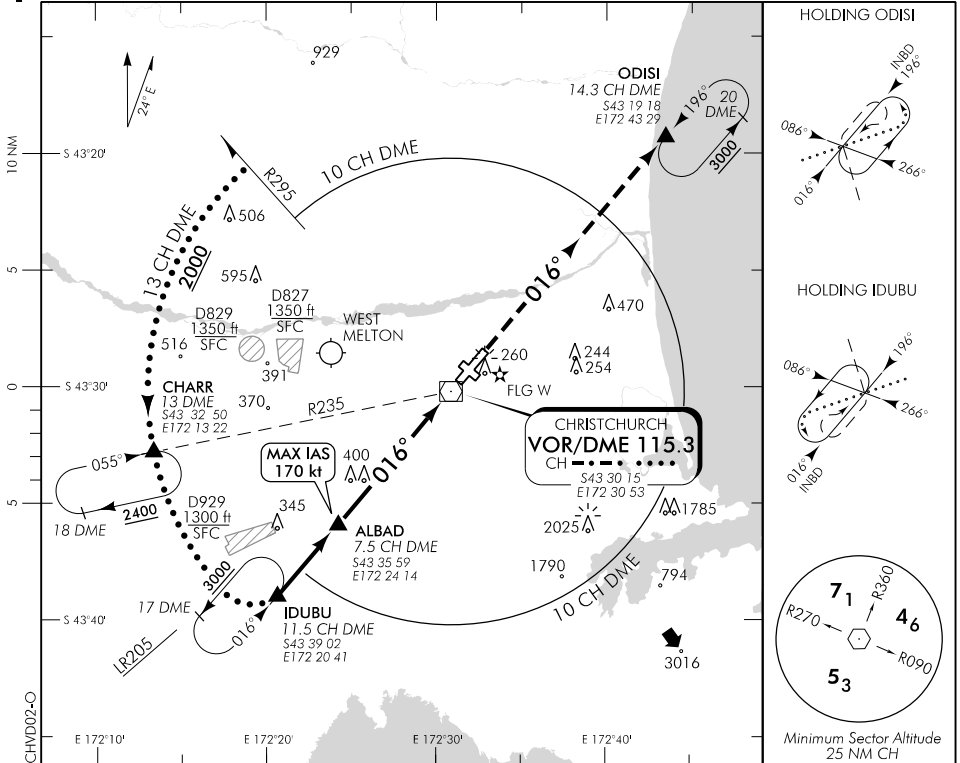
CAT A,B,C,D

CHRISTCHURCH

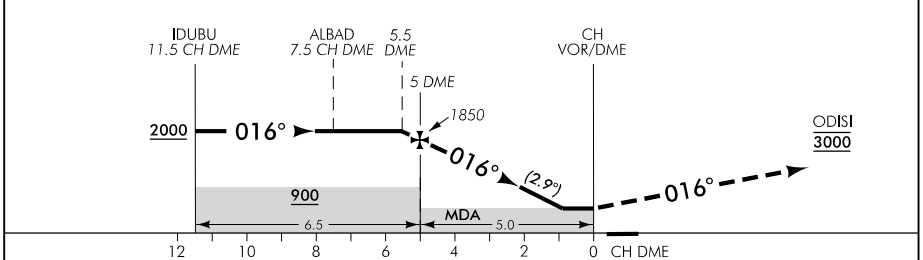
RWY 02 THR ELEV 123

VOR/DME RWY 02

CHRISTCHURCH APPROACH: 120.9 126.1 128.75 TOWER: 118.4 119.65 ATIS: 127.2



Use Christchurch QNH



MISSED APCH: MAX IAS 185 kt. Track 016° to ODISI 3000

CH DME DIST	10	9	8	7	6	5	4	3	2	1	0.9	MAPt
Advisory Altitude 5%	3350	3050	2750	2450	2150	1850	1550	1250	950	650	MDA	MDA
Category	A			B			C			D		
VOR/DME	620(497) - 1500						620(497) - 1900					
Circling	650(527) - 1900			650(527) - 2800			740(617) - 3700			790(667) - 4600		

Effective: 1 FEB 18

CHRISTCHURCH
VOR/DME RWY 02

Changes from 30 MAR 17: COM header ATC collision.

ELEV 123

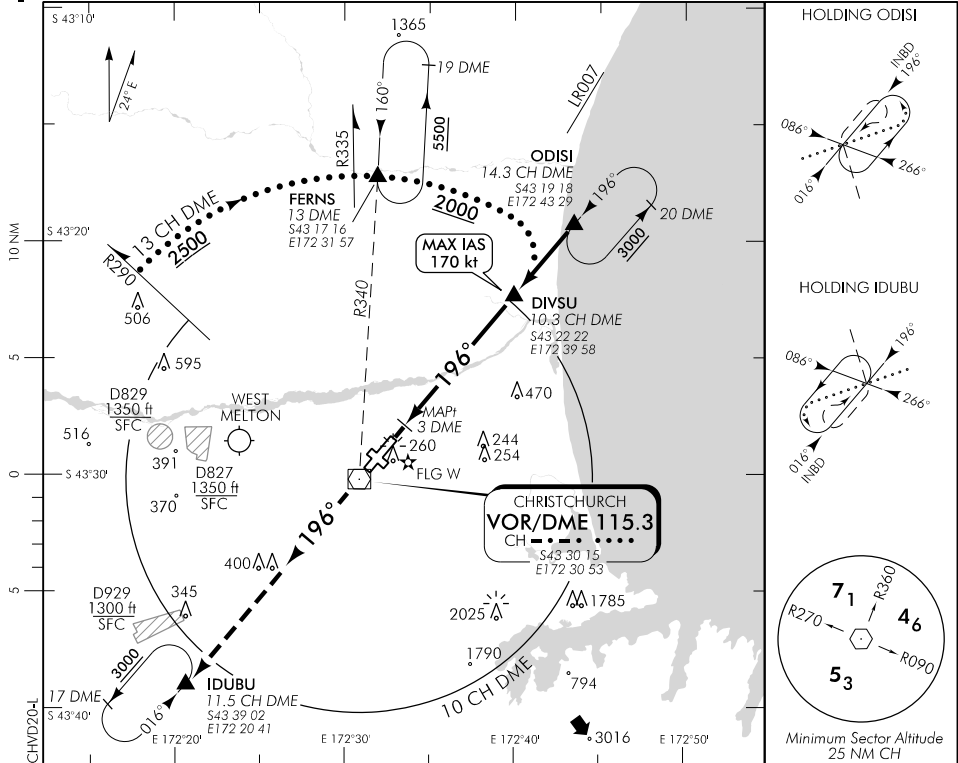
CAT A,B,C,D

CHRISTCHURCH

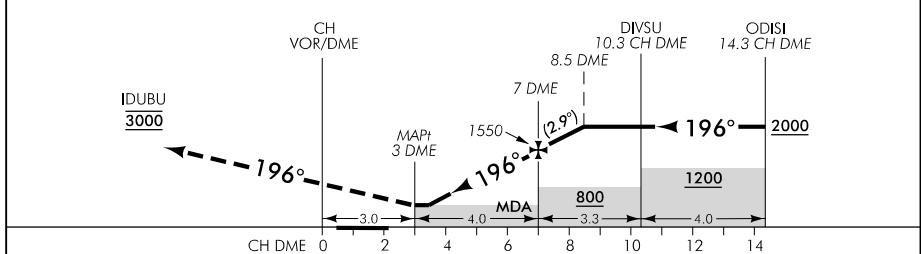
RWY 20 THR ELEV 93

VOR/DME RWY 20

CHRISTCHURCH APPROACH: 120.9 126.1 128.75 TOWER: 118.4 119.65 ATIS: 127.2



Use Christchurch QNH



MISSED APCH: MAX IAS 185 kt. Track 196° to IDUBU 3000

CH DME DIST	MAPt 3	3.4	4	5	6	7	8	9	10
Advisory Altitude 5%	MDA	MDA	650	950	1250	1550	1850	2150	2450
Category	A		B			C		D	
VOR/DME	480(387) - 1500								
Circling	650(527) - 1900		650(527) - 2800			740(617) - 3700		790(667) - 4600	

Changes from 30 MAR 17: COM header ATC collision.

Effective: 1 FEB 18