

ELEV 123

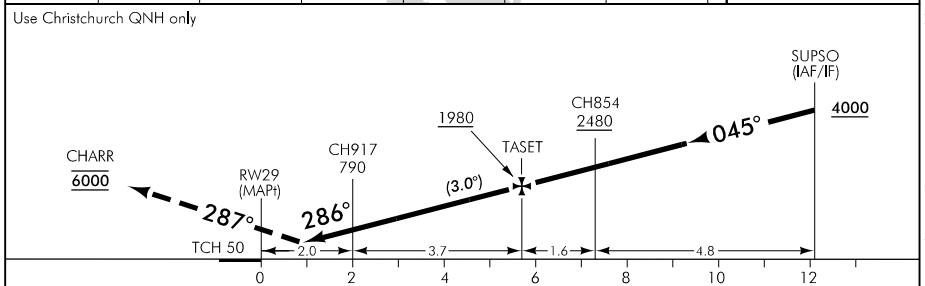
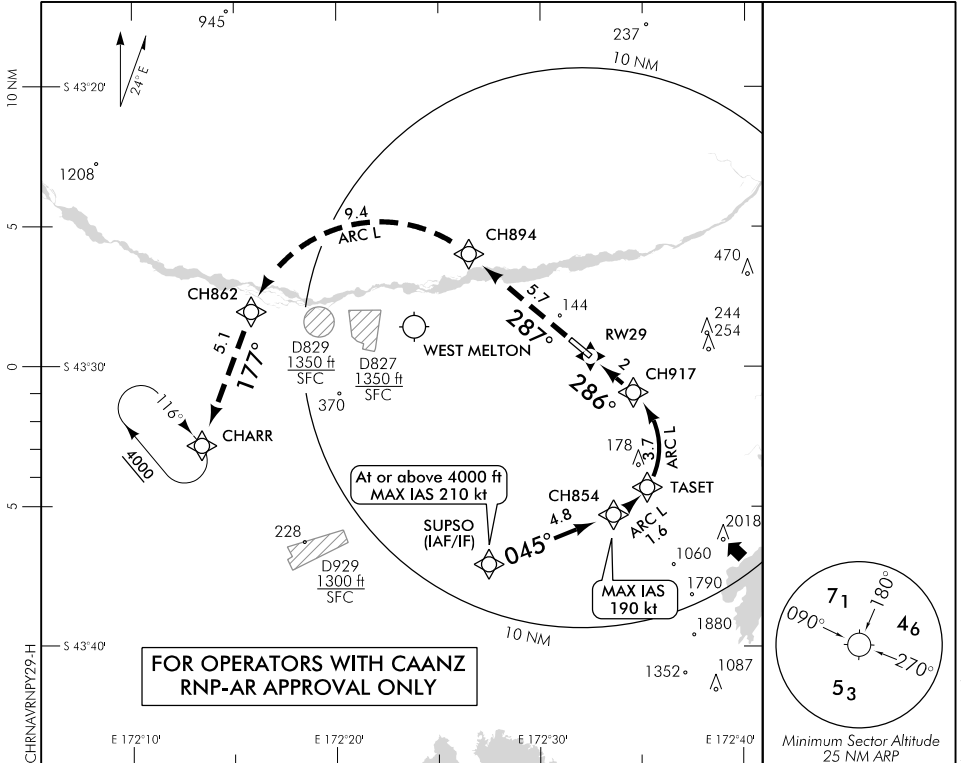
CAT B,C,D

CHRISTCHURCH

RWY 29 THR ELEV 95

RNAV (RNP) Y RWY 29

CHRISTCHURCH APPROACH: 120.9 126.1 128.75 TOWER: 118.4 119.65 ATIS: 127.2



MISSED APCH: MAX IAS 185 kt. Follow RNP track to CHARR 6000

Category	A	B	C	D
RNP 0.30	NA		430(335) – 1600	
1. Procedure NA when AD temperature is below -10°C or above 47°C 2. RF required 3. RNP 0.3 initial and intermediate segments, RNP 1.0 missed approach segment				

Effective: 24 MAY 18

CHRISTCHURCH
RNAV (RNP) Y RWY 29

Changes from 1 FEB 18: CAT B added to approach category.

ELEV 123

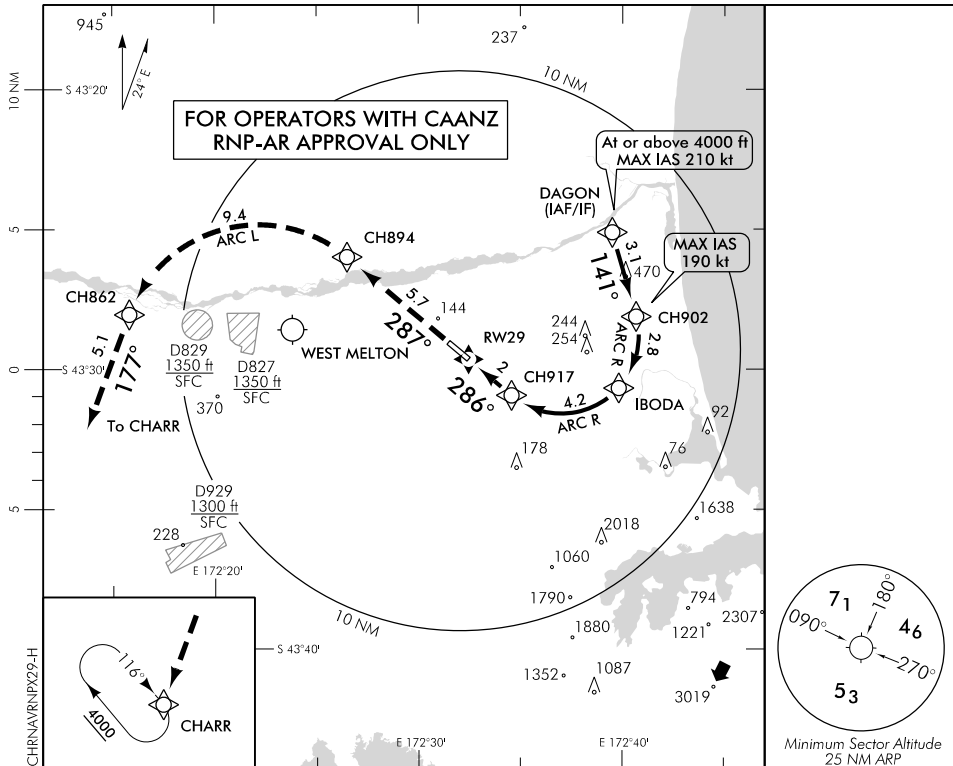
CAT B,C,D

CHRISTCHURCH

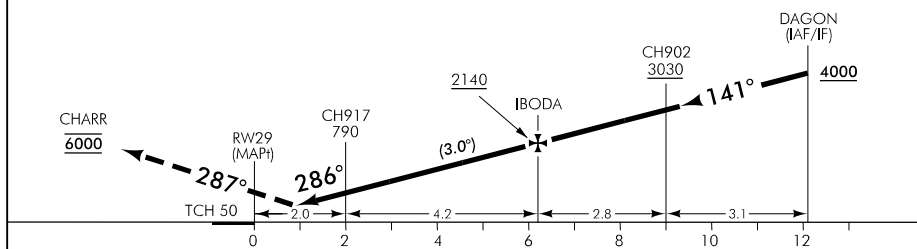
RWY 29 THR ELEV 95

RNAV (RNP) X RWY 29

CHRISTCHURCH APPROACH: 120.9 126.1 128.75 TOWER: 118.4 119.65 ATIS: 127.2



Use Christchurch QNH only



MISSED APCH: MAX IAS 185 kt. Follow RNP track to CHARR 6000

Category	A	B	C	D
RNP 0.30	NA		430(335) – 1600	

1. Procedure NA when AD temperature is below -10°C or above 47°C
2. RF required
3. RNP 0.3 initial and intermediate segments, RNP 1.0 missed approach segment

Changes from 1 FEB 18: CAT B added to approach category.

Effective: 24 MAY 18

CHRISTCHURCH
RNAV (RNP) X RWY 29