



ELEV 123

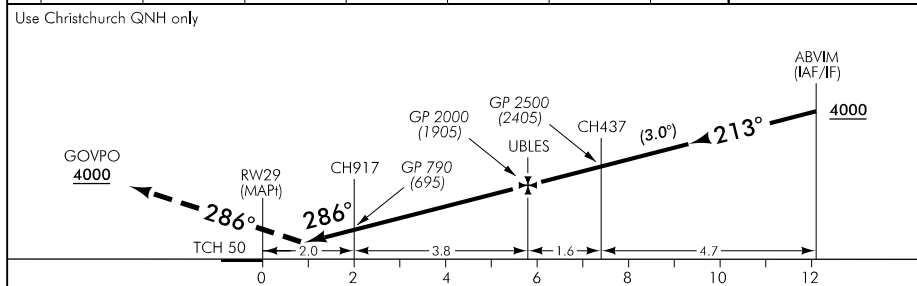
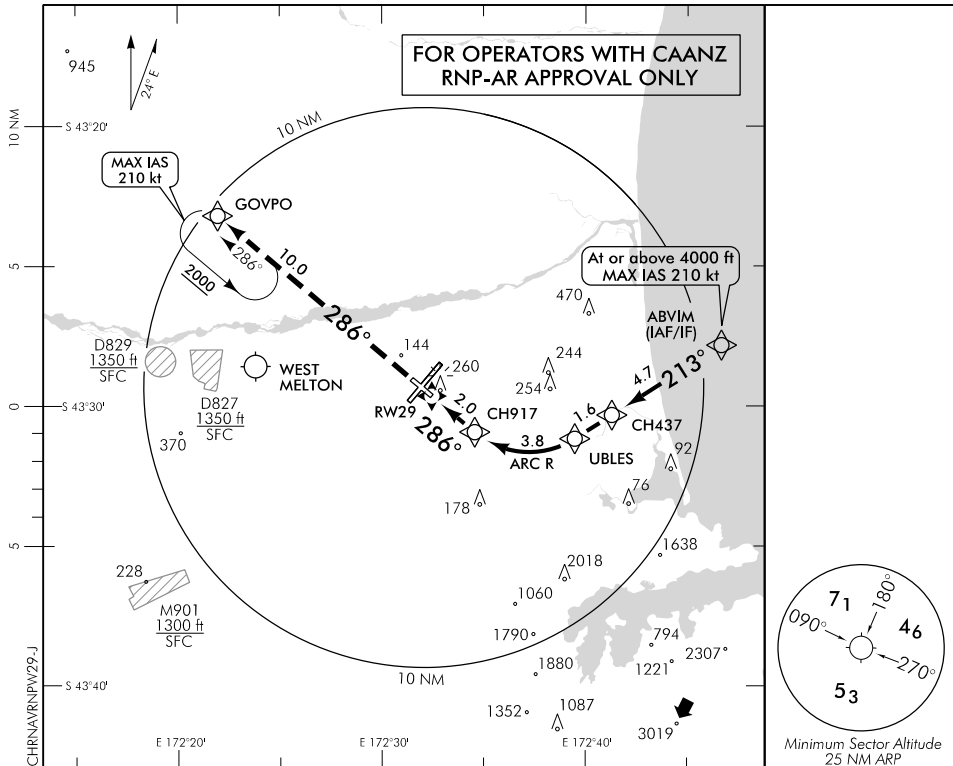
CAT B,C,D

# CHRISTCHURCH

RWY 29 THR ELEV 95

RNAV (RNP) W RWY 29

CHRISTCHURCH APPROACH: 120.9 126.1 128.75 TOWER: 118.4 119.65 ATIS: 127.2



MISSED APCH: MAX IAS 210 kt. Track 286° to GOVPO 4000

Category	A	B	C	D
RNP 0.30	NA		430(335) – 1600	
1. Procedure NA when AD temperature is below -10°C or above 47°C 2. RF required 3. RNP 0.3 initial and intermediate segments, RNP 1.0 missed approach segment				

Changes from 31 JAN 19: Procedure reviewed.

**Effective: 26 MAR 20**