

ELEV 123

CAT A,B,C,D

CHRISTCHURCH

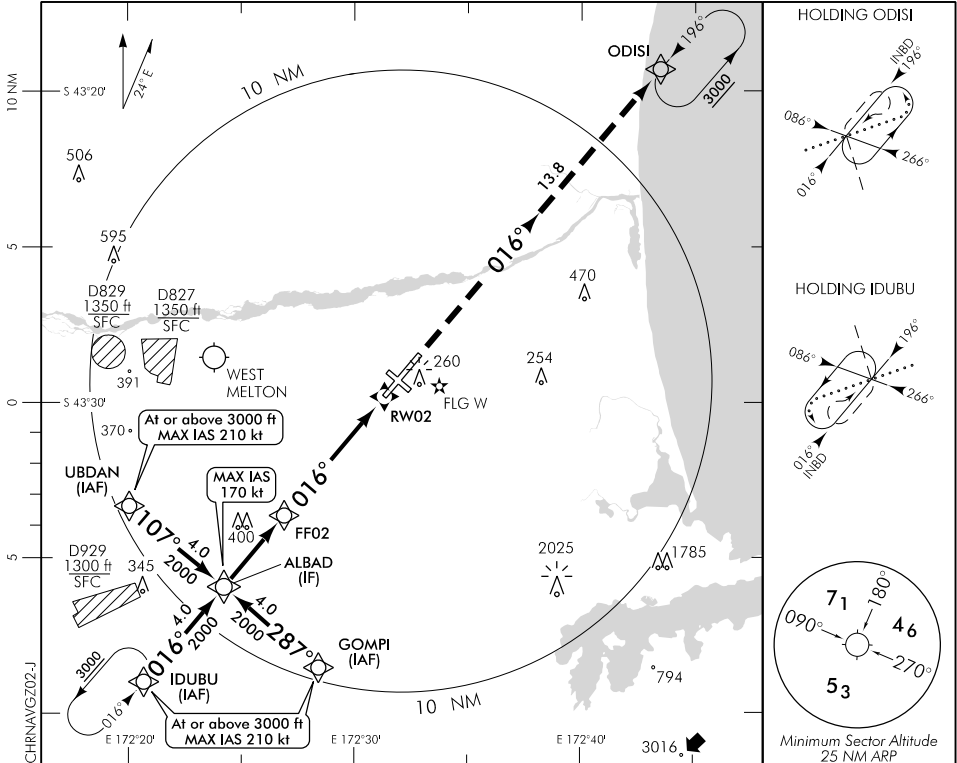
RWY 02 THR ELEV 123

RNAV (GNSS) Z RWY 02

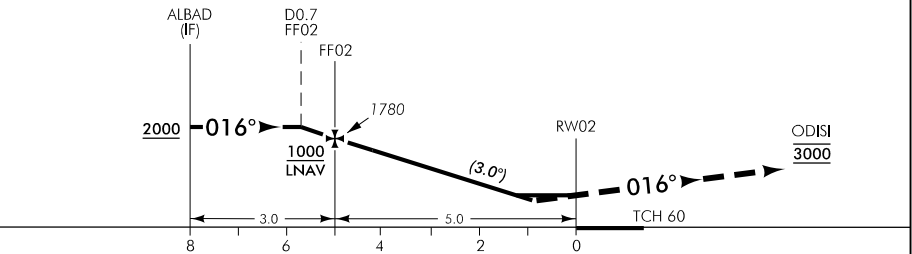
CONTROL: 120.9 126.1 128.75

TOWER: 118.4 119.65

ATIS: 127.2



Use Christchurch QNH



MISSED APCH: MAX IAS 185 kt. Track 016° to ODISI 3000

DISTANCE to WPT	ALBAD	2	1	FF02	4	3	2	1.2	0.9	RW02
Advisory Altitude 3°	2740	2420	2100	1780	1460	1140	820	MDA	MDA/DA	MDA
Category	A			B		C		D		
LNAV/VNAV*	450(327) - 1500									
LNAV	550(427) - 1500									
Circling	650(527) - 1900		650(527) - 2800			740(617) - 3700		790(667) - 4600		

* Valid to AD temperature -10°C. Use of remote QNH NA

Effective: 30 MAR 17

Changes from 26 MAY 16 - Obstacle elevation updated.

ELEV 123

CAT A,B,C,D

CHRISTCHURCH

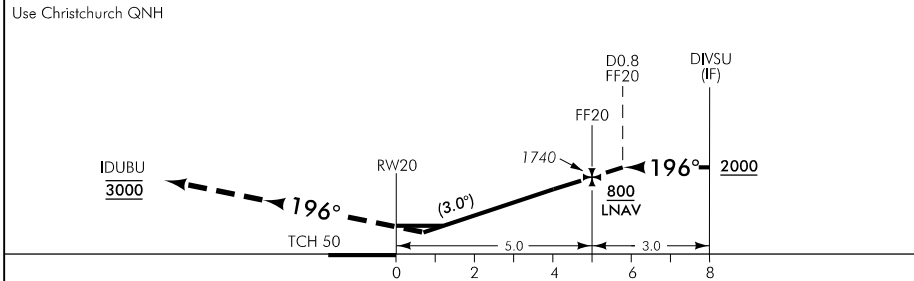
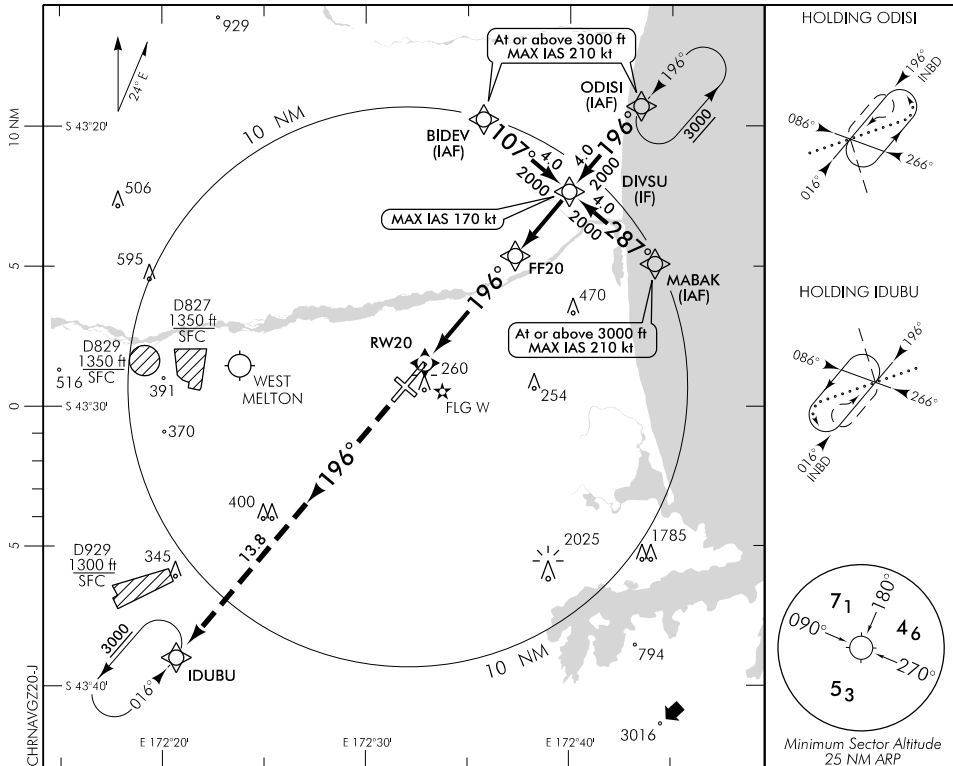
RWY 20 THR ELEV 93

RNAV (GNSS) Z RWY 20

CONTROL: 120.9 126.1 128.75

TOWER: 118.4 119.65

ATIS: 127.2



DISTANCE TO WPT	RWY20	0.7	1.2	2	3	4	FF20	1	2	DIVSU
Advisory Altitude 3"	MDA	DA/MDA	MDA	780	1100	1420	1740	2060	2380	2700
Category	A		B			C		D		
LNAV/VNAV*	380(287) - 1500									
LNAV	510(417) - 1500									
Circling	650(527) - 1900		650(527) - 2800			740(617) - 3700		790(667) - 4600		

* Valid to AD temperature -10°C. Use of remote QNH NA

Changes from 26 MAY 16: Minima, obstacle elevation updated.

Effective: 30 MAR 17