

ELEV 123

CAT B,C,D

**CHRISTCHURCH**

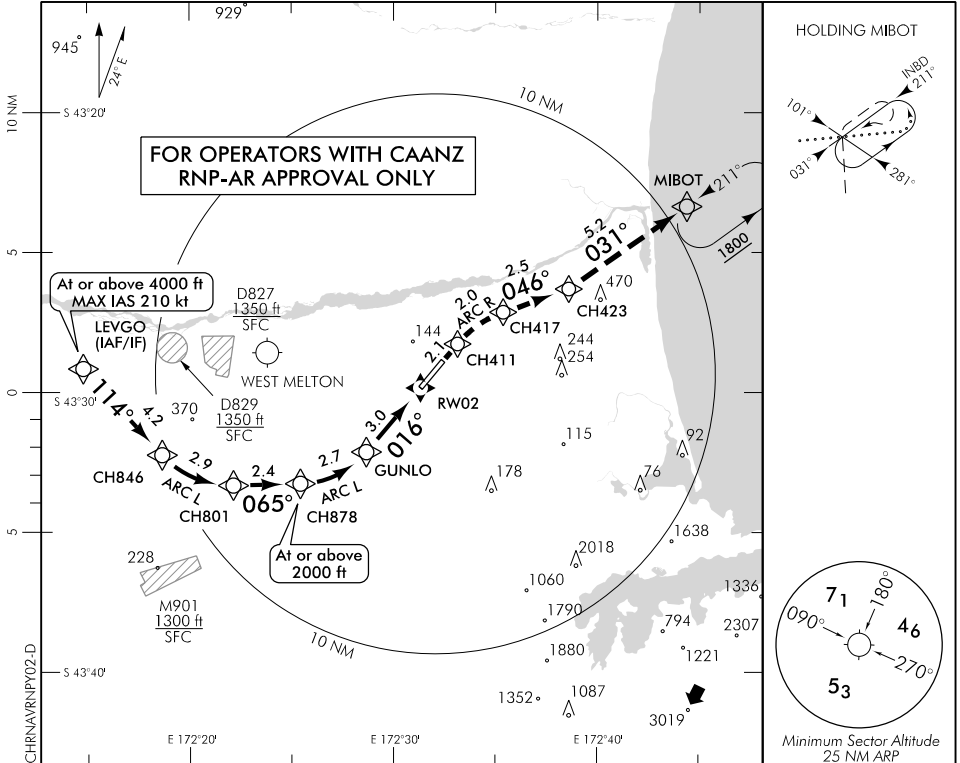
RWY 02 THR ELEV 123

**RNAV (RNP) Y RWY 02**

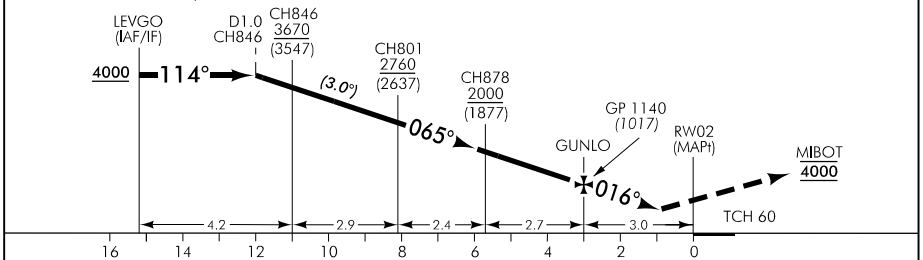
CHRISTCHURCH APPROACH: 120.9 126.1 128.75

TOWER: 118.4 119.65

ATIS: 127.2



Use Christchurch QNH only



**MISSED APCH:** MAX IAS 210 kt. Track via the RNAV (RNP) Missed Approach to MIBOT **4000**

Category	A	B	C	D
RNP 0.30	NA		530(407) – 1500	
1. Procedure NA when AD temperature is below -10°C or above 47°C 2. RF required 3. RNP 0.3 initial and intermediate segments, RNP 1.0 missed approach segment				

**Effective: 26 MAR 20**

Changes from 24 MAY 18: Minima, D929 amended to M901, missed APCH track to MIBOT and text, GUNLO to RW02 track.

ELEV 123

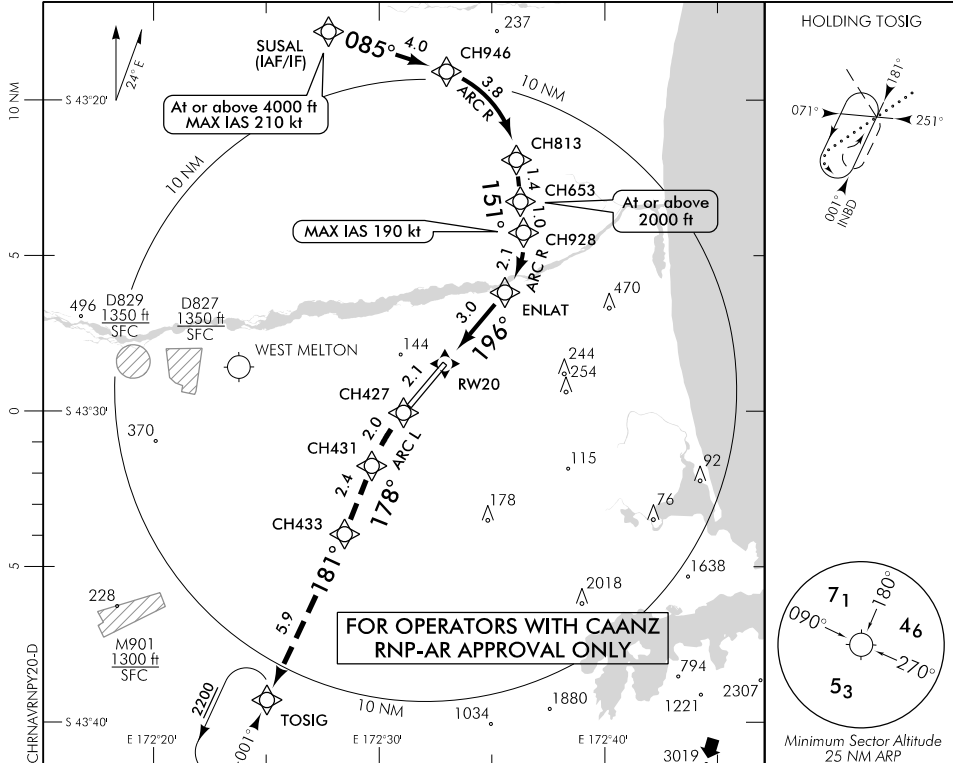
CAT B,C,D

**CHRISTCHURCH**

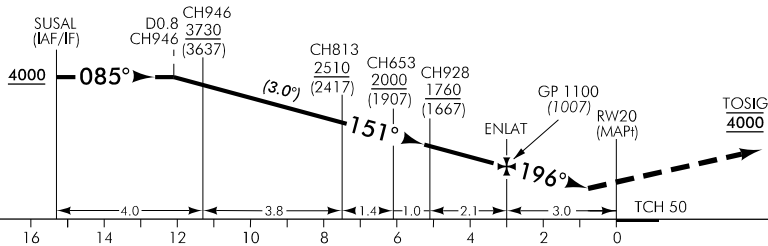
RWY 20 THR ELEV 93

**RNAV (RNP) Y RWY 20**

CHRISTCHURCH APPROACH: 120.9 126.1 128.75 TOWER: 118.4 119.65 ATIS: 127.2



Use Christchurch QNH only



MISSED APCH: MAX IAS 210 kt. Track via the RNAV (RNP) Missed Approach to TOSIG 4000

Category	A	B	C	D
RNP 0.30	NA		500(407) - 1500	

1. Procedure NA when AD temperature is below -10°C or above 47°C
2. RF required
3. RNP 0.3 initial and intermediate segments, RNP 1.0 missed approach segment

Changes from 24 MAY 18: Minima, D929 amended to M901, missed APCH track to TOSIG and text, ENLAT to RWY20 track.

**Effective: 26 MAR 20**