



ELEV 123

CAT B,C,D

CHRISTCHURCH

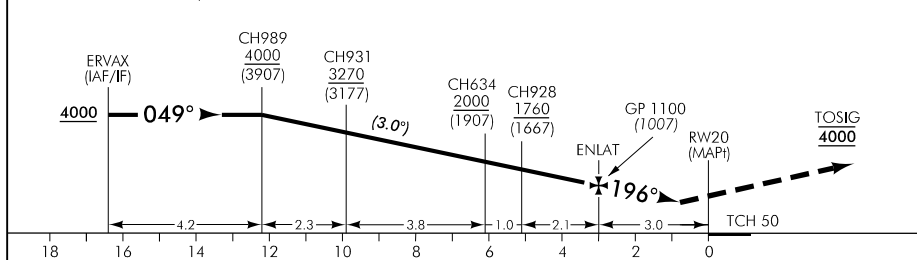
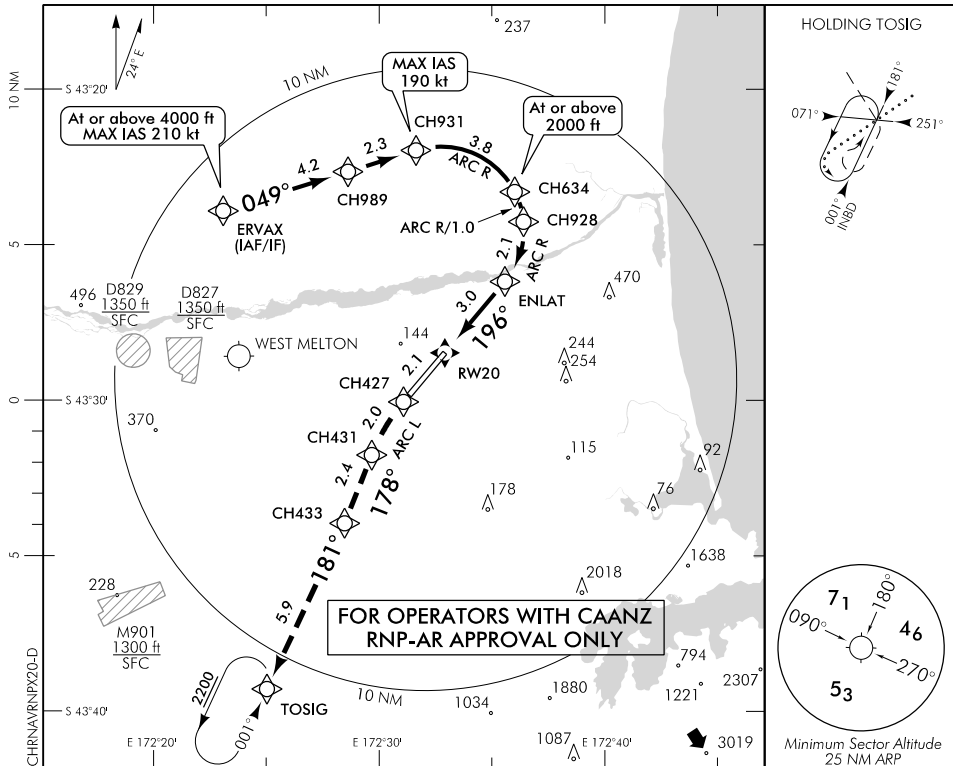
RWY 20 THR ELEV 93

RNAV (RNP) X RWY 20

CHRISTCHURCH APPROACH: 120.9 126.1 128.75

TOWER: 118.4 119.65

ATIS: 127.2



Category	A	B	C	D
RNP 0.30	NA		500(407) - 1500	

1. Procedure NA when AD temperature is below -10°C or above 47°C
 2. RF required
 3. RNP 0.3 initial and intermediate segments, RNP 1.0 missed approach segment

Changes from 24 MAY 18: Minima, missed APCH track to TOSIG and text, ENLAT to RW20 track.

Effective: 26 MAR 20