

ELEV 123

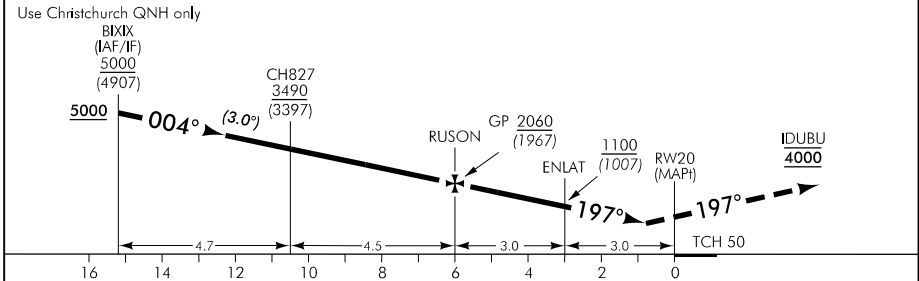
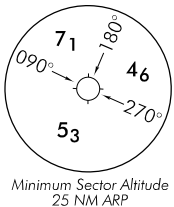
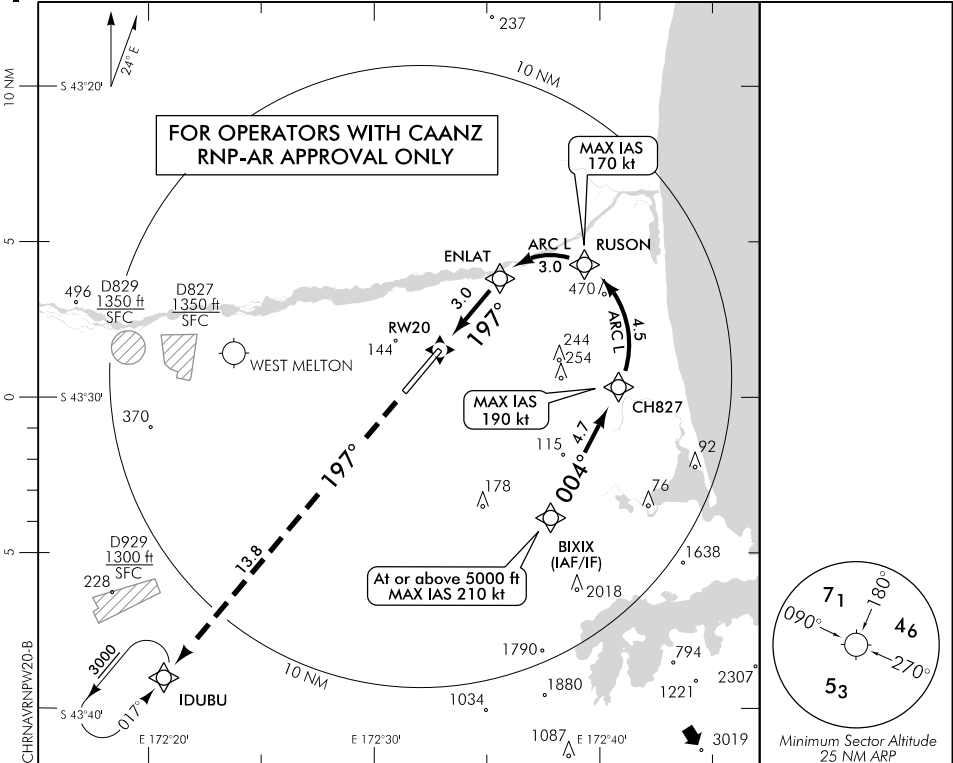
CAT C,D

CHRISTCHURCH

RWY 20 THR ELEV 93

RNAV (RNP) W RWY 20

CHRISTCHURCH APPROACH: 120.9 126.1 128.75 TOWER: 118.4 119.65 ATIS: 127.2



MISSED APCH: MAX IAS 185 kt. Track 197° to IDUBU 4000

Category	A	B	C	D
RNP 0.30	NA		400(307) – 1500	

1. Procedure NA when AD temperature is below -10°C or above 47°C
2. RF required
3. RNP 0.3 initial and intermediate segments, RNP 1.0 missed approach segment

Changes from 9 NOV 17: COM header ATC collsign, plan view restriction at RUSON updated.

Effective: 1 FEB 18