

ELEV 123

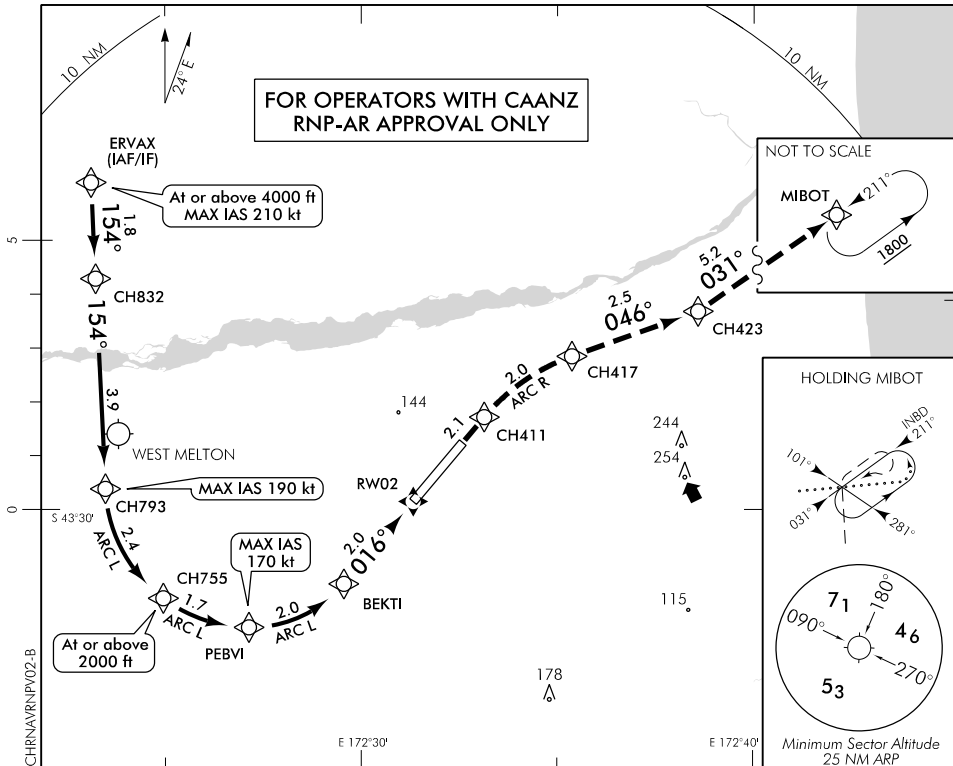
CAT B,C,D

CHRISTCHURCH

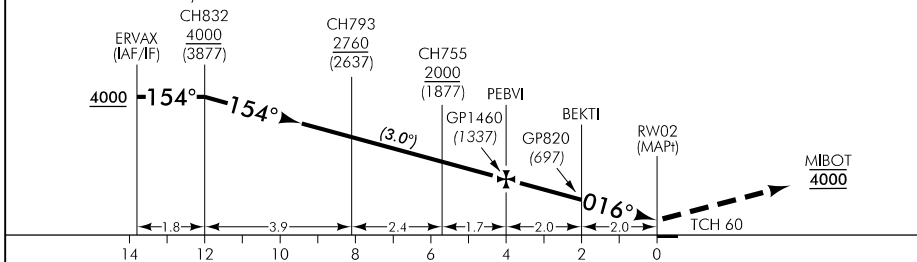
RWY 02 THR ELEV 123

RNAV (RNP) V RWY 02

CHRISTCHURCH APPROACH: 120.9 126.1 128.75 TOWER: 118.4 119.65 ATIS: 127.2



Use Christchurch QNH only



MISSED APCH: MAX IAS 210 kt. Track via the RNAV (RNP) Missed Approach to MIBOT **4000**

Category	A	B	C	D
RNP 0.30	NA		530(407) – 1500	
1. Procedure NA when AD temperature is below -10°C or above 47°C 2. RF required 3. RNP 0.3 initial and intermediate segments, RNP 1.0 missed approach segment				

Effective: 26 MAR 20

Changes from 8 NOV 18: Minimo, missed APCH track to MIBOT and text, CH747 ommended to BEKTI, BEKTI to RWY02 track.

