

ELEV 123

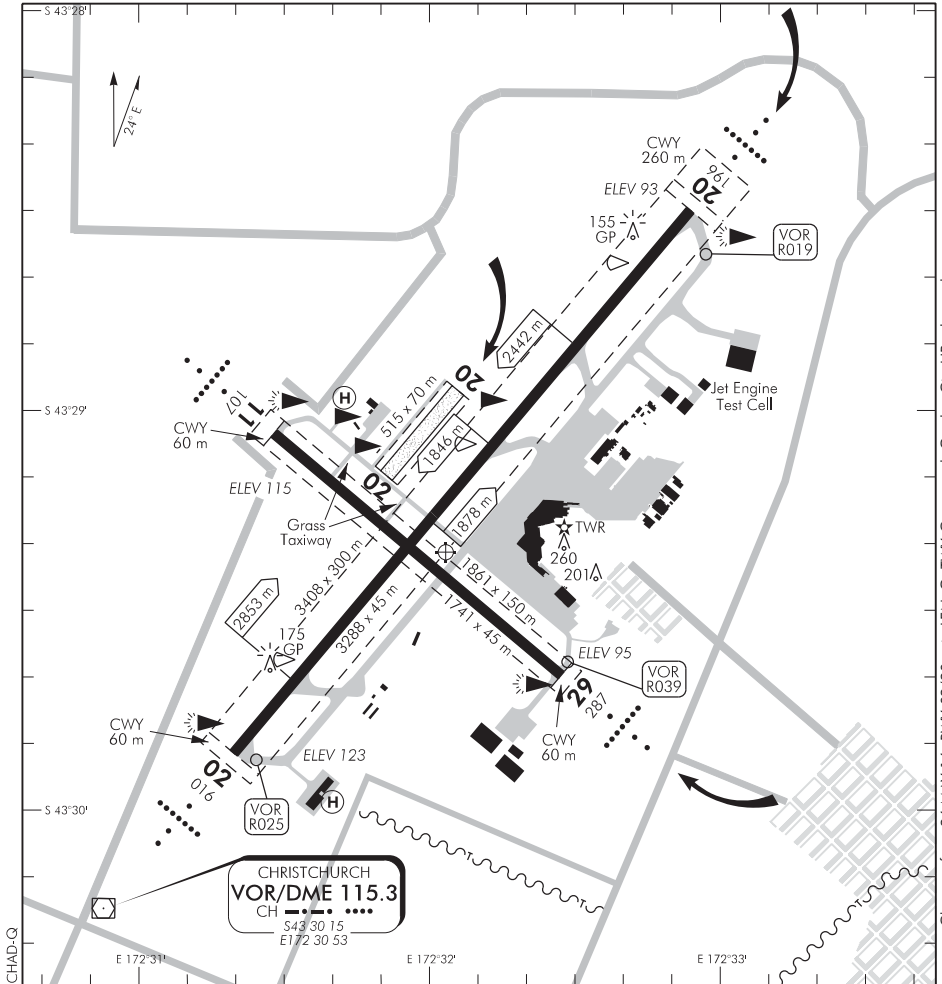
NZCH

TOWER: 118.4 119.65

GROUND: 121.9 119.65

DELIVERY: 128.2

ATIS: 127.2

**CHRISTCHURCH
AERODROME (1)**

1. Circuit: RWY 02, 11 — Left hand
RWY 20, 29 — Right hand
2. Circuit altitudes unless otherwise instructed by ATC:
 - (a) Using grass runway — 900 ft AMSL.
 - (b) Using sealed runways — 1500 ft AMSL.
3. ATC Speed Requirements:

Arriving IFR: Unless otherwise approved or assigned by ATC, aircraft must fly an instrument approach at the promulgated speeds, with a MNM 150 kt IAS to 5 NM on final approach. If unable to comply with promulgated speeds, advise ATC with preferred speed.

VFR in circuit (except Grass RWY 02/20):
approach speed of not less than 90 kt IAS when above 400 ft AMSL.
4. RWY 11/29 not available to Code E or F ACFT (except for emergency use) due to lack of sealed shoulders and incompatible TWY access and egress.

*(continued)***Effective: 25 MAY 17**

S 43 29 22 E 172 32 04

© Civil Aviation Authority

**CHRISTCHURCH
AERODROME (1)**

CHRISTCHURCH
AERODROME (2)

5. Grass Runway 02/20
 - (a) Area:
Grass Taxiway D marked by white marker boards on the eastern edge and yellow marker boards on western edge.
 - (b) Circuit:
Whenever possible do not extend further north or south than abeam main paved RWY 02/20 thresholds.
 - (c) Taxiing Procedure:
Aircraft after landing vacate to the Western Apron unless otherwise instructed by ATC. After landing Grass RWY 02 turn left, and after landing Grass RWY 20 turn right.
 - (d) Taking off, on touch-and-go or low approach:
Because of simultaneous operations on the main RWY 02/20 aircraft taking off, on touch-and-go or low approach **must not converge towards the main runway**. Passing 420 ft AMSL aircraft are to commence a turn to diverge away from the main runway by at least 10°, then fly a square crosswind. The turn is not required if ATC confirm on departure a non-standard turn towards the main runway.
 - (e) Transponder Operation:
VFR aircraft operating in the circuit for Grass RWY 02/20 are to set their transponder to code **2200**, unless otherwise directed by ATC.
6. **CAUTION:** ● Bird hazard. Refer to NZCH AD 2.23.
 - Jet engine test cell. Refer to NZCH AD 2.23 and page NZCH AD 2-53.1.
7. MET balloons released irregularly. Refer to Table ENR 5.3-7.
8. Aircraft making a touch-and-go, go-around or missed approach off main RWY 02/20, in VMC, should maintain a track on or east of the RWY centreline due to potential grass runway traffic.
9. Low visibility operations are detailed in Ground Movements (6), (7) & (8).