



CHRNAV/SID02-1-F

ALL DEPARTURES Contact CHRISTCHURCH APPROACH 120.9 MHz as soon as practicable prior to 1500 ft, or as instructed

- Note 1. Minimum net climb gradient 3.3% (200 ft/NM) unless higher stated
- Note 2. ATC requirement:

CAT B aircraft speed restriction MNM 150 kt MAX 170 kt to NUBKA
CAT C and D aircraft speed restriction MNM 150 kt to MABIB
 - if unable to comply advise Delivery on start-up

Evaluated Climb Sector: Within 20 NM CH DME in any direction except R095 - R135 CH VOR beyond 5 DME

RWY 02

UBDAN FOUR PAPA DEPARTURE - RNAV (UBDANK4P)

MNM net climb gradient 8.1% (500 ft/NM) to 2000 ft
 - if unable to comply advise Delivery prior to start-up

- Track 016° to NUBKA (fly-over)
- Cross NUBKA at or above 2000 ft
- Turn LEFT, direct to MABIB
- Track 195° via GOBAT to UBDAN, MAX IAS 210 kt until turn complete

TRANSITIONS:

GUPUT

- From UBDAN turn RIGHT, track 214° to GUPUT

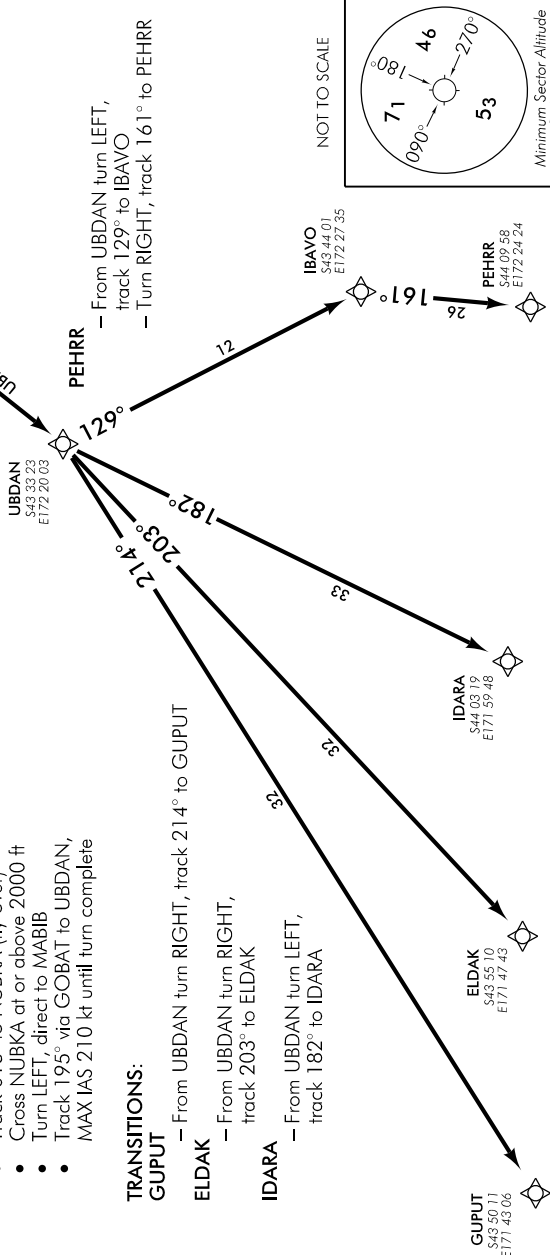
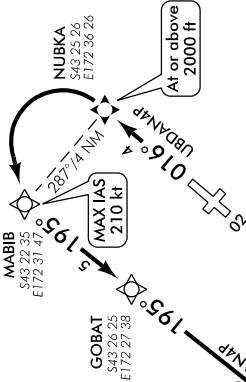
ELDAK

- From UBDAN turn RIGHT, track 203° to ELDAK

IDARA

- From UBDAN turn LEFT, track 182° to IDARA

**Navigation requirement: RNAV1
GNSS required**



Changes from 29 MAR 18: FL250 ATM restriction removed.