

CHRNAVSD20-2-E

ALL DEPARTURES

Contact CHRISTCHURCH APPROACH 120.9 MHz as soon as practicable prior to 1500 ft, or as instructed.

Note 1. Minimum net climb gradient 3.3% (200 ft/NM) unless higher stated

2. ATC clearances:

CAT B aircraft speed restriction MINM 150 kt

MAX 170 kt to NISOM

CAT C and D aircraft speed restriction MINM 150 kt

MAX 220 kt to 6000 ft

- if unable to comply advise Delivery on start-up

Evaluated Climb Sector: Within 20 NM CH DME in any direction except R095 - R135 CH VOR beyond 5 DME

**RWY 20
KADET FOUR QUEBEC DEPARTURE - RNAV (KADET4Q)**

MINM net climb gradient 7.8% (480 ft/NM) to 2000 ft

- if unable to comply advise Delivery prior to start-up

• Track 196° to NISOM (fly-over)

• Cross NISOM at or above 2000 ft

• Turn RIGHT, track 287° to KADET

TRANSITIONS:

For flights on transitions via KABKA, VANDA, KABIN, MOLGI:

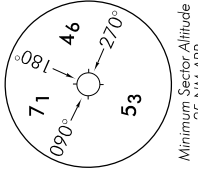
• Cleared level FL250

• Expect further clearance to filed level prior to 100 NM CH

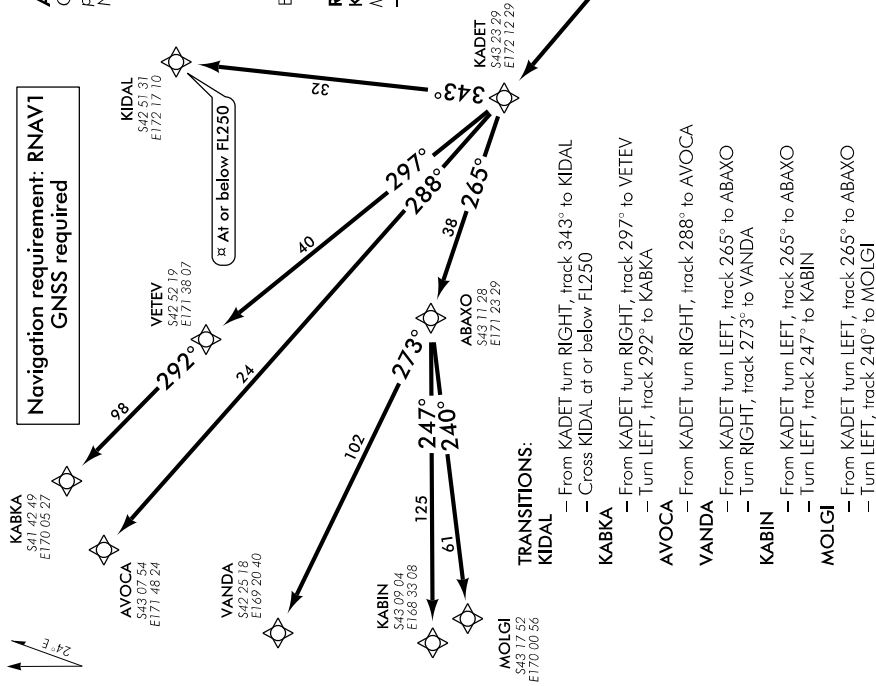
• Cross NZCC/NZZO FIR BDRY at cleared level or advise

• ATC if unable

✘ ATC Restriction
NOT TO SCALE



Navigation requirement: RNAV1
GNSS required



TRANSITIONS:

KIDAL - From KADET turn RIGHT, track 343° to KIDAL

- Cross KIDAL at or below FL250

KABKA - From KADET turn RIGHT, track 297° to VETEY

- Turn LEFT, track 292° to KABKA

AVOCA - From KADET turn RIGHT, track 288° to AVOCA

VANDA - From KADET turn LEFT, track 265° to ABAXO

- Turn RIGHT, track 273° to VANDA

KABIN - From KADET turn LEFT, track 265° to ABAXO

- Turn LEFT, track 247° to KABIN

MOLGI - From KADET turn LEFT, track 265° to ABAXO

- Turn LEFT, track 240° to MOLGI

Changes from 1 FEB 18: Crossing restriction at KIDAL added.