

ELEV 123

CAT A,B,C,D

# CHRISTCHURCH RNAV SID RWY 29 (1)

NZCH

CHRISTCHURCH APPROACH: 120.9 126.1 128.75 TOWER: 118.4 119.65 ATIS: 127.2

CHRNAV SID 29-1-H



**ALL DEPARTURES** Contact CHRISTCHURCH APPROACH 120.9 MHz as soon as practicable prior to 1500 ft, or as instructed

Note 1. Minimum net climb gradient 3.3% (200 ft/NM) unless higher stated  
2. ATC requirement:

CAT B aircraft speed restriction MINM 150 kt MAX 170 kt to NILEX  
CAT C and D aircraft speed restriction MINM 150 kt MAX 220 kt to 6000 ft

- 3. - if unable to comply advise Delivery on start-up  
**CAUTION:** Close-in obstacle not considered in climb gradient  
Tree: 201 ft AMSL, 249°/315 m from CWY END

Evaluated Climb Sector: Within 20 NM CH DME in any direction except R095 - R135 CH VOR beyond 5 DME

**RWY 29**

**KABOD FOUR ROMEO DEPARTURE - RNAV (KABOD4R)**

MINM net climb gradient 7.8% (480 ft/NM) to 2000 ft  
- if unable to comply advise Delivery prior to start-up

- Track 286° to NILEX (fly-over)
- Cross NILEX at or above 2000 ft
- Turn RIGHT, track 013° to KABOD

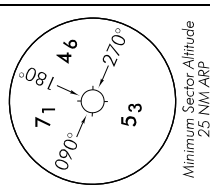
**TRANSITIONS:**

**PORAM**  
- From KABOD turn LEFT, track 340° to PORAM

**GLENN**  
- From KABOD turn LEFT, track 355° to GLENN

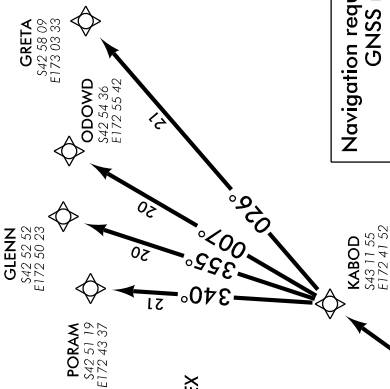
**ODOWD**  
- From KABOD turn LEFT, track 007° to ODOWD

**GRETA**  
- From KABOD turn RIGHT, track 026° to GRETA

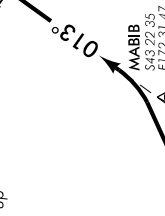


NOT TO SCALE

**Navigation requirement: RNAVI  
GNSS required**



**KABOD4R**  
18  
013°



**NILEX**  
4  
286°

At or above 2000 ft



**REPAPIR**  
20  
077°

**REPAPIR**  
25  
072°

**CH789**  
S43 35 16  
E173 30 34

**LALAP**  
S43 36 14  
E174 09 26

**REPAPIR ONE ROMEO DEPARTURE - RNAV (REPAPIR)**  
MINM net climb gradient 7.8% (480 ft/NM) to 2000 ft  
- if unable to comply advise Delivery prior to start-up

- Track 286° to NILEX (fly-over)
- Cross NILEX at or above 2000 ft
- Turn RIGHT, direct to MABIB
- Turn RIGHT, track 090° to REPAPIR

**TRANSITIONS:**

**LALAP**  
- From REPAPIR turn LEFT, track 077° to CH789  
- Turn LEFT, track 072° to LALAP

Changes from 29 MAR 18: FL250 ATM restriction removed.

ELEV 123

CAT A,B,C,D

# CHRISTCHURCH

NZCH

## RNAV SID RWY 29 (2)

CHRISTCHURCH APPROACH: 120.9 126.1 128.75 TOWER: 118.4 119.65 ATIS: 127.2

### ALL DEPARTURES

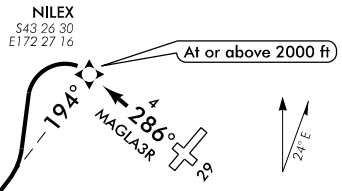
Contact CHRISTCHURCH APPROACH 120.9 MHz as soon as practicable prior to 1500 ft, or as instructed

- Note 1. Minimum net climb gradient 3.3% (200 ft/NM) unless higher stated
- 2. ATC requirement:

**CAT B aircraft speed restriction**  
 MNM 150 kt MAX 170 kt to NILEX  
**CAT C and D aircraft speed restriction**  
 MNM 150 kt MAX 220 kt to 6000 ft  
 – if unable to comply advise  
 Delivery on start-up

- 3. **CAUTION:** Close-in obstacle not considered in climb gradient  
 Tree: 201 ft AMSL, 249°/315 m from CWY END

Navigation requirement: RNAV1  
GNSS required



Evaluated Climb Sector:  
 Within 20 NM CH DME in any direction  
 except R095–R135 CH VOR beyond  
 5 DME

**RWY 29  
 MAGLA THREE ROMEO DEPARTURE –  
 RNAV (MAGLA3R)**  
 MNM net climb gradient 7.8% (480 ft/NM)  
 to 2000 ft – if unable to comply advise  
 Delivery prior to start-up

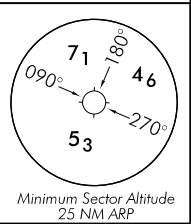
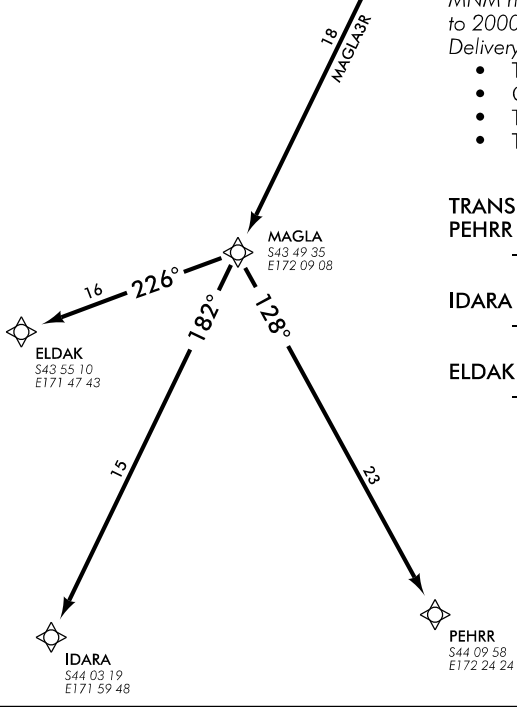
- Track 286° to NILEX (fly-over)
- Cross NILEX at or above 2000 ft
- Turn LEFT, track 194° to UBDAN
- Turn LEFT, track 182° to MAGLA

### TRANSITIONS:

**PEHRR**  
 – From MAGLA turn LEFT,  
 track 128° to PEHRR

**IDARA**  
 – From MAGLA track 182°  
 to IDARA

**ELDAK**  
 – From MAGLA turn RIGHT,  
 track 226° to ELDAK



NOT TO SCALE

Changes from 29 MAR 18: FL250 ATM restriction removed.

CHRNAV SID 29-2-F

Effective: 13 SEP 18