

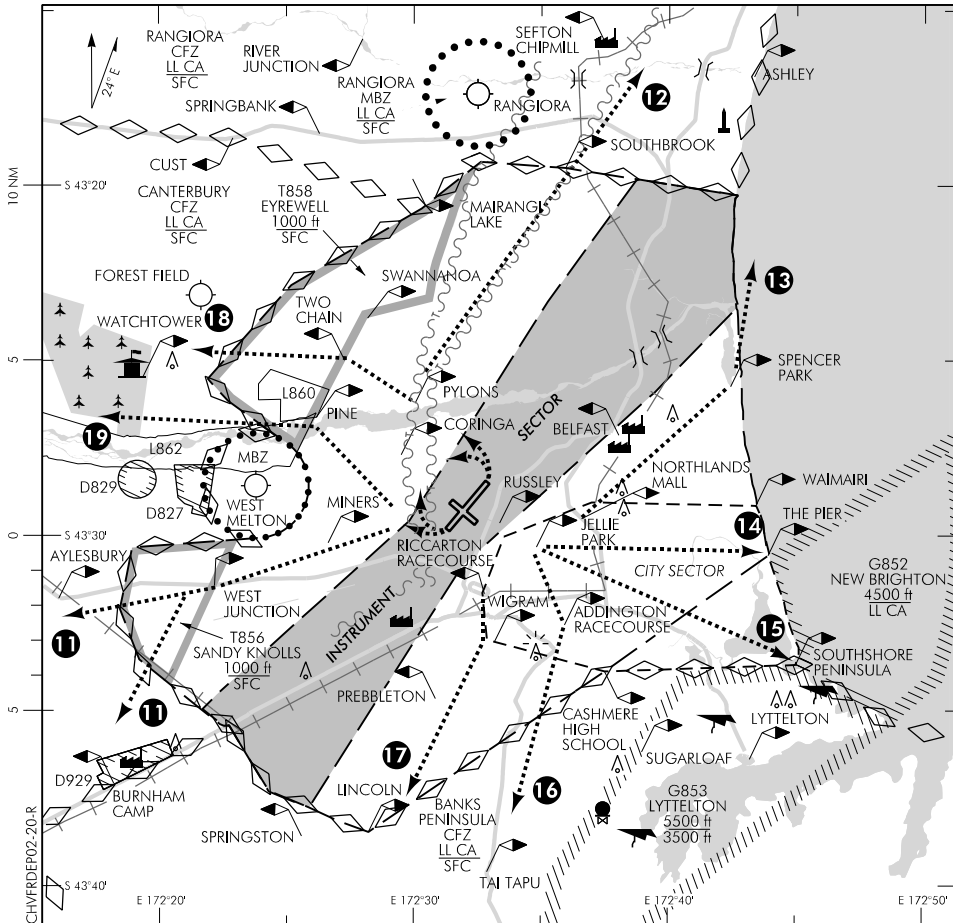
ELEV 123

NZCH

TOWER: 118.4 119.65

CHRISTCHURCH**VFR DEPARTURE PROCEDURES RWY 02/20 (1)**

ATIS: 127.2



Changes from 26 MAY 16: CFZs updated, Miners and Waimairi VRPs added, forestry depiction.

REFER ALSO VISUAL NAVIGATION CHARTS**For VFR flights departing Christchurch on RWY 02 or 20 and leaving the Christchurch CTR/C.**

Listen to ATIS for conditions at Christchurch Airport.

Unless otherwise cleared, follow published circuit rules and then leave the circuit directly onto the cleared departure procedure. **Leave the Instrument Sector as soon as possible.**

Altitude instructions may be varied by the Tower. More direct plain language instructions may be issued on request, or in periods of low traffic.

Aircraft leaving CTR to the north - aircraft entering the Rangiora Common Frequency Zone should change to 120.2 MHz as soon as possible after leaving the Christchurch CTR.

Aircraft leaving CTR to the west - caution B875 West Melton, VFR transit lanes T858 (Eyrewell) and T856 (Sandy Knolls), low flying zones L860 and L862 and Forest Field circuit traffic. Aircraft entering the Canterbury Common Frequency Zone should change to 119.2 MHz as soon as possible after leaving the Christchurch CTR.

Aircraft leaving CTR to the south - aircraft entering the Banks Peninsula Common Frequency Zone should change to 118.75 MHz as soon as possible after leaving the Christchurch CTR. (continued)

Effective: 10 NOV 16

© Civil Aviation Authority

CHRISTCHURCH
VFR DEPARTURE PROCEDURES RWY 02/20 (1)

ELEV 123

NZCH

TOWER: 118.4 119.65

CHRISTCHURCH**VFR DEPARTURE PROCEDURES RWY 02/20 (2)**

ATIS: 127.2

Listen to ATIS for conditions at Christchurch Airport.

Communications Failure

Vacate the Christchurch CTR/C via the assigned departure procedure. **Squawk 7600.**

REFER TO DIAGRAM ON PREVIOUS PAGE AND VNC.

- 11 West Junction Dep (RWY 02/20) From crosswind leg intercept the track Coringa direct to West Junction, thence leave the CTR tracking **west** of a line from West Junction to Burnham Camp, 1500 ft or below.
- 12 Southbrook Dep (RWY 02/20) From crosswind leg, track **west** of a line Pylons to Southbrook 1500 ft or below.
- 13 Spencer Park Dep (RWY 02/20) Track to Northlands Mall, thence to Spencer Park, 1500 ft or below. Leave the CTR at Spencer Park.
- 14 Pier Dep (RWY 02 only) Track direct to The Pier, 1500 ft or below until inside the City Sector, thence 2500 ft or below. Report entering the New Brighton GAA.
- 15 Estuary Dep (RWY 20 only) Track direct to Southshore, 1500 ft or below until inside the City Sector, thence 2500 ft or below. Report entering the New Brighton GAA.
- 16 Addington Dep (RWY 02 only) Track to Addington Racecourse thence to Tai Tapu, 1500 ft or below.
- 17 Riccarton Dep (RWY 20 only) Track to Riccarton Racecourse then direct to Lincoln, 1500 ft or below.
- 18 Two Chain Dep (RWY 02 only) From crosswind leg track via Pylons direct to Two Chain, thence leave the CTR tracking **west**, 1500 ft or below. Caution Forest Field circuit traffic.
- 19 Pine Dep (RWY 20 only) From crosswind leg track direct to Pine, thence leave the CTR tracking **west**, 1500 ft or below.