

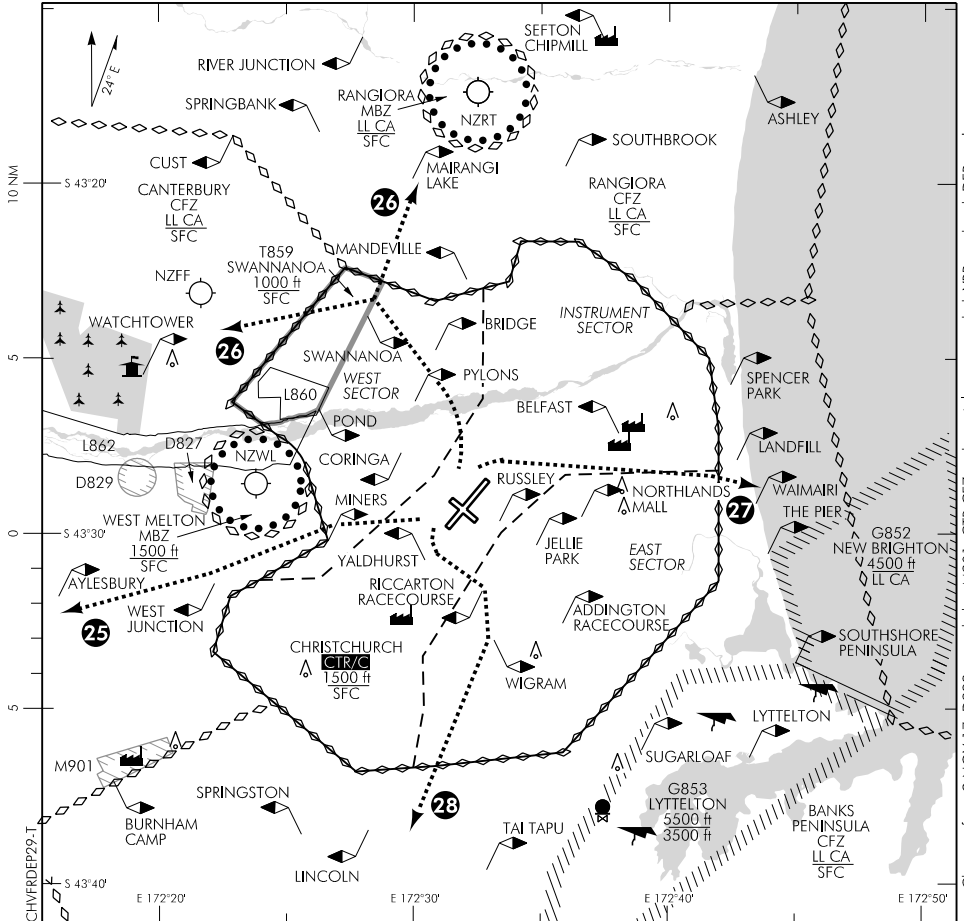
ELEV 123

NZCH

TOWER: 118.4 119.65

**CHRISTCHURCH****VFR DEPARTURE PROCEDURES RWY 29 (1)**

ATIS: 127.2



Changes from 9 NOV 17: D9229 amended to M901, CTR CFZ and transit lanes amended, VRPs updated, DEP tracks.

**REFER ALSO VISUAL NAVIGATION CHARTS****For VFR flights departing Christchurch on RWY 29 and leaving the Christchurch CTR/C.**

Listen to ATIS for conditions at Christchurch Airport.

Altitude instructions may be varied by the Tower. More direct plain language instructions may be issued on request, or in periods of low traffic.

Aircraft leaving CTR to the north - aircraft entering the Rangiora Common Frequency Zone should change to 120.2 MHz as soon as possible after leaving the Christchurch CTR.

Aircraft leaving CTR to the west - caution B875 West Melton, VFR transit lane T859 (Swannanoa) and low flying zones L860 and L862 and Forest Field circuit traffic. Aircraft entering the Canterbury Common Frequency Zone should change to 119.2 MHz as soon as possible after leaving the Christchurch CTR.

Aircraft leaving CTR to the south and east - aircraft entering the Banks Peninsula Common Frequency Zone should change to 118.75 MHz as soon as possible after leaving the Christchurch CTR.

**Effective: 8 NOV 18**

© Civil Aviation Authority

**CHRISTCHURCH**  
**VFR DEPARTURE PROCEDURES RWY 29 (1)**

ELEV 123

NZCH

TOWER: 118.4 119.65

**CHRISTCHURCH****VFR DEPARTURE PROCEDURES RWY 29 (2)**

ATIS: 127.2

Listen to ATIS for conditions at Christchurch Airport.

**REFER TO DIAGRAM ON PREVIOUS PAGE AND VNC.**

- |    |                  |  |
|----|------------------|--|
| 25 | 29 Miners Dep    | After take-off turn left, leave the CTR northwest of Miners 1500 ft or below. Caution the West Melton MBZ.   |
| 26 | 29 Swannanoa Dep | Track east of Pylons and east of Swannanoa, thence leave the CTR north of the Eyre River and west of Mandeville 1500 ft or below.                        |
| 27 | 29 Waimairi Dep  | Track north of Northlands Mall to Waimairi 1500 ft or below.   |
| 28 | 29 Lincoln Dep   | After take-off turn left, track via Riccarton Racecourse and Wigram, thence leave the CTR towards the eastern edge of Lincoln township 1500 ft or below. |

**Note:**

All departure procedures are commenced at completion of the crosswind leg. The crosswind leg will usually be a turn in the shortest direction to the initial departure point but must be confirmed by ATC prior to take-off if contrary to normal circuit direction.