

ELEV 123

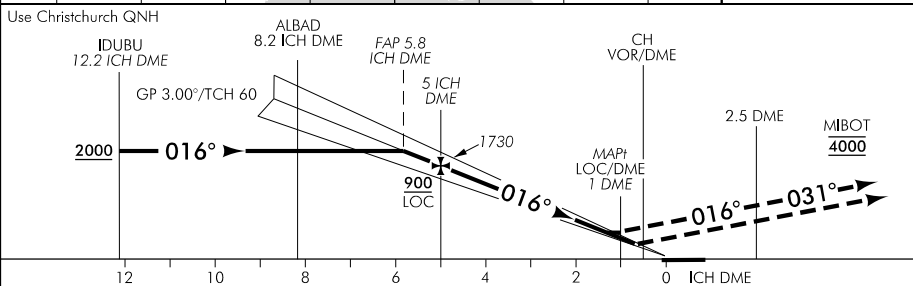
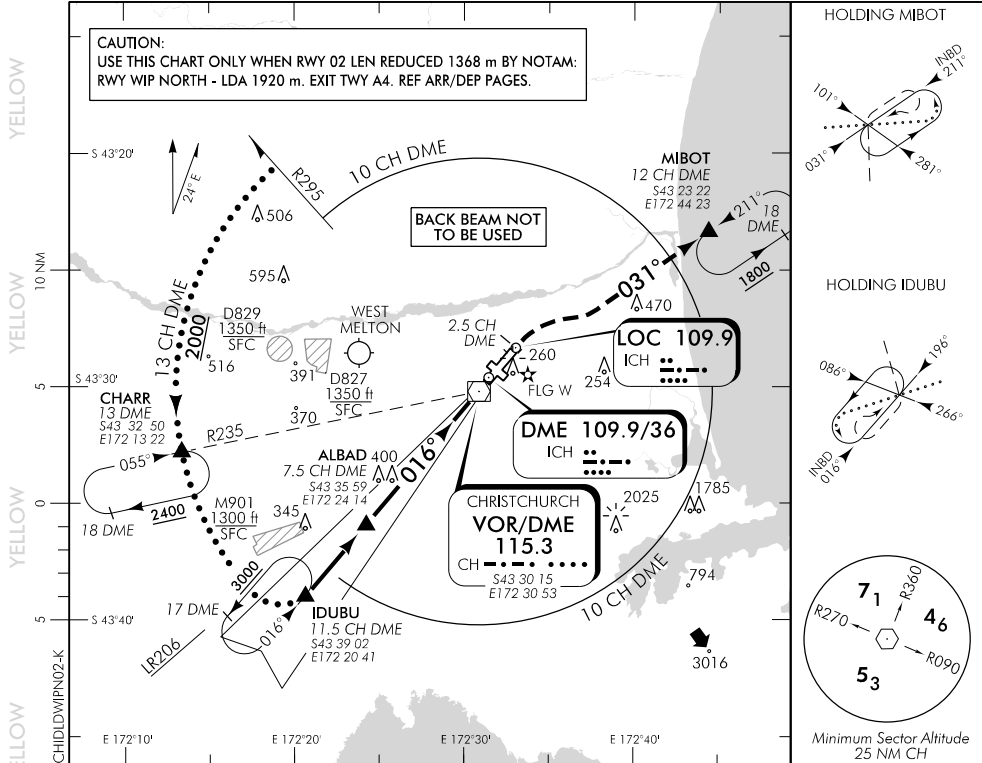
CAT A,B,C,D

CHRISTCHURCH

RWY 02 THR ELEV 123

ILS/DME N or LOC/DME N RWY 02

CHRISTCHURCH APPROACH: 120.9 126.1 128.75 TOWER: 118.4 119.65 ATIS: 127.2



MISSED APCH: MAX IAS 210 kt. Track 016° to 2.5 CH DME, turn RIGHT intercept R031 to MIBOT 4000

ICH DME DIST	10	9	8	7	6	5	4	3	2	1.3	0.7
Advisory Altitude 3°	3380	3050	2710	2380	2050	1730	1400	1080	750	MDA	DA
Category	A		B			C		D/D _L			
ILS/DME (CAT 1)	323(200) – 800 or RVR 550										
ILS/DME LH ALS U/S	373(250) – 1200										
LOC/DME	520(397) – 1500										
Circling	640(517) – 1900		660(537) – 2800			*830(707) – 3700		*860(737) – 4600			

* CAT C/D circling airspace containment not assured.

Effective: 10 SEP 20

© Civil Aviation Authority

CHRISTCHURCH
ILS/DME N or LOC/DME N RWY 02

Changes from 16 JUL 20: Circling minima.

ELEV 123

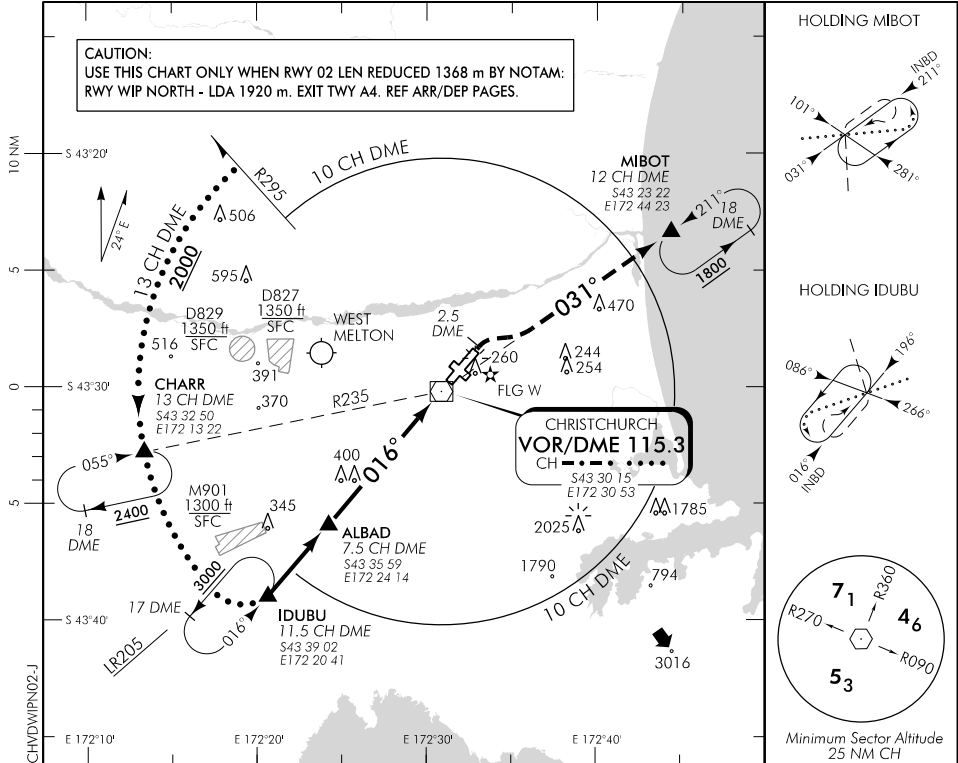
CAT A,B,C,D

CHRISTCHURCH

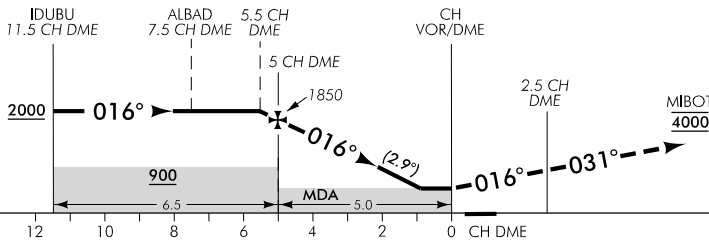
RWY 02 THR ELEV 123

VOR/DME N RWY 02

CHRISTCHURCH APPROACH: 120.9 126.1 128.75 TOWER: 118.4 119.65 ATIS: 127.2



Use Christchurch QNH



MISSED APCH: MAX IAS 210 kt. Track 016° to 2.5 CH DME, turn RIGHT intercept R031 to MIBOT **4000**

CH DME DIST	10	9	8	7	6	5	4	3	2	1	0.9	MAPt
Advisory Altitude 5%	3350	3050	2750	2450	2150	1850	1550	1250	950	650	MDA	MDA
Category	A			B			C			D		
VOR/DME	620(497) - 1500						620(497) - 1900					
Circling	640(517) - 1900			660(537) - 2800			*830(707) - 3700			*860(737) - 4600		

* CAT C/D circling airspace containment not assured.

Changes from 26 MAR 20: Circling minima.

Effective: 10 SEP 20