

ELEV 123

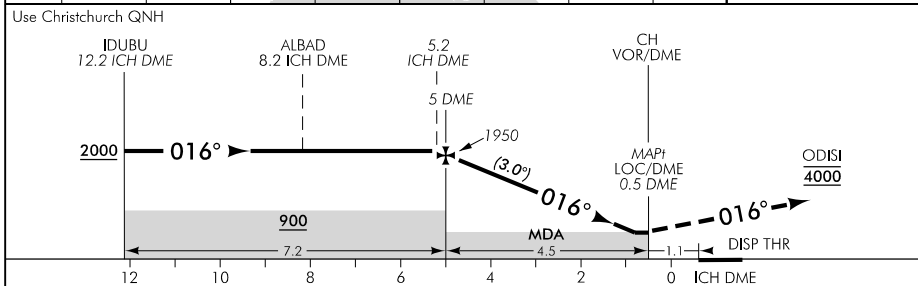
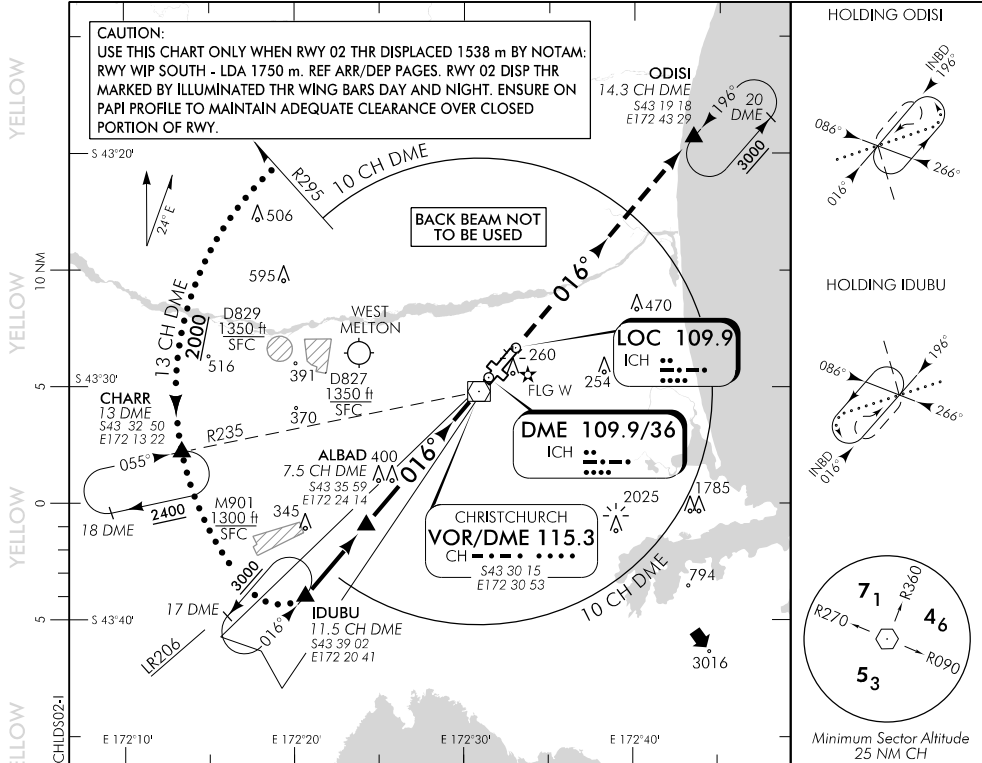
CAT A,B,C,D

CHRISTCHURCH

DISP RWY 02 THR ELEV 106

LOC/DME S RWY 02

CHRISTCHURCH APPROACH: 120.9 126.1 128.75 TOWER: 118.4 119.65 ATIS: 127.2



MISSED APCH: MAX IAS 185 kt. Track 016° to ODISI 4000

ICH DME DIST	10	9	8	7	6	5	4	3	2	1	0.8	0.5
Advisory Altitude 5.2%	3550	3230	2910	2590	2270	1950	1630	1310	990	670	MDA	MAPt
Category	A			B			C		D			
LOC/DME	610(504) - 3600						610(504) - 4400					
Circling	650(527) - 3100						*740(617) - 3700		*790(667) - 4600			

* CAT C/D circling airspace containment not assured.

Changes from 29 MAR 18: D929 amended to M901, CAT C/D circling note added, DME channel added.

Effective: 31 JAN 19

ELEV 133

CAT A,B,C,D

CHRISTCHURCH

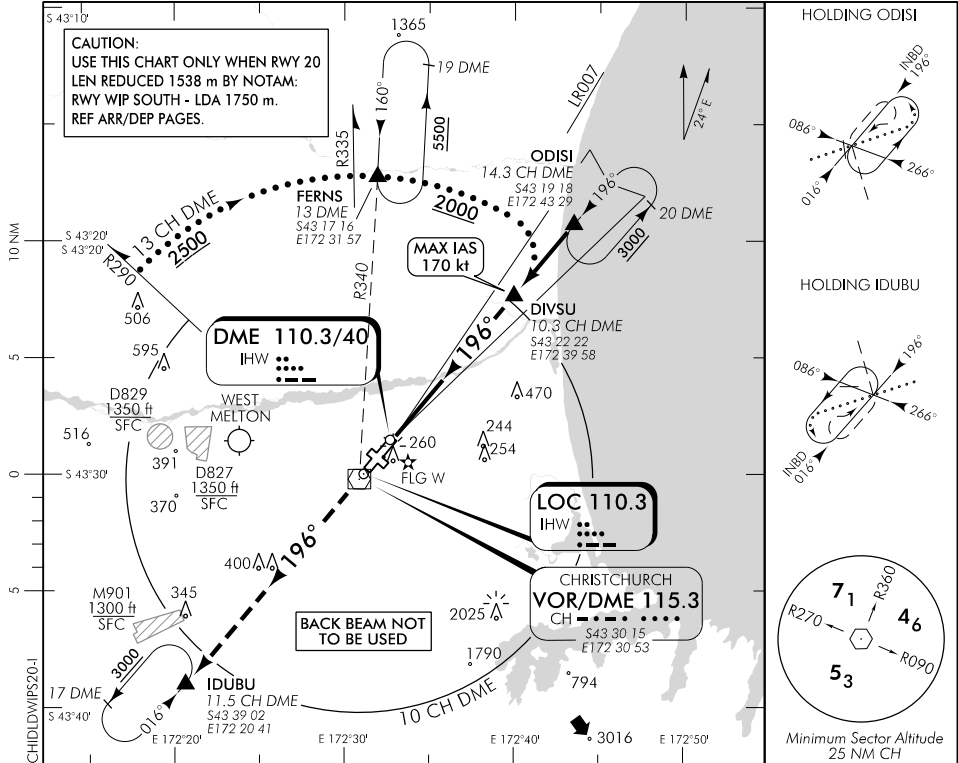
RWY 20 THR ELEV 93

ILS/DME S or LOC/DME S RWY 20

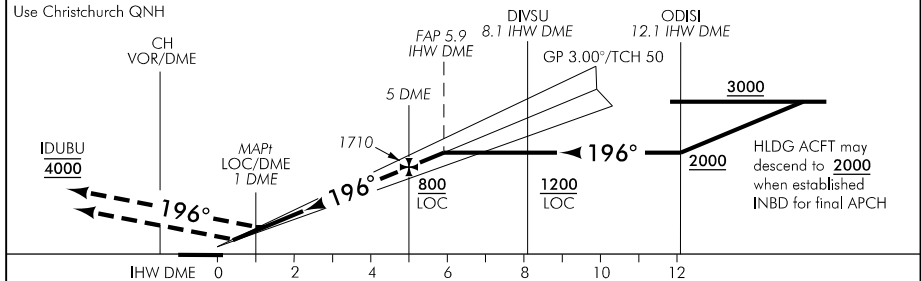
CHRISTCHURCH APPROACH: 120.9 126.1 128.75

TOWER: 118.4 119.65

ATIS: 127.2



Changes from 29 MAR 18: D929 amended to M901, CAT C/D circling note added, DME channel added.



MISSED APCH: MAX IAS 185 kt. Track 196° to IDUBU 4000

IHW DME DIST	0.6	1	1.1	2	3	4	5	6	7	8	9	10
Advisory Altitude 3"	DA	410	MDA	730	1060	1380	1710	2040	2370	2700	3030	3370
Category	A			B			C			D/D _L		
ILS/DME (CAT I)	293(200) - 800											
ILS/DME LH ALS U/S	343(250) - 1200											
LOC/DME	450(357) - 1500											
Circling	650(527) - 1900			650(527) - 2800			*740(617) - 3700			*790(667) - 4600		

* CAT C/D circling airspace containment not assured.

Effective: 31 JAN 19