

ELEV 123

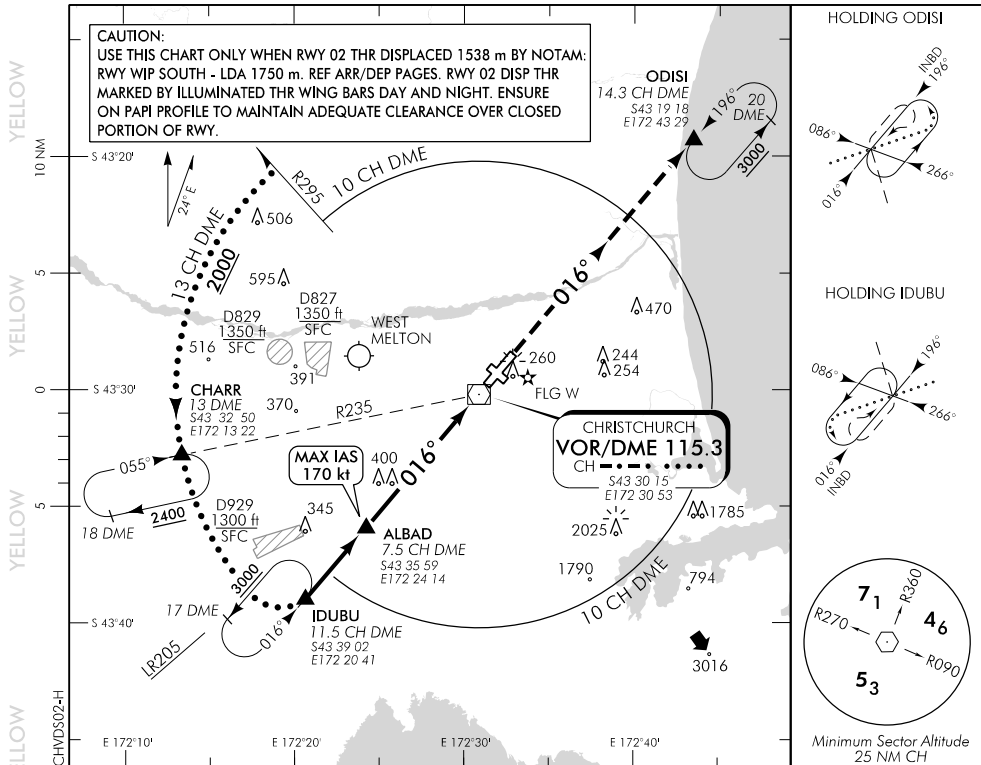
CAT A,B,C,D

CHRISTCHURCH

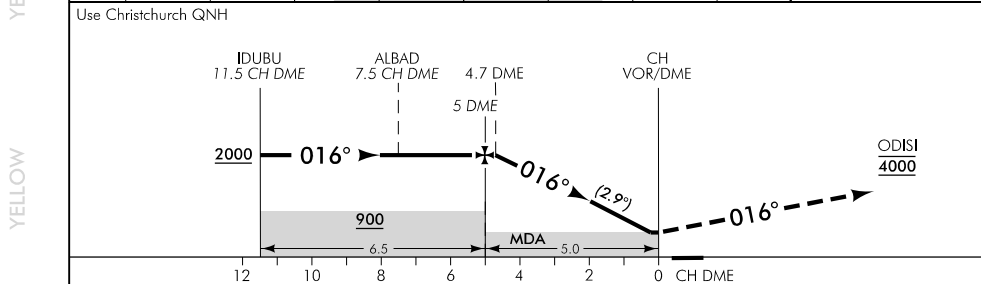
DISP RWY 02 THR ELEV 106

VOR/DME S RWY 02

CHRISTCHURCH APPROACH: 120.9 126.1 128.75 TOWER: 118.4 119.65 ATIS: 127.2



Use Christchurch QNH



CH DME DIST	10	9	8	7	6	5	4	3	2	1	0.2	MAPt
Advisory Altitude 5%	3550	3250	2950	2650	2350	2050	1750	1450	1150	850	MDA	MDA
Category	A			B			C			D		
VOR/DME	620(514) - 3600						620(514) - 4400					
Circling	650(527) - 3100						740(617) - 3700			790(667) - 4600		

Effective: 29 MAR 18

Changes from 1 FEB 18: Missed approach altitude at ODISI.

ELEV 123

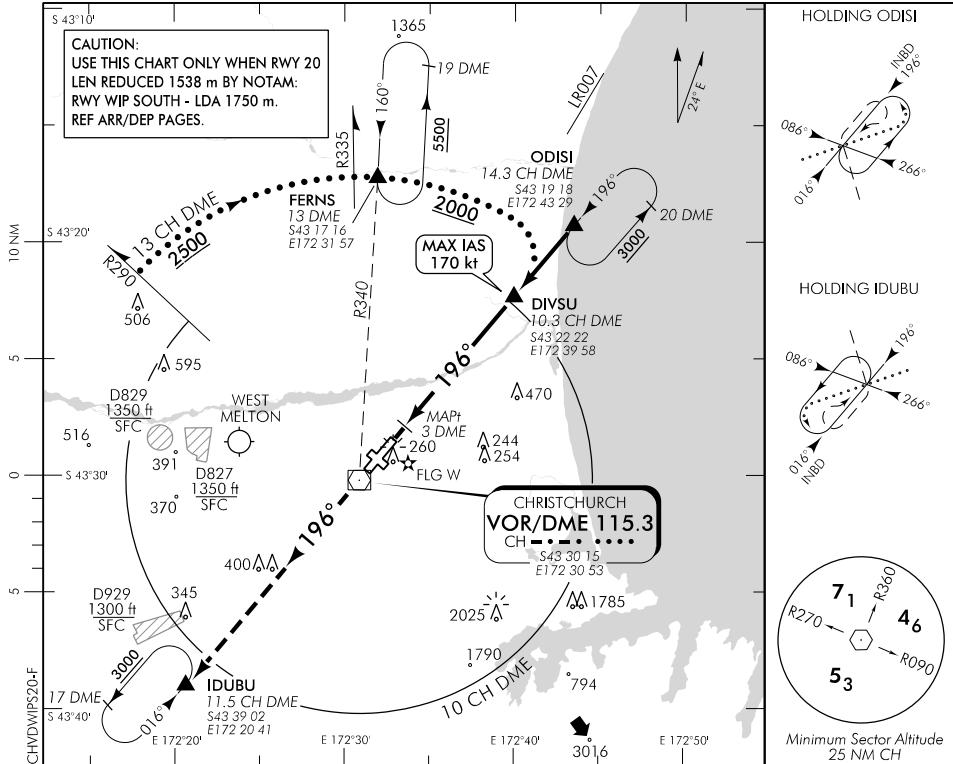
CAT A,B,C,D

CHRISTCHURCH

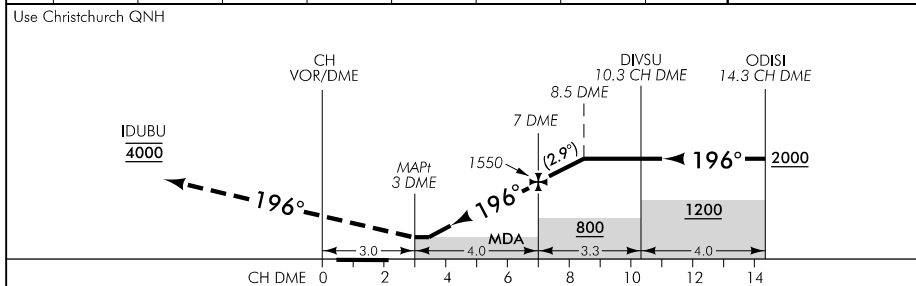
RWY 20 THR ELEV 93

VOR/DME S RWY 20

CHRISTCHURCH APPROACH: 120.9 126.1 128.75 TOWER: 118.4 119.65 ATIS: 127.2



YELLOW YELLOW YELLOW YELLOW YELLOW YELLOW



MISSED APCH: MAX IAS 185 kt. Track 196° to IDUBU 4000

CH DME DIST	MAPt 3	3.4	4	5	6	7	8	9	10
Advisory Altitude 5%	MDA	MDA	650	950	1250	1550	1850	2150	2450
Category		A	B		C		D		
VOR/DME	480(387) - 1500								
Circling	650(527) - 1900		650(527) - 2800			740(617) - 3700		790(667) - 4600	

Effective: 29 MAR 18

Changes from 1 FEB 18: Missed approach altitude at IDUBU.