

ELEV 43

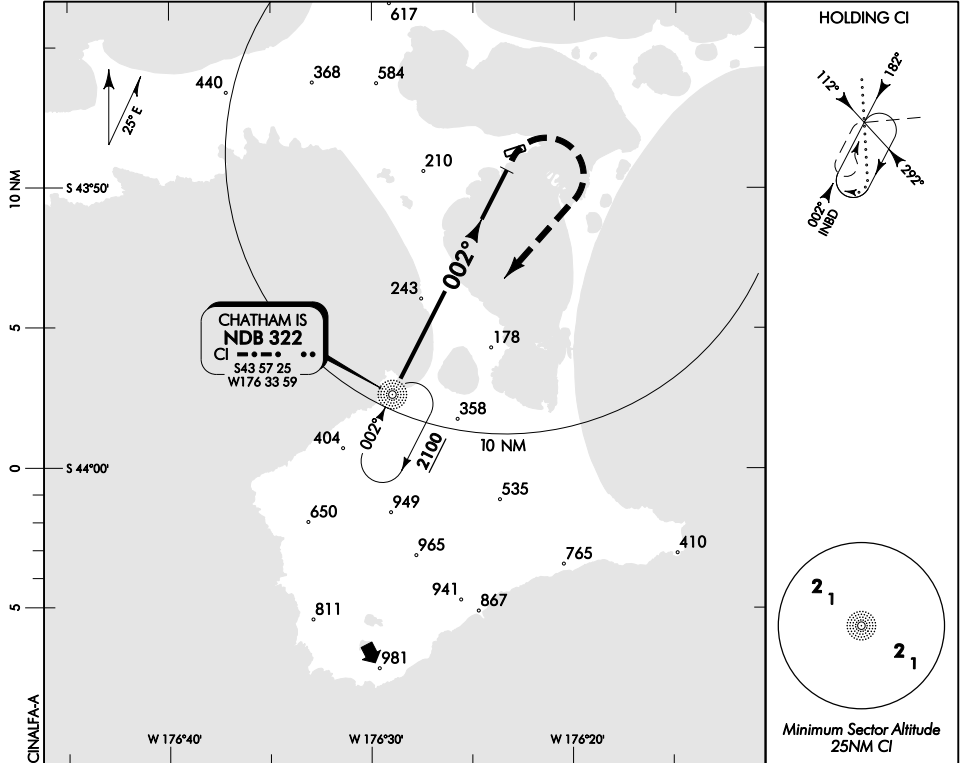
CAT A,B,C

CHATHAM IS/TUUTA

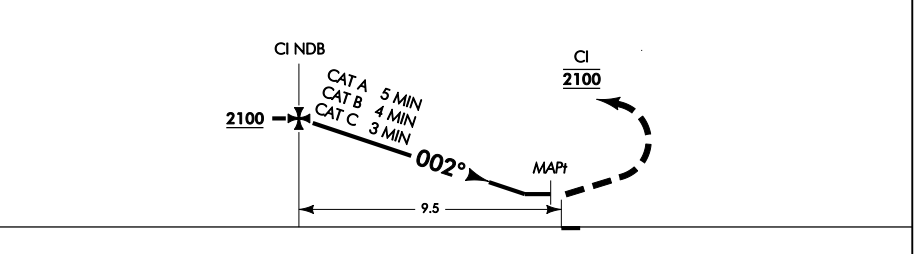
NDB A

FLIGHT INFORMATION: AUCKLAND A/G

UNATTENDED: 118.1



Use Chatham Islands QNH



MISSED APCH: Climbing RIGHT turn, enter CI holding 2100

Category	A	B	C	D
Circling NDB	D 740(697) - 1900	D 760(717) - 2800	D 830(787) - 3700	NA

Effective: 5 APR 12

CHATHAM IS/TUUTA NDB A



ELEV 43

CAT A,B,C

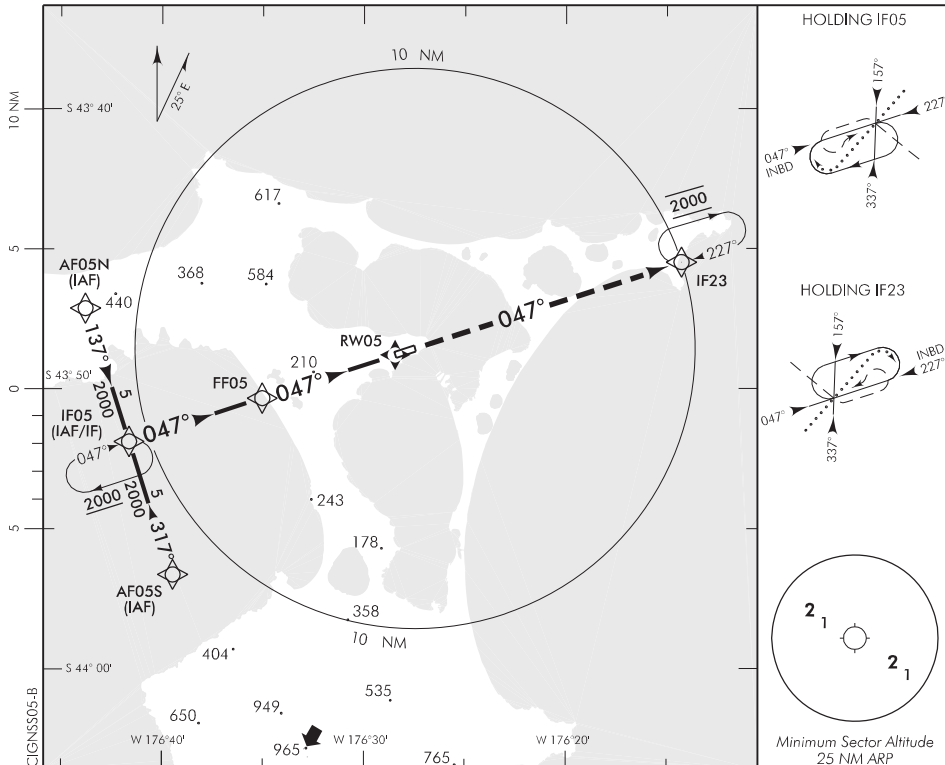
CHATHAM IS/TUUTA

RWY 05 THR ELEV 43

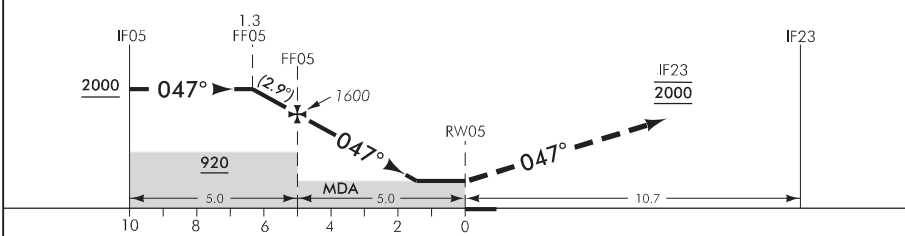
RNAV (GNSS) RWY 05

FLIGHT INFORMATION: AUCKLAND A/G

UNATTENDED: 118.1



Use Chatham Islands QNH



MISSED APCH: Climb on 047°, enter IF23 holding 2000

DISTANCE to WPT	IF05	4	3	2	1	FF05	4	3	2	1.4	RW05
Advisory Altitude 5%	3100	2800	2500	2200	1900	1600	1300	1000	700	MDA	MDA
Category	A			B			C			D	
RNAV	D 520(477) – 2000						D 520(477) – 2800			NA	
Circling	D 540(497) – 2000			D 600(557) – 2800			D 830(787) – 3700				

Changes from 4 SEP 03: Profile, advisory altitude table, editorial.

Effective: 12 APR 07

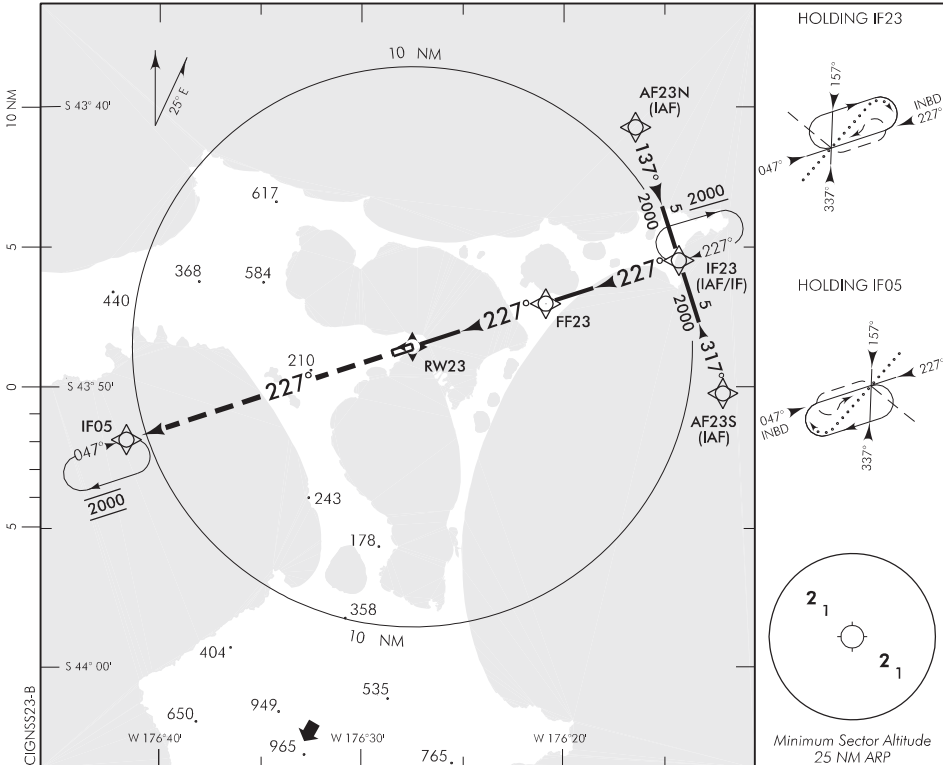
ELEV 43
 RWY 23 THR ELEV 27
 FLIGHT INFORMATION: AUCKLAND A/G

CAT A,B,C

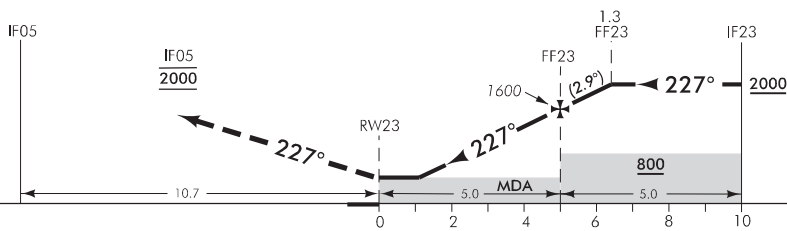
CHATHAM IS/TUUTA

RNAV (GNSS) RWY 23

UNATTENDED: 118.1



Use Chatham Islands QNH



MISSED APCH: Climb on 227°, enter IF05 holding 2000

DISTANCE to WPT	RW23	1.1	2	3	4	FF23	1	2	3	4	IF23
Advisory Altitude 5%	MDA	MDA	700	1000	1300	1600	1900	2200	2500	2800	3100
Category	A		B			C			D		
INAV	D 420(393) - 1600					D 420(393) - 2400			NA		
Circling	D 540(497) - 1900		D 600(557) - 2800			D 830(787) - 3700					

Changes from 4 SEP 03: Profile, advisory altitude table, editorial.

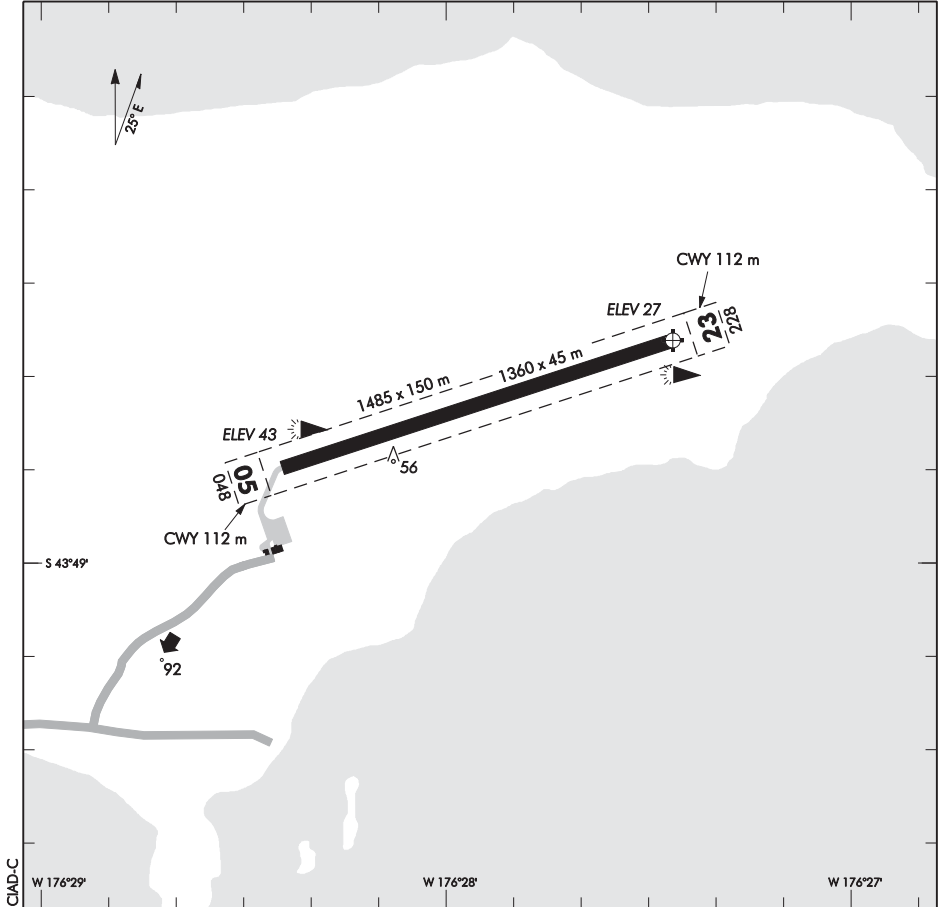
Effective: 12 APR 07

ELEV 43

NZCI

UNATTENDED: 118.1

CHATHAM IS/TUUTA AERODROME



1. All movements confined to sealed areas.
Avoid harsh braking and tight radius turns.

S 43 48 36 W 176 27 26

Effective: 25 JUL 13

© Civil Aviation Authority

CHATHAM IS/TUUTA AERODROME

NZCI

OPERATIONAL DATA**RWY**

RWY	SFC	Strength	Gp	Slope	ASDA	Take-off distance			LDG DIST
						1:20	1:30	1:62.5	
05 23	B	PCN 20 F/B/Y/T	8	0.4D 0.4U	1360			1472	1360

MINIMA

IFR Take-off		
RWY	Day	Night
05/23	500-1500	NA

LIGHTING

PAL 124.0: Non-standard operation — transmit 4 times within 3 seconds. Lights will remain lit for 30 minutes. During the last 5 minutes WDI lights will flash.

The 30-minute cycle can be started again by activating PAL

Runway: 05/23 REIL, LIL RWY PAPI 3.0/TCH 48
Strobes and runway dimming activation by ground personnel

Aerodrome: WDI

Apron: Floodlighting — activated by ground personnel

FACILITIES

Nil

SUPPLEMENTARY

Operator: Chatham Islands Airport Limited, PO Box 65, Chatham Island.
Tel (03) 305 0066 Fax (03) 305 0248

Available for limited use, with prior agreement of operator required at least 48 hours prior to use.

ELEV 43

NZCI

FLIGHT INFORMATION: AUCKLAND A/G

CHATHAM IS/TUUTA**DEPARTURE**

UNATTENDED: 118.1

Communications

Contact Auckland Radio by telephone or via HF radio for clearance and traffic information prior to departure.

