

ELEV 20

**CLOUDY BAY  
AERODROME**

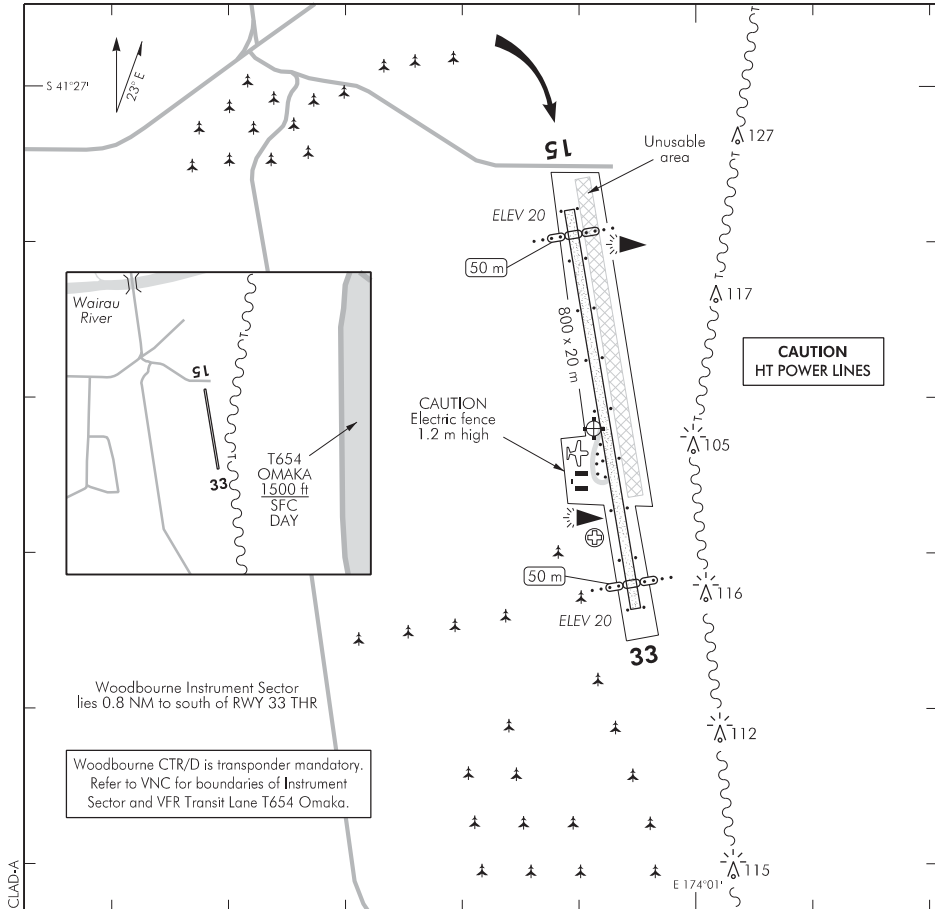
NZCL

NON-CERTIFICATED

WOODBOURNE TOWER: 122.8 118.1

WOODBOURNE ATIS: 126.05

UNATTENDED: 122.8



1. **CAUTION:** High voltage power lines to immediate east of RWY 15/33.
2. Circuit: RWY 15 — Right hand  
RWY 33 — Left hand
3. Recommended circuit altitude 800 ft AMSL.
4. **CAUTION:** Mechanical turbulence in NW conditions. Low level turbulence on approach to RWY 33 due to poplar trees abeam threshold.
5. Aerodrome lies within Woodbourne CTR/D. All operations require a clearance from Woodbourne Tower prior to take-off or before entering the Woodbourne CTR/D.
6. **CAUTION:** Feral deer occasionally stray onto runway at night.
7. Woodbourne CTR Instrument Sector lies 0.8 NM to south of RWY 33 threshold.

S 41 27 22 E 174 00 51\*

**Effective: 30 MAR 17**

© Civil Aviation Authority

**CLOUDY BAY  
AERODROME**

**RWY**

RWY	SFC	Strength	Gp	Slope	ASDA	Take-off distance			LDG DIST
						1:20	1:30	1:40	
15	Gr(f)	ESWL 9080	6	Nil	800	750			750
33	Gr(f)	ESWL 9080	6	Nil	800	750			750

**LIGHTING**

Runway: 15/33 LIL RWY  
RWY edge light spacing — 100 m

Aerodrome: WDI Taxiway: Blue

Aerodrome lighting is individual automatic solar powered LED lighting — progressive activation varies from 7 to 12 min depending on season from ECT to MCT.

Note that the threshold lights give NO approach slope guidance.

HT Power line lighting — Four nearby HT line towers have solar powered floodlighting 2250 lumens activated for five hours after ECT.

Night flying operations strictly subject to prior operator approval. Available for emergency use.

**FACILITIES**

Toilet

Fire extinguisher by hangar

**SUPPLEMENTARY**

Operator: Friends of Cloudy Bay  
147 Chaytors Rd  
RD 3 Marshlands  
Blenheim  
Tel (022) 137 3344 (H24)

Available for general daytime use without the permission of the operator.

Contact the operator for overnight picketing of aircraft.