

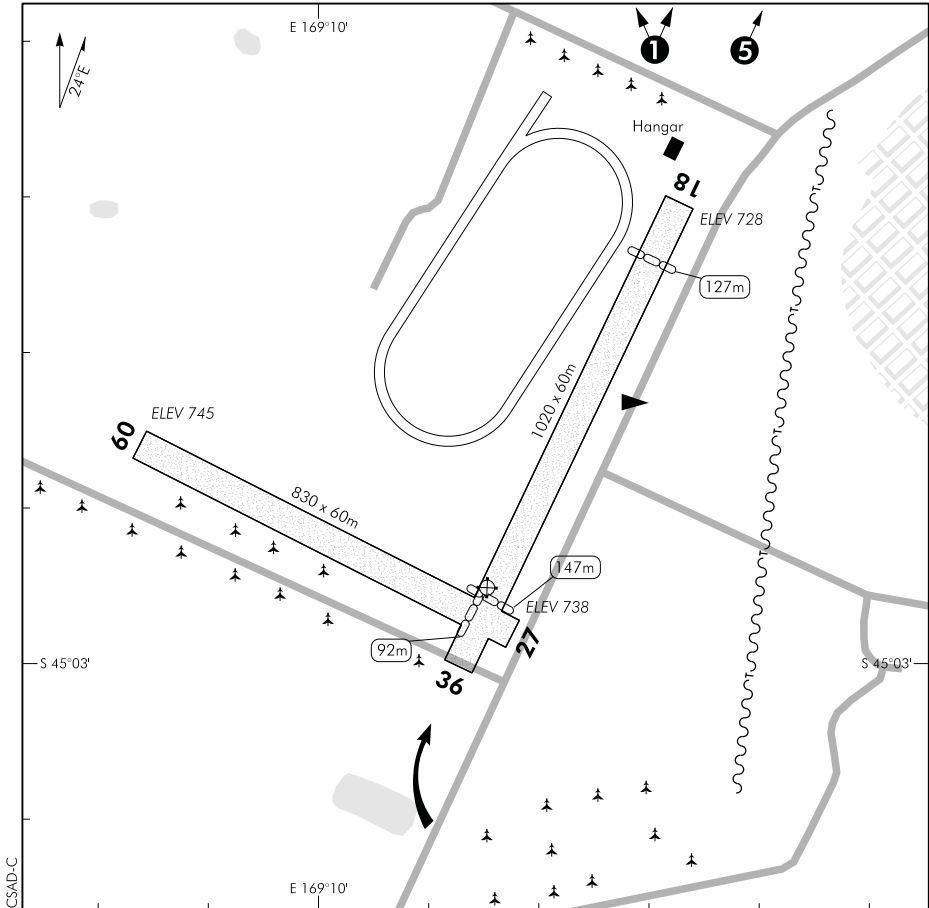
ELEV 745

NZCS

NON-CERTIFICATED

CROMWELL RACECOURSE**AERODROME**

UNATTENDED: 119.1



- ❶ High terrain 0.5NM.
- ❷ Circuit: RWY 18, 27 — Left hand
RWY 36 — Right hand
- ❸ Operational conditions:
RWY 09: Landing prohibited
RWY 27: Take-off prohibited
RWY 36: Turn right 15° as soon as practicable after crossing the end of the runway to avoid high terrain.
- ❹ Runway 18/36 and 09/27 surface undulating — watch for rabbit burrows.
- ❺ CAUTION: Cromwell AD 4NM to north.

S 45 02 55 E 169 10 14

Effective: 23 SEP 10**CROMWELL RACECOURSE**

© Civil Aviation Authority

AERODROME

Non-Certificated Aerodrome 1NM W of Cromwell

**CROMWELL RACECOURSE
OPERATIONAL DATA**

NZCS

RWY

RWY	SFC	Strength	Gp	Slope	ASDA	Take-off distance			LDG DIST
						1:20	1:30	1:40	
09 27	Gr	ESWL 3630	6	0.3D 0.3U	830	738 NU			NU 738
18 36	Gr	ESWL 3630	6	0.3U 0.3D	1020	873 893*			893* 873

* High terrain 0.5NM north of the aerodrome

LIGHTING

Nil

FACILITIES

Nil

SUPPLEMENTARY

Operator: Central Otago District Council, PO Box 122, Alexandra
Tel (03) 440 0056 Fax (03) 448 9196