

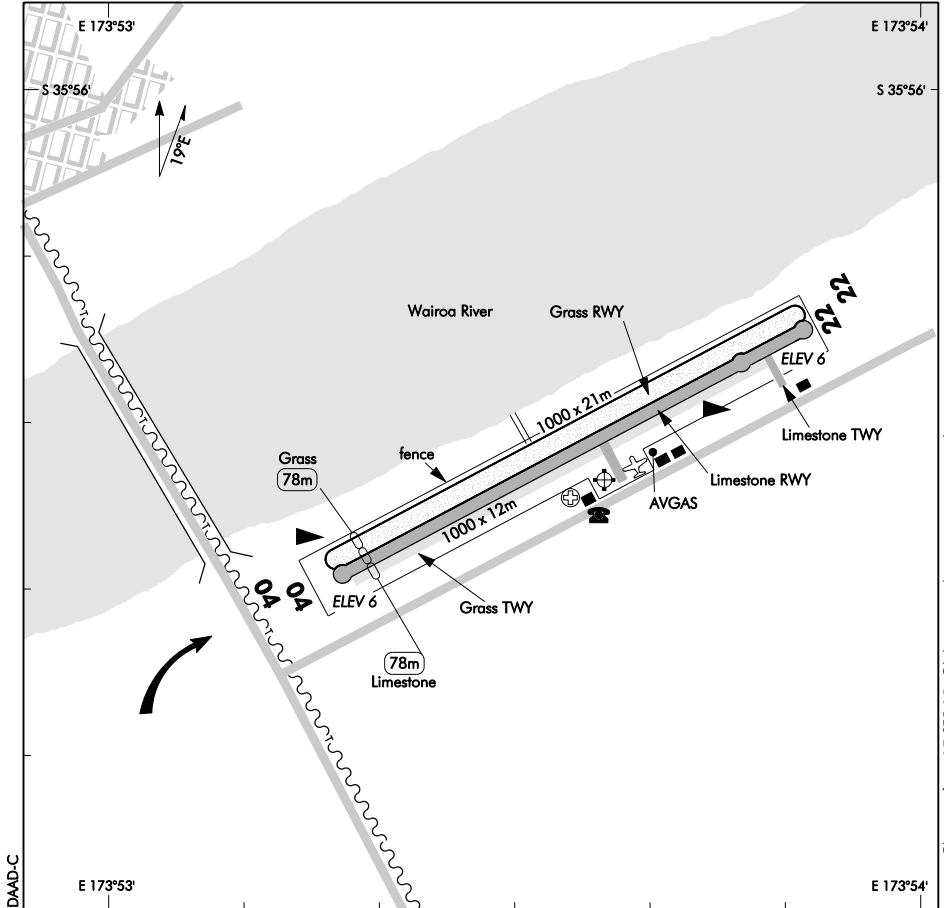
ELEV 6

NZDA

NON-CERTIFICATED

**DARGAVILLE
AERODROME**

UNATTENDED: 119.1



1. Circuit: RWY 04 — Right hand
RWY 22 — Left hand
2. Aircraft movements restricted to prepared surfaces during wet weather.
3. RWY 04/22 Gr closed between last week in May and 1 November due to wet conditions.
4. Gyroplanes frequently in circuit.

D

S 35 56 23 E 173 53 37

Effective: 25 MAY 17

© Civil Aviation Authority

**DARGAVILLE
AERODROME**

Changes from 17 SEP 15: Glider circuit direction note removed.

DARGAVILLE
OPERATIONAL DATA

NZDA

RWY

RWY	SFC	Strength	Gp	Slope	ASDA	Take-off distance			LDG DIST
						1:20	1:30	1:40	
04	*	ESWL 2500	8	Nil	1000	1000			922
22	*	ESWL 2500	8	Nil	1000	922			1000
04	Gr	ESWL 2500	8	Nil	1000	1000			922
22	Gr	ESWL 2500	8	Nil	1000	922			1000

*1000 x 12 m rolled limestone

LIGHTING

Nil

FACILITIES

Fuel: Z Energy, Avgas 100, access via Z Energy card with PIN, opposite aero club.

SUPPLEMENTARY

Operator: Dargaville Aero Club, Hoanga Road, RD 4, Dargaville
 Tel (09) 439 8024 Mobile 027 478 4308
 Email: dargavilleac@callplus.net.nz

Available for general use without the permission of the operator.