

ELEV 4

NZDN

TOWER: 120.7 122.4

ATIS: 126.45

DUNEDIN**ARRIVAL/DEPARTURE**

UNATTENDED: 120.7

Arrival Procedures

From the north:

By day VFR traffic may be operating without reference to Dunedin Tower when within:

- NZT955 (Dunedin City) VFR transit lane (1500 ft);
- NZT958 (Taieri) VFR transit lane (1100 ft)
- NZT959 (Mt Hyde) VFR transit lane (2500 ft)

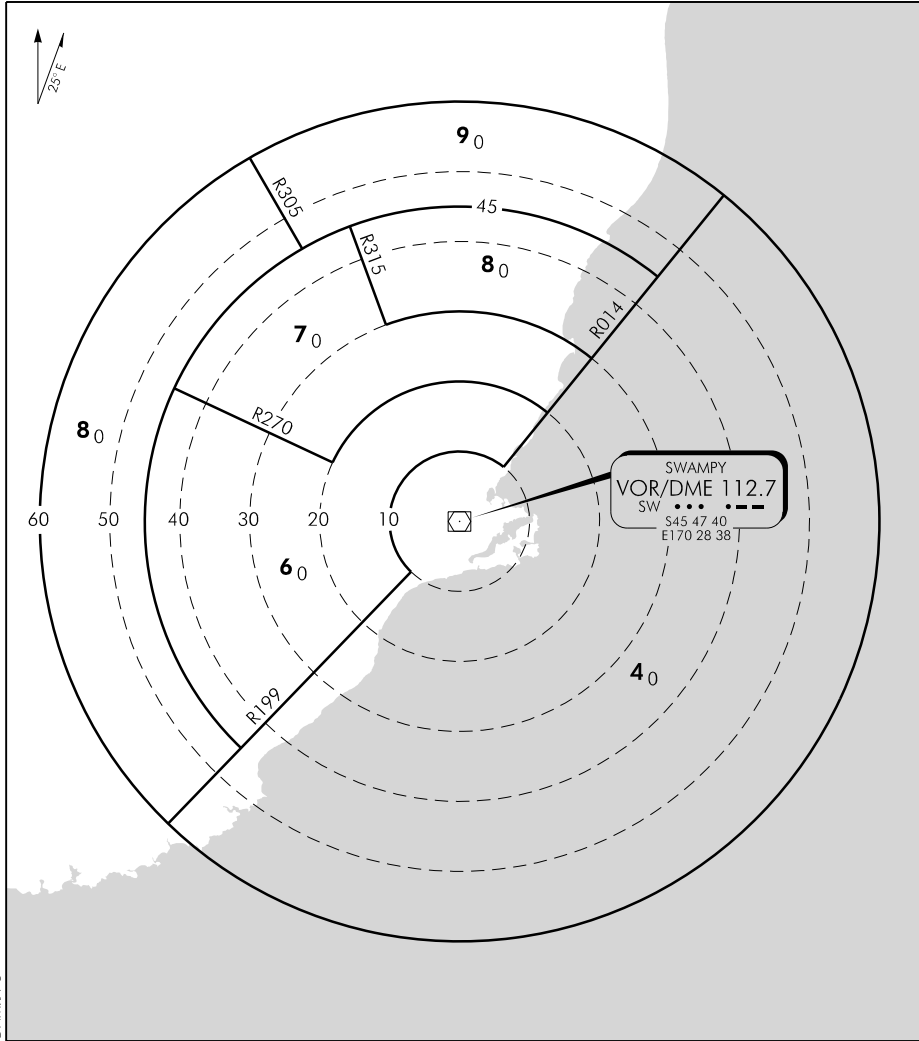
Departure Procedures

Refer Dunedin SIDs.

International Departures

International flights that will leave the NZCC FIR via LIBLA or ADKOS are to cross LIBLA or ADKOS at cleared level or advise ATC if unable.

DUNEDIN (SWAMPY) VOR/DME MRA SECTORS (VORSEC)



DNMRA-C

Changes from 2 SEP 04: Sectors reviewed.

Effective: 13 SEP 18