

ELEV 4

CAT A,B,C,D

DUNEDIN

NZDN

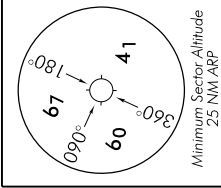
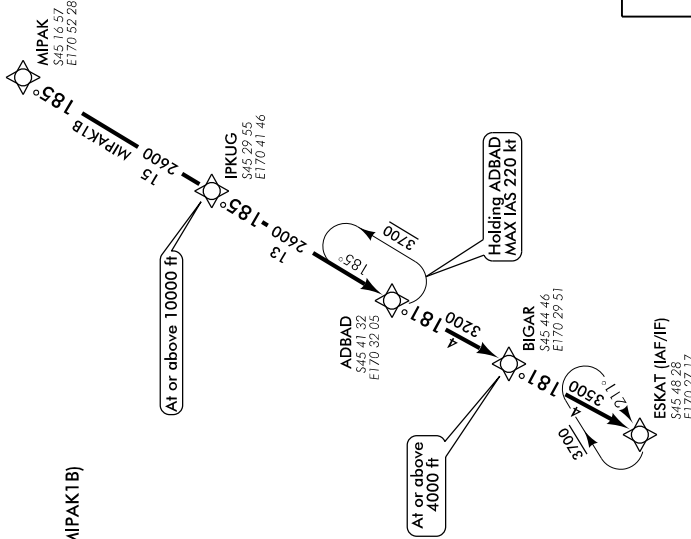
RNAV (GNSS) STAR RWY 21 (1)

TOWER: 120.7 122.4

ATIS: 126.45

UNATTENDED: 120.7

Navigation requirement: RNP 1



NOT TO SCALE

**RWY 21
MIPAK ONE BRAVO ARRIVAL — RNAV (GNSS) (MIPAK1B)**

- Track 185° via IPKUG to ADBAD
- Cross IPKUG at or above 10000 ft
- Track 181° via BIGAR to ESKAT
- Cross BIGAR at or above 4000 ft

DNRNAVSTAR21-1-L-C



Changes from 21 JUL 16: ATIS FREQ amended.

Effective: 10 NOV 16

ELEV 4

CAT A,B,C,D

ZNDZ

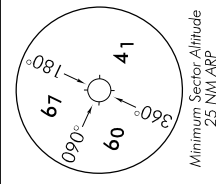
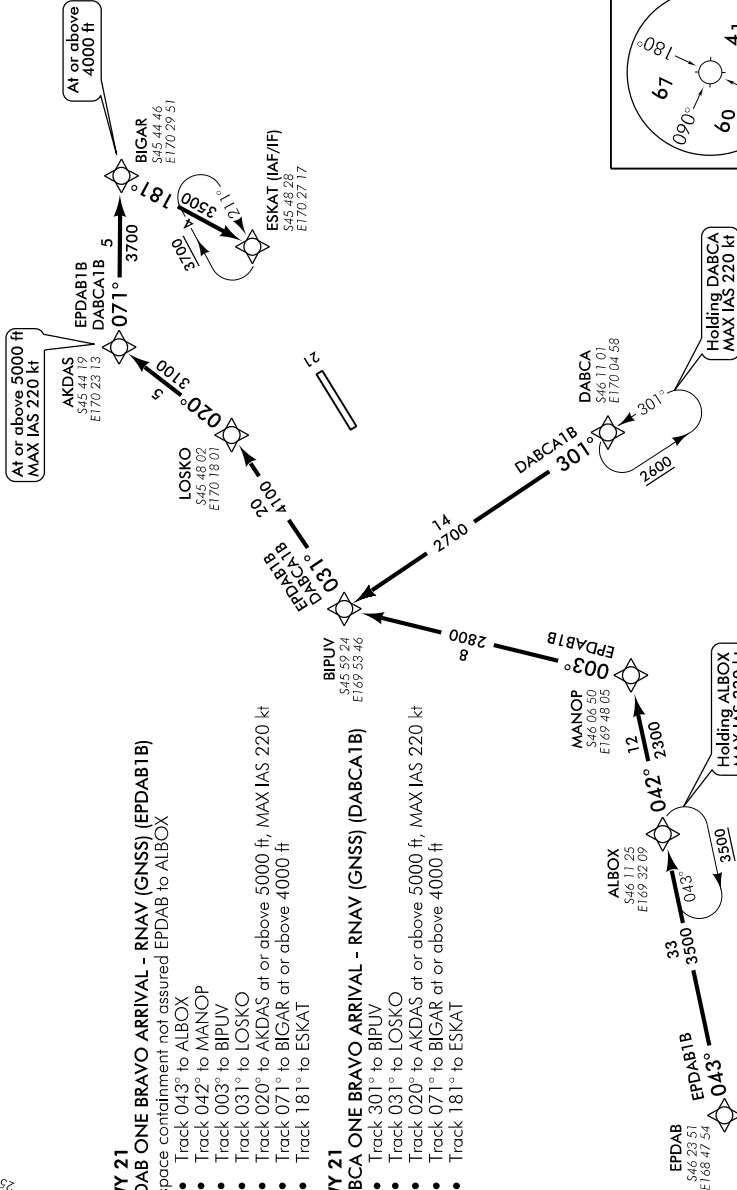
DUNEDIN RNAV (GNSS) STAR RWY 21 (2)

TOWER: 120.7 122.4

ATIS: 126.45

UNATTENDED: 120.7

Navigation requirement: RNP 1



NOT TO SCALE

Changes from 21 JUL 16: ATIS FREQ amended.

DNRNAVSTAR21-2-C

Effective: 10 NOV 16

© Civil Aviation Authority

DUNEDIN RNAV (GNSS) STAR RWY 21 (2)