

ELEV 4

CAT A,B,C,D

DUNEDIN

ZNZD

RNAV (GNSS) STAR RWY 21 (3)

TOWER: 120.7 122.4

ATIS: 126.45

UNATTENDED: 120.7

DNRNAVSTAR21-3-D

Navigation requirement: RNP 1

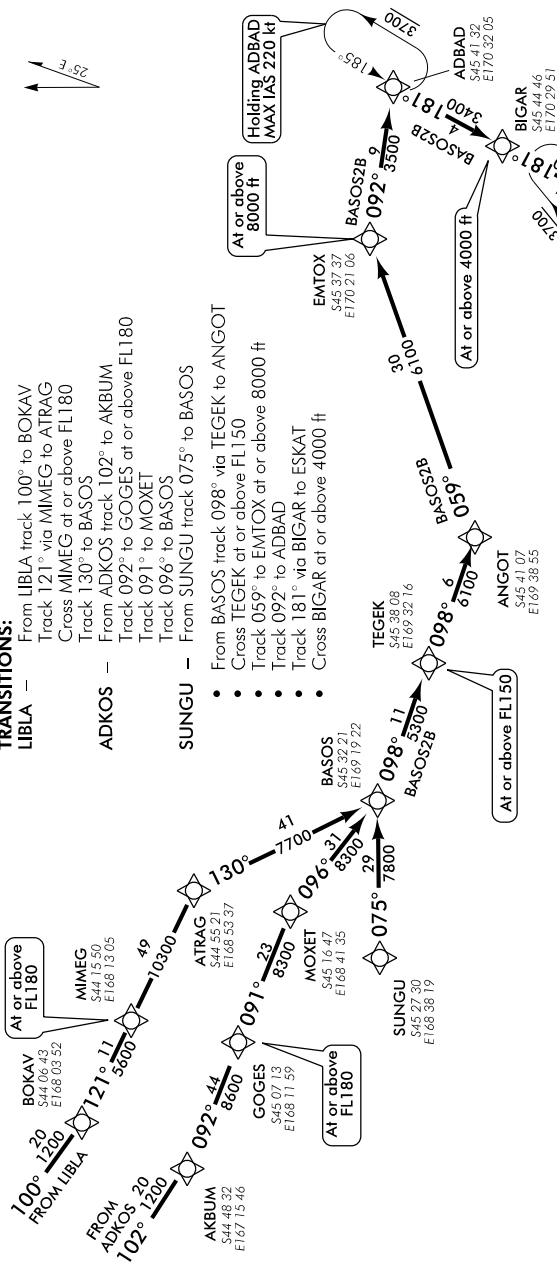
RWY 21
BASOS TWO BRAVO ARRIVAL – RNAV (GNSS) (BASOS2B)

TRANSITIONS:

LIBLA –
From LIBLA track 100° to BOKAV
Track 121° via MIMEG to ATRAG
Cross MIMEG at or above FL180
Track 130° to BASOS

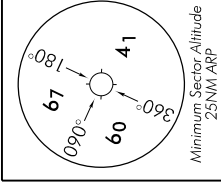
ADKOS –
From ADKOS track 102° to AKBUM
Track 092° to GOGES at or above FL180
Track 091° to MOXET
Track 096° to BASOS

SUNGU – From SUNGU track 075° to BASOS
• From BASOS track 098° via TEGEK to ANGOT
• Cross TEGEK at or above FL150
• Track 059° to EMTOX at or above 8000 ft
• Track 092° to ADBAD
• Track 181° via BIGAR to ESKAT
• Cross BIGAR at or above 4000 ft



Arrivals crossing NZZZ/NZCC FIR BDRY

- Fly the arrival procedure applicable to the RWY in use as per Dunedin ATIS
- At EKODA/MADOK/DADLU/BEBOB contact Christchurch Control 129.3 MHz reporting position, altitude and arrival procedure being flown



NOT TO SCALE

Minimum Sector Altitude
25NM AWP

Changes from 21 JUL 16: ATIS FREQ amended.

ELEV 4

CAT A,B,C,D

NZDN

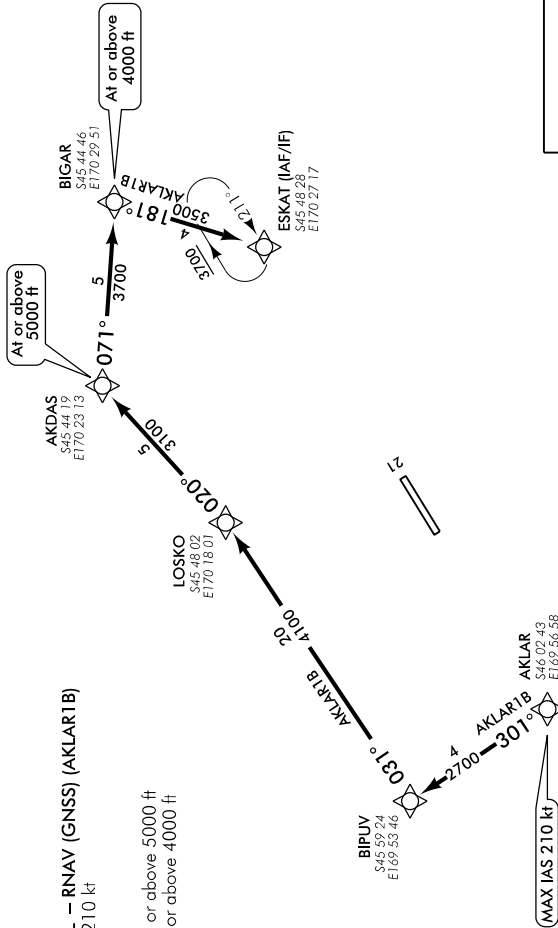
DUNEDIN RNAV (GNSS) STAR RWY 21 (4)

TOWER: 120.7 122.4

ATIS: 126.45

UNATTENDED: 120.7

Navigation requirement: RNP 1



RWY 21 AKLAR ONE BRAVO ARRIVAL – RNAV (GNSS) (AKLAR1B)

- Cross AKLAR, MAX IAS 210 kt
- Track 301° to BIPUV
- Track 031° to LOSKO
- Track 020° to AKDAS at or above 5000 ft
- Track 071° to BIGAR at or above 4000 ft
- Track 181° to ESKAT

(MAX IAS 210 kt)

Changes from 21 JUL 16: ATIS FREQ amended.