

ELEV 4

CAT A,B,C,D

DUNEDIN

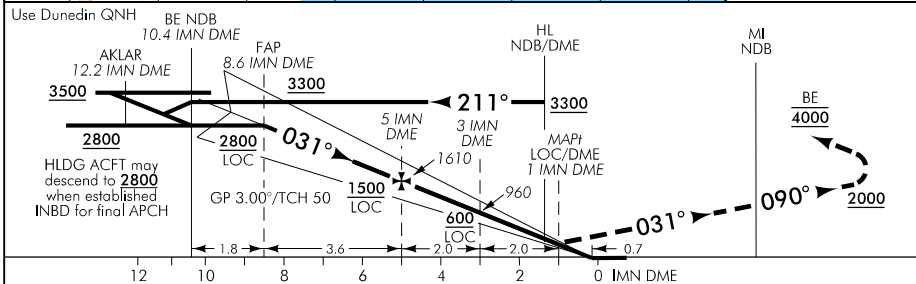
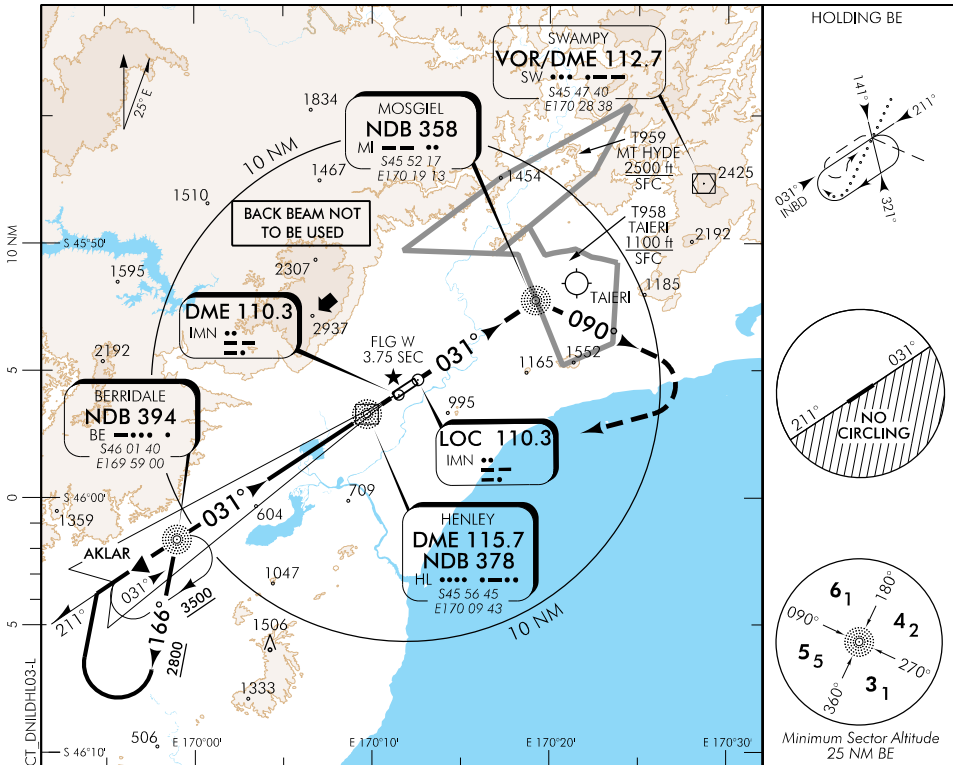
RWY 03 THR ELEV 3

ILS/DME or LOC/DME RWY 03

TOWER: 120.7 122.4

ATIS: 126.45

UNATTENDED: 120.7



MISSED APCH: Track 031° to MI NDB, turn RIGHT track 090° from MI NDB to 2000, turn RIGHT direct to BE NDB 4000

IMN DME DIST	10	9	8	7	6	5	4	3	2	1	0.8
Advisory Altitude 3°	3270	2940	2600	2270	1940	1610	1290	960	640	MDA	DA
Category	A		B			C		D			
ILS/DME	253(250) – 1200										
LOC/DME	330(326) – 1800										
Circling*	430(426) – 1900		790(786) – 2800			NA		NA			

* Circling NA south east of RWY 03/21.

Effective: 9 NOV 17

Changes from 25 MAY 17: HL NDB to BE NDB profile correction.

ELEV 4

CAT A,B,C,D

DUNEDIN

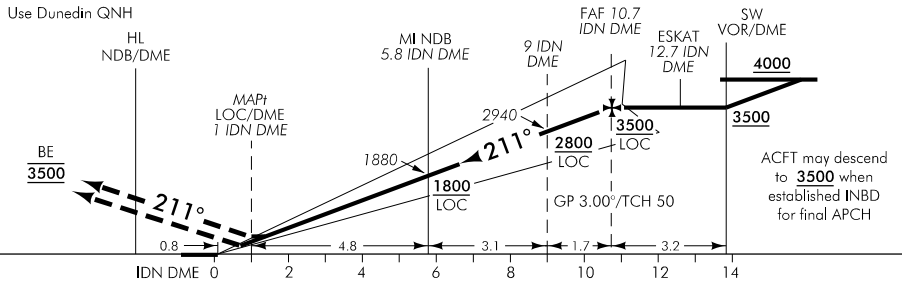
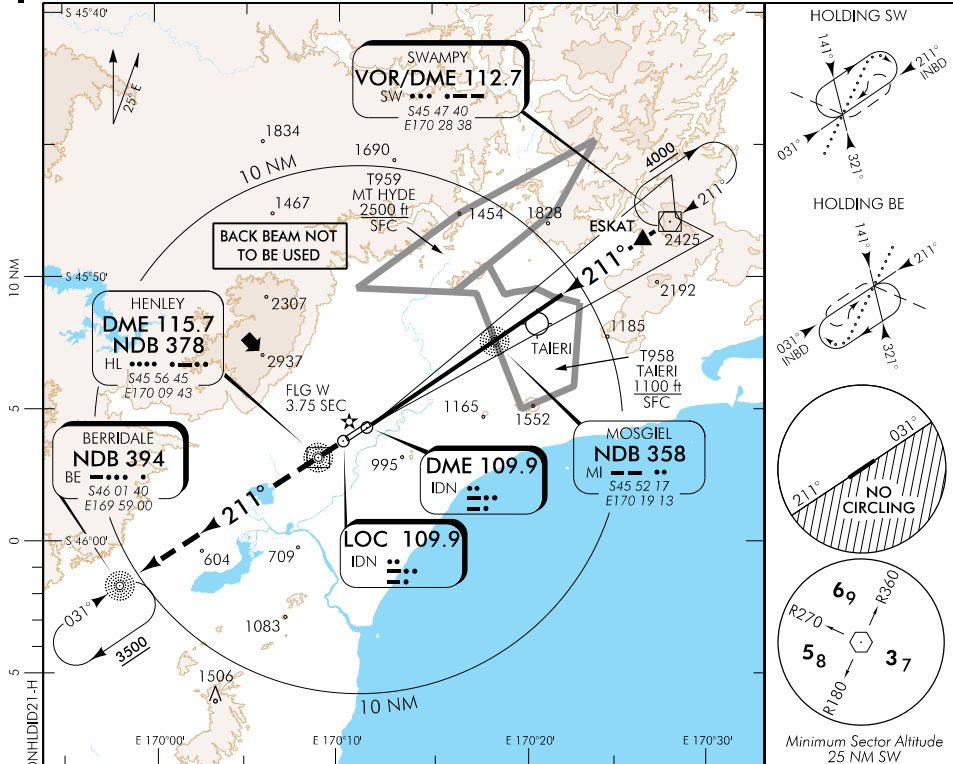
RWY 21 THR ELEV 4

ILS/DME or LOC/DME RWY 21

TOWER: 120.7 122.4

ATIS: 126.45

UNATTENDED: 120.7



MISSED APCH: Track 211° to BE NDB 3500

IDN DME DIST	0.8	1	1.3	2	3	4	5	6	7	8	9	10
Advisory Altitude 3"	DA	320	MDA	640	960	1290	1620	1940	2270	2610	2940	3270
Category	A		B			C			D			
ILS/DME	254(250) - 1200											
LOC/DME	420(416) - 1800											
Circling*	430(426) - 1900			790(786) - 2800			NA			NA		

* Circling NA south east of RWY 03/21.

Changes from 26 MAY 16: ATIS FREQ amended.

Effective: 10 NOV 16