

ELEV 4

CAT A,B,C,D

**DUNEDIN**

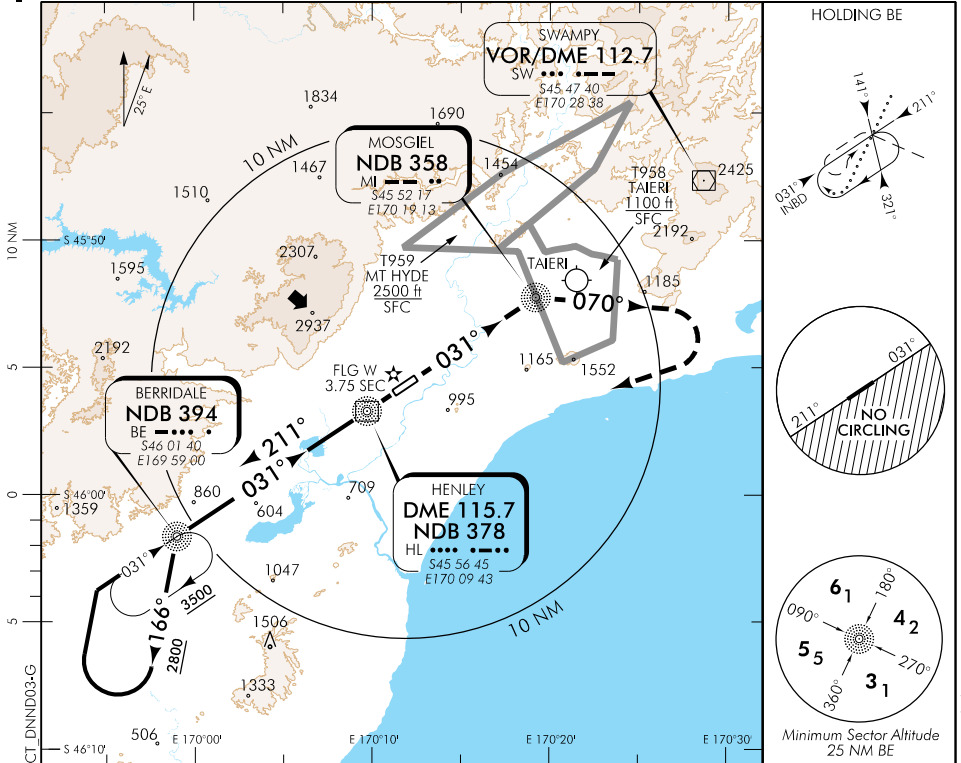
RWY 03 THR ELEV 3

**NDB/DME RWY 03**

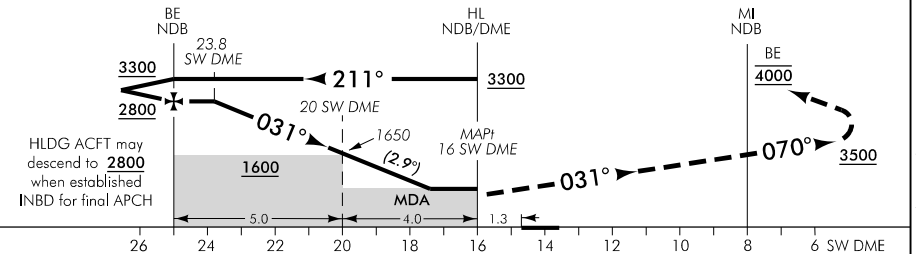
TOWER: 120.7 122.4

ATIS: 126.45

UNATTENDED: 120.7



Use Dunedin QNH



**MISSED APCH:** Track 031° to MI NDB, turn RIGHT track 070° to 3500, turn RIGHT direct to BE NDB 4000

SW DME DIST	25	24	23	22	21	20	19	18	17.4	MAPI HL
Advisory Altitude 5%	3150	2850	2550	2250	1950	1650	1350	1050	MDA	MDA
Category	A				B			C		D
NDB/DME #	840(836) - 5						880(876) - 5			
# When HL NDB is not available MAPI 16 SW DME may be used provided all MDA are increased by 110 ft										
Circling*	840(836) - 5						NA			
* Circling NA south east of RWY 03/21.										

**Effective: 10 NOV 16**

Changes from 26 MAY 16: ATIS FREQ amended.

ELEV 4

CAT A,B,C,D

**DUNEDIN**

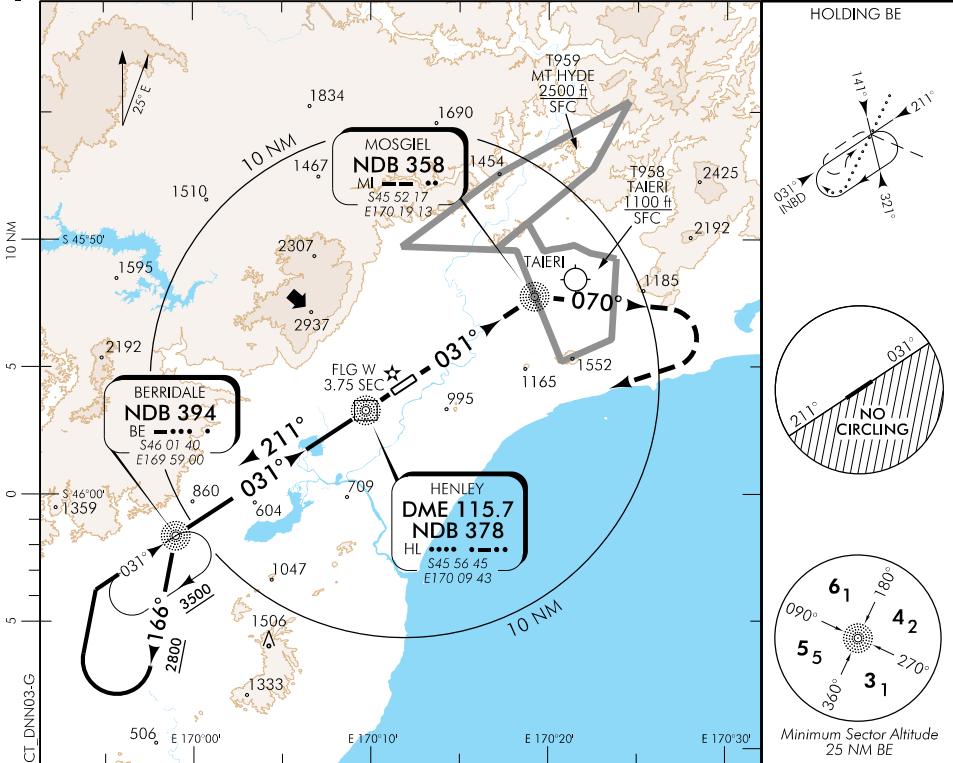
RWY 03 THR ELEV 3

**NDB RWY 03**

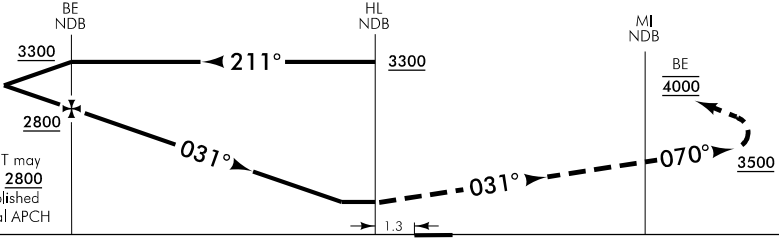
TOWER: 120.7 122.4

ATIS: 126.45

UNATTENDED: 120.7



Use Dunedin QNH



**MISSED APCH:** Track 031° to MI NDB, turn RIGHT track 070° to 3500, turn RIGHT direct to BE NDB 4000

Category	A	B	C	D
NDB		1320(1316) - 5		
Circling*	1320(1316) - 5		NA	

\* Circling NA south east of RWY 03/21.

Changes from 26 MAY 16: ATIS FREQ amended.

**Effective: 10 NOV 16**