

ELEV 4

CAT A,B,C,D

DUNEDIN

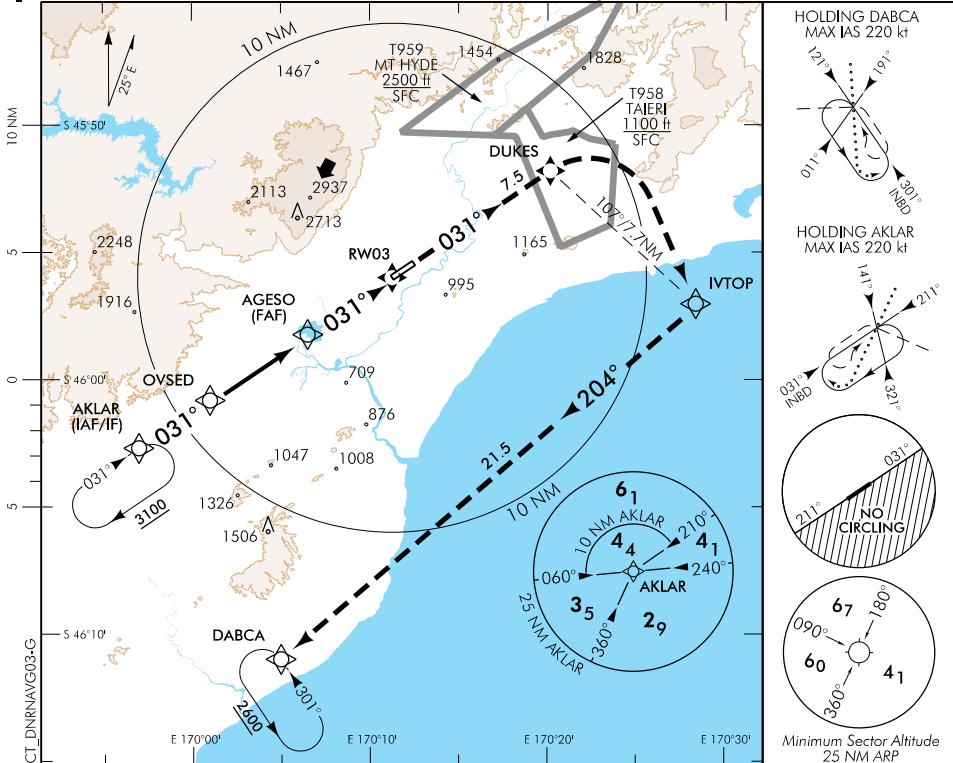
RWY 03 THR ELEV 3

RNAV (GNSS) RWY 03

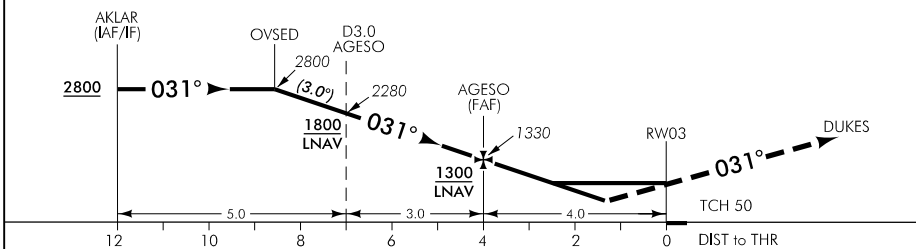
TOWER: 120.7 122.4

ATIS: 126.45

UNATTENDED: 120.7



Use Dunedin QNH



MISSED APCH: Track 031° to DUKES (fly-over), turn RIGHT direct to IVTOP MAX IAS 210 kt, turn RIGHT track 204° to DABCA 4000

DISTANCE to WPT	2	1	OVSED	4	3	2	1	AGESO	3	2.7	2	1.3	RW03
Advisory Altitude 3°	3440	3120	2800	2600	2280	1960	1650	1330	1010	MDA	690	DA	MDA
Category	A			B			C			D			
LNAV/MNAV*	460(457) - 1500						460(457) - 2000						
LNAV	920(916) - 3100						920(916) - 4800						
Circling #	920(916) - 3100			920(916) - 3100			NA			NA			

* Valid to AD temperature -10°C. Use of remote QNH NA.
Circling NA south east of RWY 03/21.

Effective: 10 NOV 16

Changes from 26 MAY 16: ATIS FREQ amended.

ELEV 4

CAT A,B,C,D

DUNEDIN

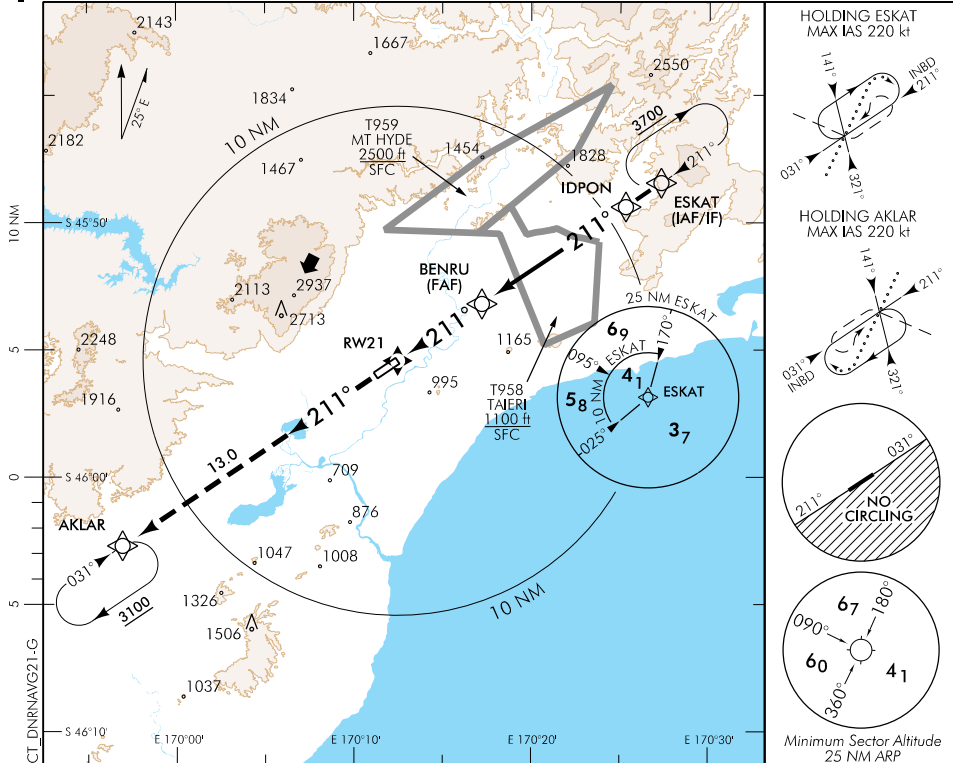
RWY 21 THR ELEV 4

RNAV (GNSS) RWY 21

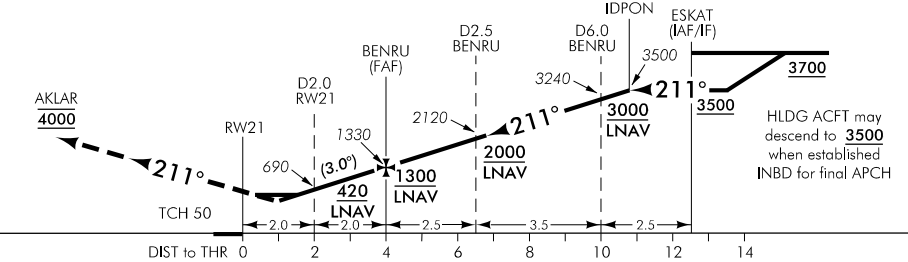
TOWER: 120.7 122.4

ATIS: 126.45

UNATTENDED: 120.7



Use Dunedin QNH



MISSED APCH: Track 211° to AKLAR **4000**

DISTANCE TO WPT	RWY21	1	2	3	BENRU	1	2	3	4	5	6
Advisory Altitude 3°	MDA	DA/MDA	690	1010	1330	1650	1960	2280	2600	2920	3240
Category	A			B			C		D		
LNAV/VNAV *	350(346) – 1500						350(346) – 1600				
LNAV	360(356) – 1500						360(356) – 1600				
Circling #	430(426) – 1900			790(786) – 2800			NA		NA		

* Valid to AD temperature -10°C. Use of remote QNH NA.
 # Circling NA south east of RWY 03/21.

Changes from 26 MAY 16: ATIS FREQ amended.

Effective: 10 NOV 16