

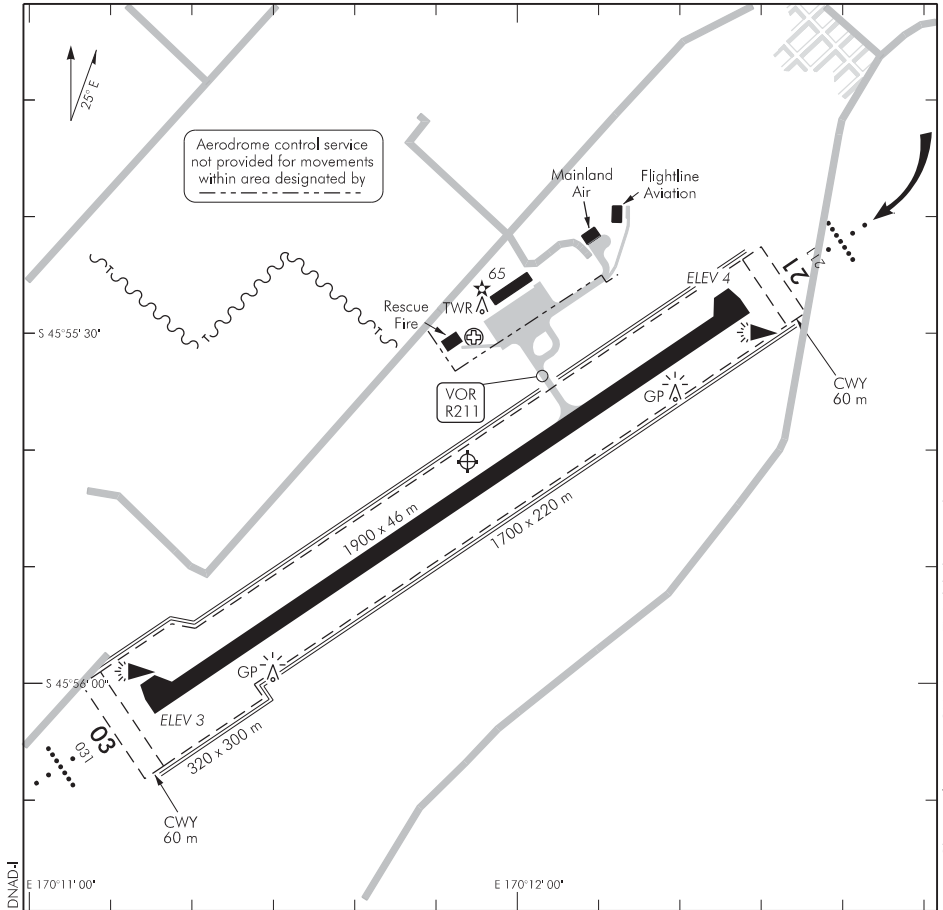
ELEV 4

NZDN

TOWER: 120.7 122.4

ATIS: 126.45

UNATTENDED: 120.7

**DUNEDIN
AERODROME**

1. Circuit: Left hand — RWY 03
Right hand — RWY 21

When ATC is on watch, unless otherwise instructed, circuit altitude is 1000 ft AMSL.

2. All aircraft movements are to be confined to sealed areas.
3. **CAUTION:** Bird hazard. Plovers continually present, gulls present in inclement weather. Oystercatchers occasionally present.
4. All jet aircraft Code C and above must use the turning nodes at RWY 03/21 thresholds for turning.
5. Loop taxiway restricted to B737-800/A320-200 size aircraft and below.

S 45 55 41 E 170 11 54

Effective: 19 JUL 18

© Civil Aviation Authority

**DUNEDIN
AERODROME**

DUNEDIN

OPERATIONAL DATA (1)

NZDN

RWY

RWY	SFC	Strength	Gp	Slope	ASDA	Take-off distance			LDG DIST
						1:40	1:50	1:62.5	
03 21	B	PCN 60/F/D/W/T	8	Nil	1900	1960 1960	1960 1960	1960 ¹ 1960 ²	1900 1900

Note:

¹ RWY 03 TODA @ 1:62.5 applies to curved flight path. Turn commences @ 10462 m from origin and follows true bearing 108° on a 2450 m radius or 1050 radius of turn. Due to obstacle outside Obstacle Limitation Surface.

² RWY 21 TODA @ 1:62.5 applies to curved flight path. Turn commences @ Henley NDB and follows true bearing 226°. Due to critical obstacle.

RESA: RWY 03 RESA 240 x 150 m
RWY 21 RESA 240 x 150 m

Critical Obstacles

RWY	Obstacle	Distance from SOT (m)	Height (ft) AMSL
21	Pylon	15658	748

MINIMA

IFR Take-off		
RWY	Day	Night
03 ¹	1300-3000	1300-5
21 ¹	700-3000	1000-5
03 ²	700-3000	1000-5
21 ³	1300-3000	1300-5

¹ Reduced take-off minima available during TWR HR — not below 0-400. OPS below 800 metres visibility subject to availability of serviceable secondary power supply and automatic switch-over.

² Visual circuit after take-off and departure via HL NDB.

³ Visual circuit after take-off and departure via MI NDB.

LIGHTING

Runway: 03/21 LIL ALS/2 bar; PAPI 3.0°/TCH 58; LIH RWY
 Aerodrome: ABN FLG W 2.5 SEC WDI
 Taxiway: CL RWY 03 & 21 turning nodes: edge
 Apron: Edge, floodlighting

Road traffic lighting system, approach RWY 21 A/FLG R

For remote control of aerodrome lighting contact Dunedin International Airport Ltd
 Tel (03) 486 2879 (24 HR) or (03) 358 1694.

Standby power available.