

ELEV 4

NZDN

TOWER: 120.7 122.4

ATIS: 126.45

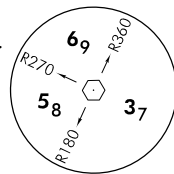
DUNEDIN
DEPARTURE (1)
UNATTENDED: 120.7

Outside Dunedin Tower hours contact Christchurch Control 129.3 MHz for clearance and traffic information prior to entering IMC or controlled airspace.

Departure procedures

Minimum net climb gradient 3.3% (200 ft/NM) unless higher stated

Caution: T958 Taieri SFC to 1100 ft – Refer graphic below.



Minimum Sector Altitude
25 NM SW

Take-off RWY 03

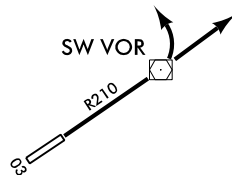
By Day: Aircraft departing RWY 03 and climbing on specified minimum net climb gradient may not be contained within controlled airspace. To ensure controlled airspace containment aircraft are required to climb at 8.6% (530 ft/NM) to 2000 ft

SWAMPY SEVEN Departure

To QN, LX, BIDEL, MIPAK, MEGUG

Minimum net climb gradient 4.0% (250 ft/NM) to 3200 ft

- Track R210 to SW VOR, intercept track

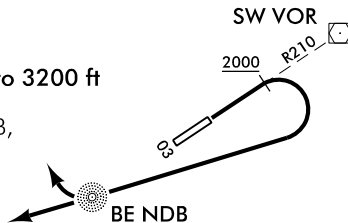


SOUTH FOUR Departure

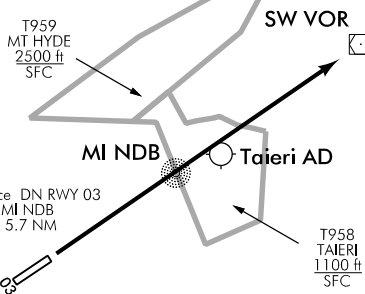
To BIMAX, LX

Minimum net climb gradient 4.0% (250 ft/NM) to 3200 ft

- Track R210 to SW VOR
- At MNM 2000 ft turn RIGHT direct to BE NDB, intercept track



DNSID03-21-1



Changes from 12 NOV 15: ATIS FREQ amended.

ELEV 4

NZDN

TOWER: 120.7 122.4

ATIS: 126.45

DUNEDIN
DEPARTURE (2)
 UNATTENDED: 120.7

Departure procedures

Take-off RWY 21

CAUTION: *Close-in obstacles not considered in the climb gradient*

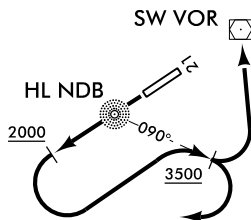
Trees: 80 ft AMSL, 181°/537 m from CWY END

OCEAN FIVE Departure

To SW VOR, BIMAX

Minimum net climb gradient 3.4% (210 ft/NM) to 2000 ft

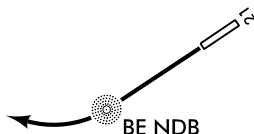
- Maintain RWY centreline to MNM 2000 ft
- Turn LEFT track 090° from HL NDB
- Once established on 090° at MNM 3500 ft, intercept track



BERRIDALE FOUR ALFA Departure

To BIMAX

- Track to BE NDB, intercept track

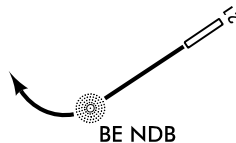


BERRIDALE FIVE BRAVO Departure

To LX

Minimum net climb gradient 4.5%
 (280 ft/NM) to 4000 ft

- Track to BE NDB
- At BE NDB turn RIGHT intercept track



Changes from 17 SEP 15: ATIS FREQ amended.

DNSID21.1