

ELEV 4

CAT A,B,C,D

DUNEDIN

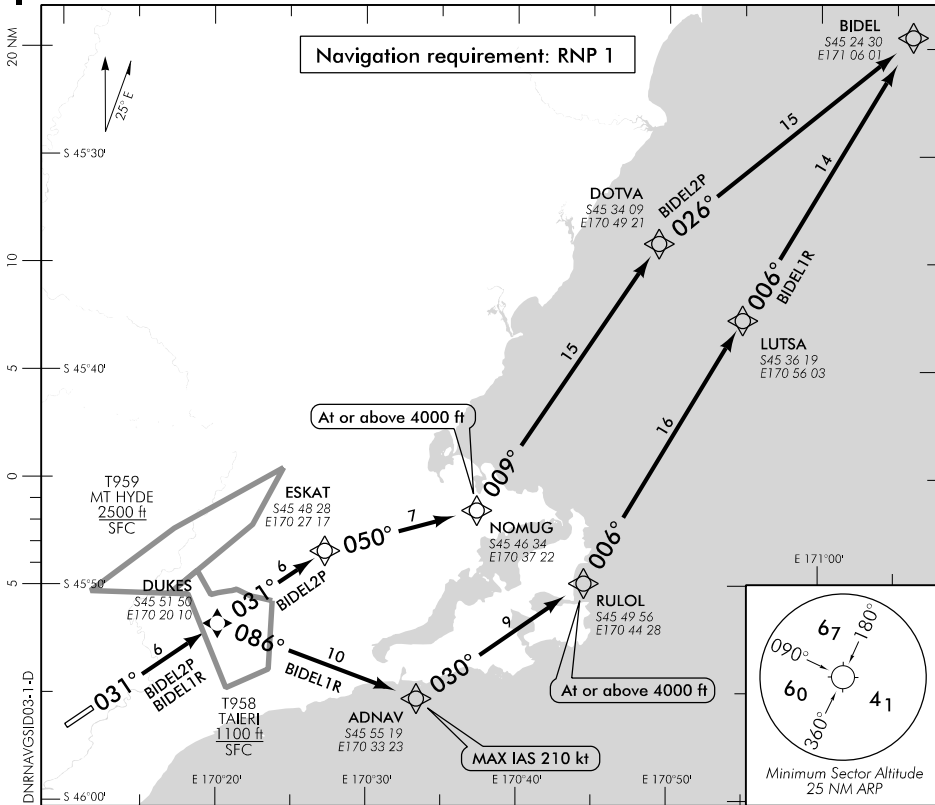
NZDN

RNAV (GNSS) SID RWY 03 (1)

TOWER: 120.7 122.4

ATIS: 126.45

UNATTENDED: 120.7



Changes from 21 JUL 16: ATIS FREQ amended.

ALL DEPARTURES

Note 1. Minimum net climb gradient 3.3% (200 ft/NM) unless higher stated.

RWY 03

BIDEL TWO PAPA DEPARTURE – RNAV (GNSS) (BIDEL2P)

Minimum net climb gradient 3.9% (240 ft/NM) to 3000 ft

- Track 031° via DUKES (fly-over) to ESKAT
- Turn RIGHT, track 050° to NOMUG at or above 4000 ft
- Turn LEFT, track 009° to DOTVA
- Turn RIGHT, track 026° to BIDEL

ATC may require hold down at or above 4000 ft

BIDEL ONE ROMEO DEPARTURE – RNAV (GNSS) (BIDEL1R)

- Track 031° to DUKES (fly-over)
- Turn RIGHT, track 086° to ADNAV, MAX IAS 210 kt
- Turn LEFT, track 030° to RULOL at or above 4000 ft
- Turn LEFT, track 006° via LUTSA to BIDEL

ATC may require hold down at or above 4000 ft

Effective: 10 NOV 16

ELEV 4

CAT A,B,C,D

DUNEDIN

NZDN

RNAV (GNSS) SID RWY 03 (2)

TOWER: 120.7 122.4

ATIS: 126.45

UNATTENDED: 120.7

ALL DEPARTURES

Note 1. Minimum net climb gradient 3.3% (200 ft/NM) unless higher stated.

RWY 03

BASOS TWO PAPA DEPARTURE – RNAV (GNSS) (BASOS2P)

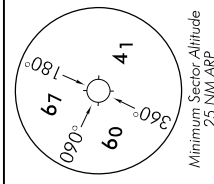
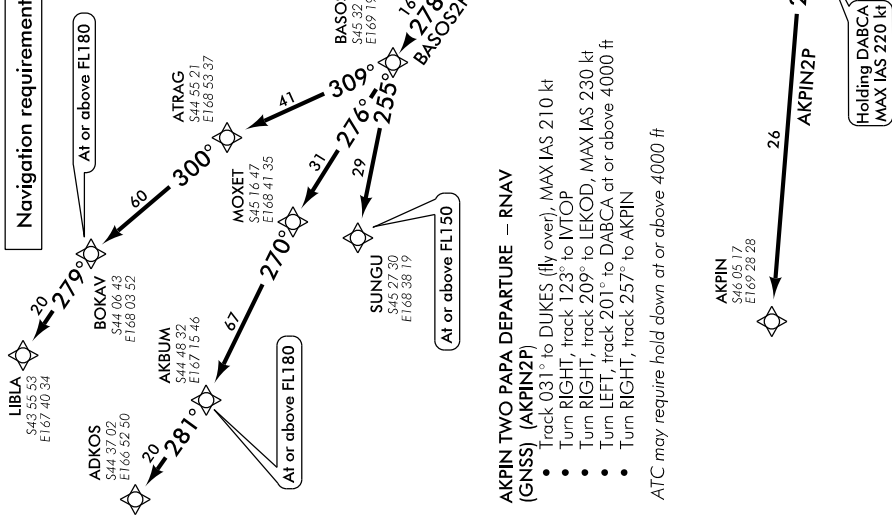
MNM net climb gradient 3.5% (220 ft/NM) to 5000 ft

- Track 031° to DUKES (fly over), MAX IAS 210 kt
- Turn RIGHT, track 123° to VTOPT
- Turn RIGHT, track 209° to LEKOD, MAX IAS 230 kt
- Turn RIGHT, track 300° to KADSU
- Turn LEFT, track 273° to ANGOT
- Turn RIGHT, track 278° to BASOS

TRANSITIONS

- LIBLA**
- From BASOS turn RIGHT, track 309° to ATRAG
 - Turn LEFT, track 300° to BOKAV at or above FL180
 - Turn LEFT, track 279° to LIBLA
- ADKOS**
- From BASOS track 276° to MOXET
 - Turn LEFT, track 270° to AKBUM at or above FL180
 - Turn RIGHT, track 281° to ADKOS
- SUNGU**
- From BASOS turn LEFT, track 255° to SUNGU at or above FL150

Navigation requirement: RNP 1



Changes from 10 NOV 16: ANLAP WPT replaced by LEKOD.