

ELEV 4

CAT A,B,C

**DUNEDIN**

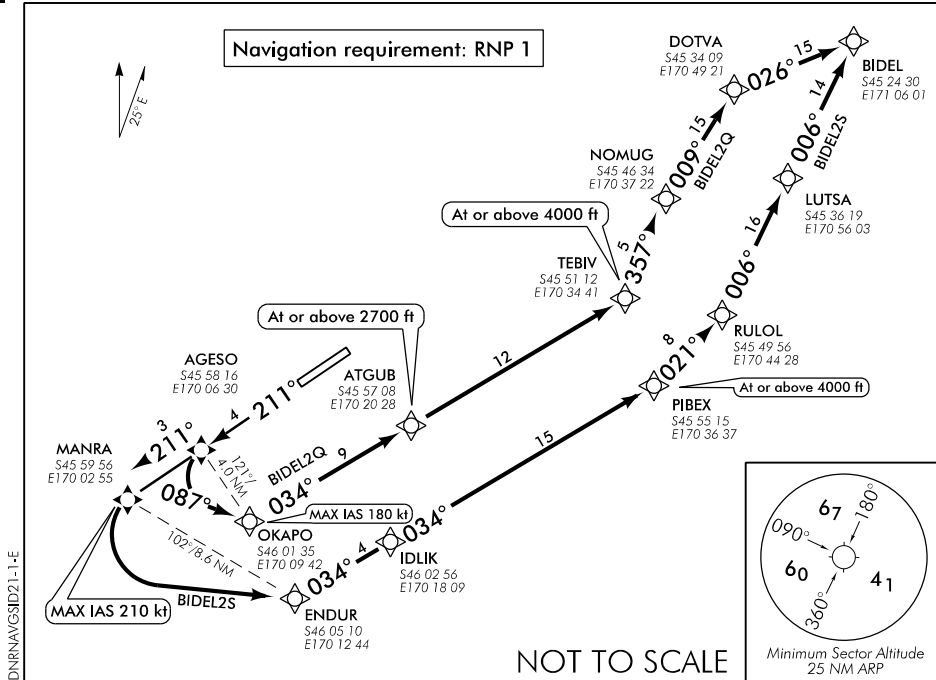
NZDN

**RNAV (GNSS) SID RWY 21 (1)**

TOWER: 120.7 122.4

ATIS: 126.45

UNATTENDED: 120.7



**ALL DEPARTURES**

Note 1. Minimum net climb gradient 3.3% (200 ft/NM) unless higher stated.

**RWY 21**

**BIDEL TWO QUEBEC DEPARTURE – RNAV (GNSS) (BIDEL2Q)**

Minimum net climb gradient 3.8% (230 ft/NM) to 1600 ft.

- Track 211° to AGESO (fly-over)
- Turn LEFT, track 087° to OKAPO, MAX IAS 180 kt
- Turn LEFT, track 034° via ATGUB to TEBIV
- Cross ATGUB at or above 2700 ft
- Cross TEBIV at or above 4000 ft
- Turn LEFT, track 357° to NOMUG
- Turn RIGHT, track 009° to DOTVA
- Turn RIGHT, track 026° to BIDEL

ATC may require hold down at or above 4000 ft  
On request Visual Departure to ATGUB may be available

**BIDEL TWO SIERRA DEPARTURE – RNAV (GNSS) (BIDEL2S)**

- Track 211° via AGESO (fly-over), to MANRA (fly-over), MAX IAS 210 kt
- Turn LEFT, track direct to ENDUR
- Track 034° via IDLIK to PIBEX
- Cross PIBEX at or above 4000 ft
- Turn LEFT, track 021° to RULOL
- Turn LEFT, track 006° via LUTSA to BIDEL

ATC may require hold down at or above 4000 ft

ELEV 4

CAT A,B,C,D

# DUNEDIN

ZNDZ

## RNAV (GNSS) SID RWY 21 (2)

TOWER: 120.7 122.4

ATIS: 126.45

UNATTENDED: 120.7

### ALL DEPARTURES

Note 1. Minimum net climb gradient 3.3% (200 ft/NM) unless higher stated.

### RWY 21

**BASOS ONE QUEBEC DEPARTURE – RNAV (GNSS) (BASOS1Q)**  
MNM net climb gradient 4.2% (260 ft/NM) to 4800 ft  
MNM net climb gradient 6.4% (390 ft/NM) to FL150  
to ensure controlled airspace containment

- Track 211° to AKLAR
- Turn RIGHT, track 304° to ANGOT
- Turn LEFT, track 278° to BASOS

### TRANSITIONS

#### LIBLA

- From BASOS turn RIGHT, track 309° to ATRAG
- Turn LEFT, track 300° to BOKAV at or above FL180
- Turn LEFT, track 279° to LIBLA

#### ADKOS

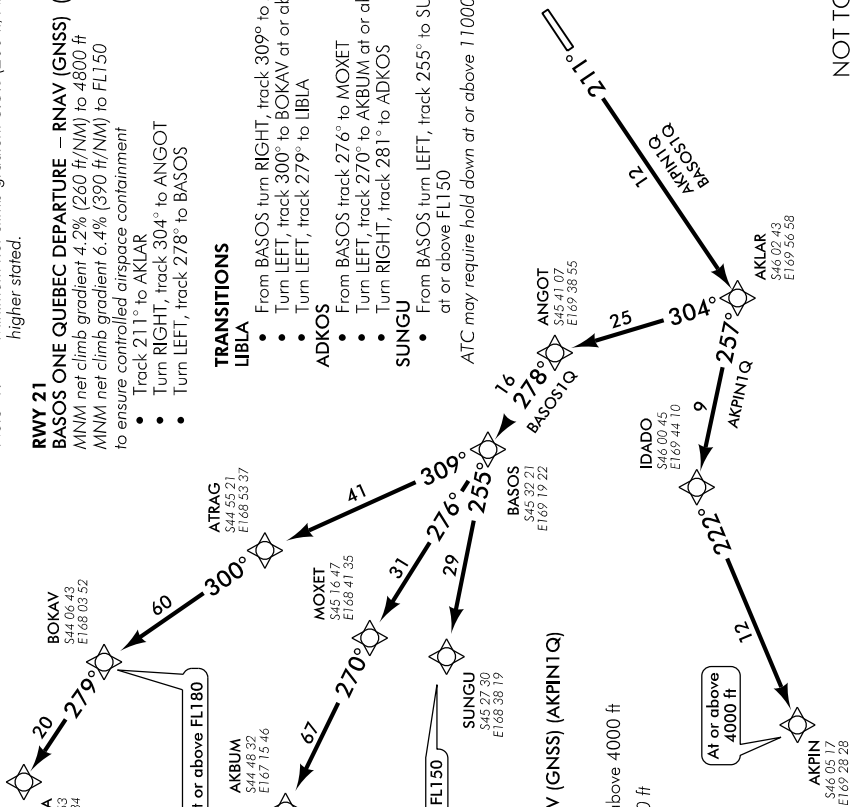
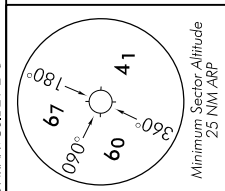
- From BASOS track 276° to MOXET
- Turn LEFT, track 270° to AKBUM at or above FL180
- Turn RIGHT, track 281° to ADKOS

#### SUNGU

- From BASOS turn LEFT, track 255° to SUNGU at or above FL150

ATC may require hold down at or above 11000 ft

Navigation requirement: RNP 1



### RWY 21

#### AKPIN ONE QUEBEC DEPARTURE – RNAV (GNSS) (AKPIN1Q)

- Track 211° to AKLAR
- Turn RIGHT, track 257° to IDADO
- Turn LEFT, track 222° to AKPIN at or above 4000 ft

ATC may require hold down at or above 4000 ft

NOT TO SCALE

Changes from 23 JUL 15: ATIS FREQ amended.