

ELEV 4

CAT A,B,C,D

**DUNEDIN**

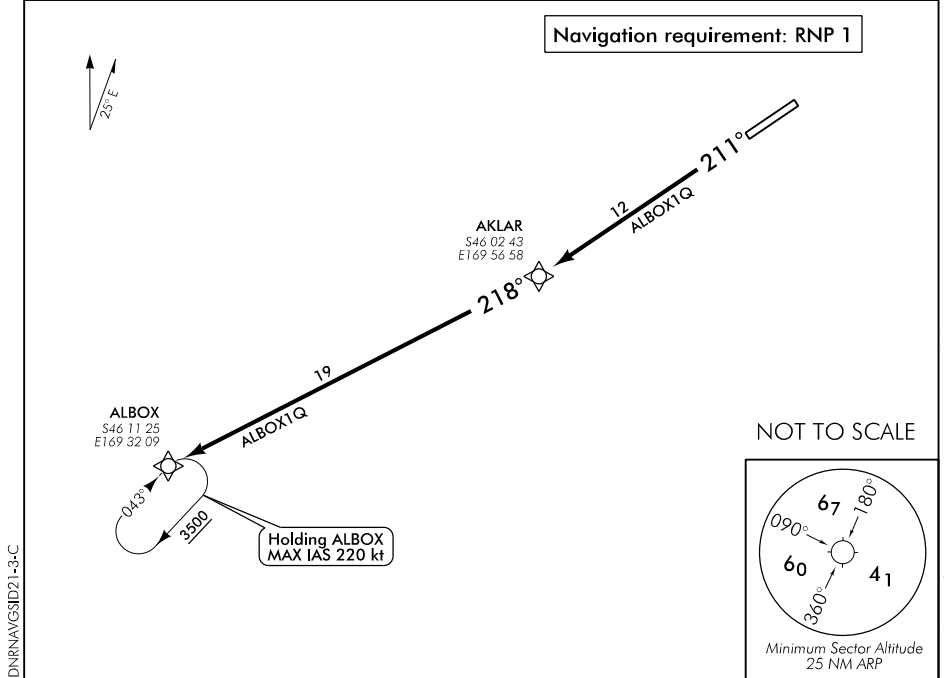
NZDN

**RNAV (GNSS) SID RWY 21 (3)**

TOWER: 120.7 122.4

ATIS: 126.45

UNATTENDED: 120.7



**ALL DEPARTURES**

Note 1. Minimum net climb gradient 3.3% (200 ft/NM) unless higher stated.

**RWY 21**

**ALBOX ONE QUEBEC DEPARTURE – RNAV (GNSS) (ALBOX1Q)**

- Track 211° to AKLAR
- Turn RIGHT, track 218° to ALBOX

ATC may require hold down at or above 4000 ft

