

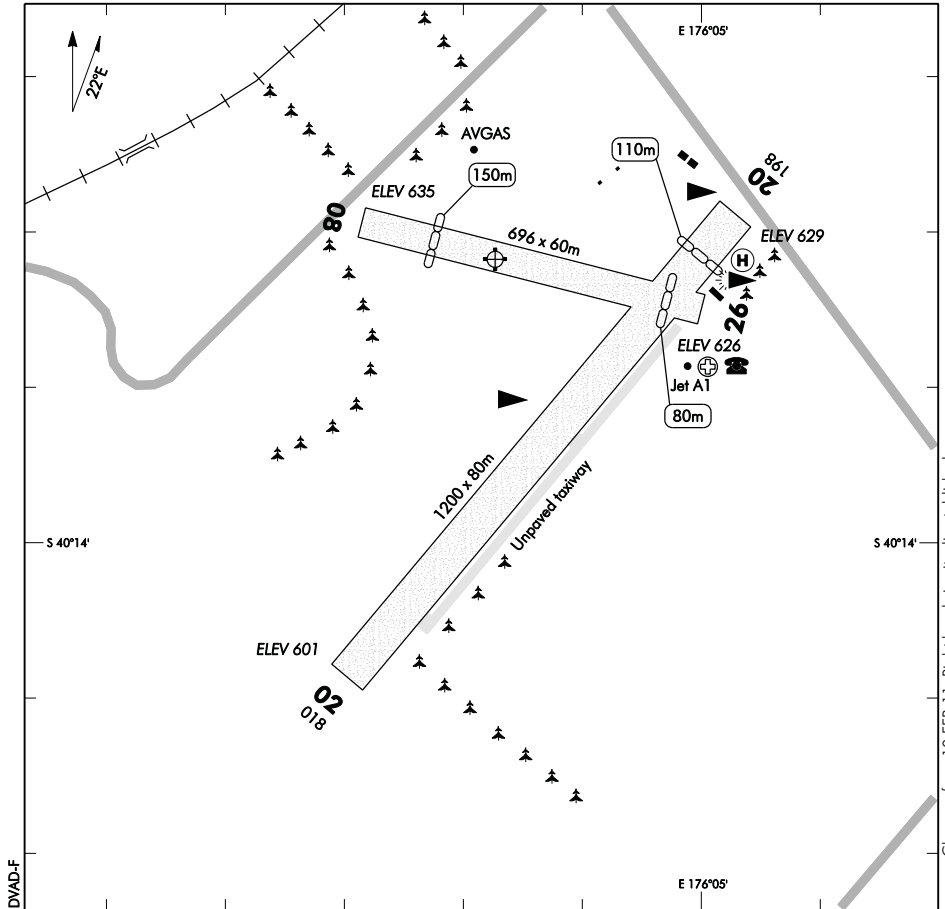
ELEV 635

NZDV

NON-CERTIFICATED

**DANNEVIRKE
AERODROME**

UNATTENDED: 119.1

**D**

1. **CAUTION:** Vehicles cross runway, approximately 150m from threshold RWY 02, without warning.
2. RWY 20 take-off flightpath turn 10° right at end of take-off distance.
3. Hay cropped in areas other than runways.
4. **CAUTION:** Blowcarts (land yachts) may be operating, particularly on weekends and public holidays. Blowcarts will vacate as required.
5. **CAUTION:** Mowing of runways and operational areas may take place at any time.
6. Concrete helipad available for emergency rescue helicopters only.

S 40 13 42 E 176 04 43*

Effective: 31 MAY 12

© Civil Aviation Authority

**DANNEVIRKE
AERODROME**

Changes from 10 FEB 11: Right hand circuits disestablished.

NZDV

RWY

RWY	SFC	Strength	Gp	Slope	ASDA	Take-off distance		LDG DIST
						1:20	1:30	
02 20	Gr(f)	ESWL 8000	8	0.56U 0.56D	1200		1090 1200	1200 1090
08 08	Gr(f)	ESWL 3630	4 3	0.50D	696	616		546
26 26	Gr(f)	ESWL 3630	3 4	0.50U	696	546		616

LIGHTING

Helipad TLOF: blue

Helipad WDI only

FACILITIES

Fuel: Air BP Jet A1, Access via Swipecard, Adjacent to access road south of Flying School hangar.
Air BP, Avgas 100, Access via Swipecard, NW corner of airfield

SUPPLEMENTARY

Operator: Tararua District Council, PO Box 115, Dannevirke.
Tel (06) 374 4080 Fax (06) 374 4137

Available for general use without the permission of the operator.

Fees for stopovers exceeding six hours.

Helipad and WDI lighting turned on by prior arrangement with the operator.