

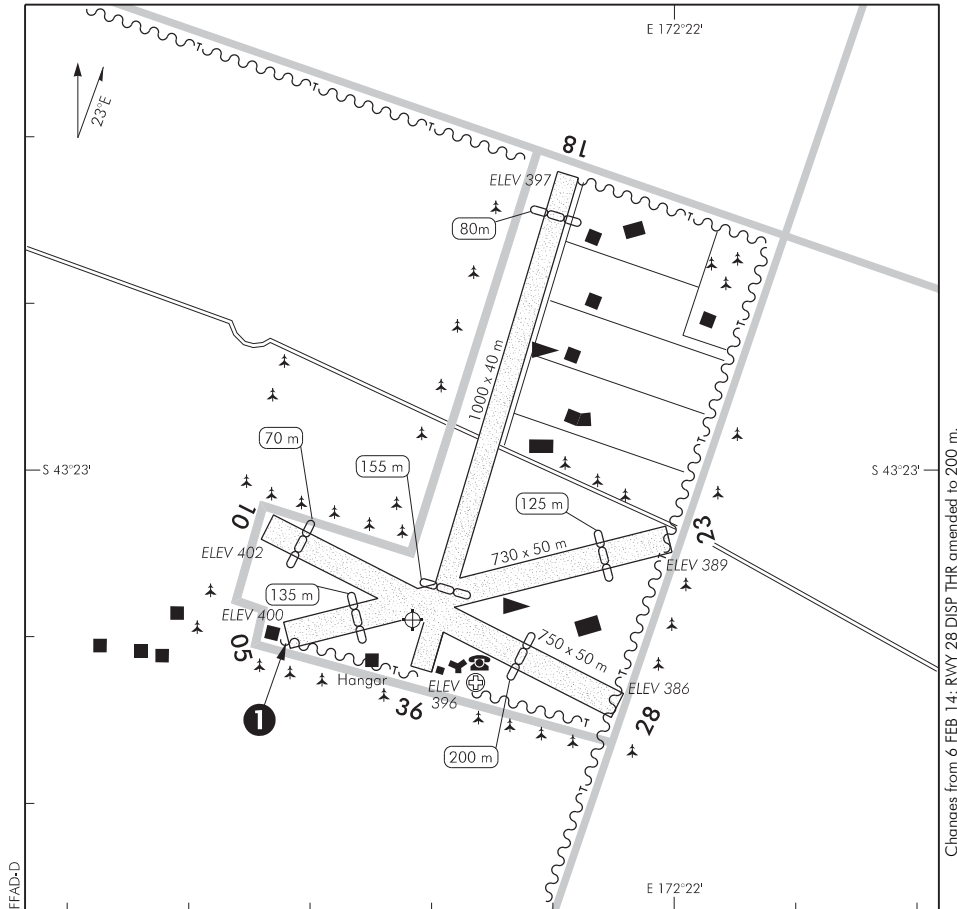
ELEV 402

NZFF

NON-CERTIFICATED

**FOREST FIELD
AERODROME**

UNATTENDED: 119.2



CAUTION: Trees between RWYs 18 and 23 partially obscure operations on either runway from the other

- 1 Starter extension 40 x 15 m.
2. Some undulations in runway surface, particularly on RWY 18/36.

S 43 23 09 E 172 21 38*

Effective: 10 NOV 16

© Civil Aviation Authority

**FOREST FIELD
AERODROME**

RWY

RWY	SFC	Strength	Gp	Slope	ASDA	Take-off distance		LDG DIST
						1:20	1:30	
05 23	Gr	ESWL 9080	4	0.40D 0.40U		645 595		595 605
10 28	Gr	ESWL 9080	4	0.70D 0.70U		550 680		680 550
18 36	Gr	ESWL 9080	6 7	Nil		845 920		920 845

LIGHTING

Nil

FACILITIES

Nil

SUPPLEMENTARY

Operator: P A Collings, 727 Downs Road, Eyrewell, RD6, Rangiora 7476
Tel (03) 312 5589

Available for limited use subject to prior agreement of operator.