

ELEV 70

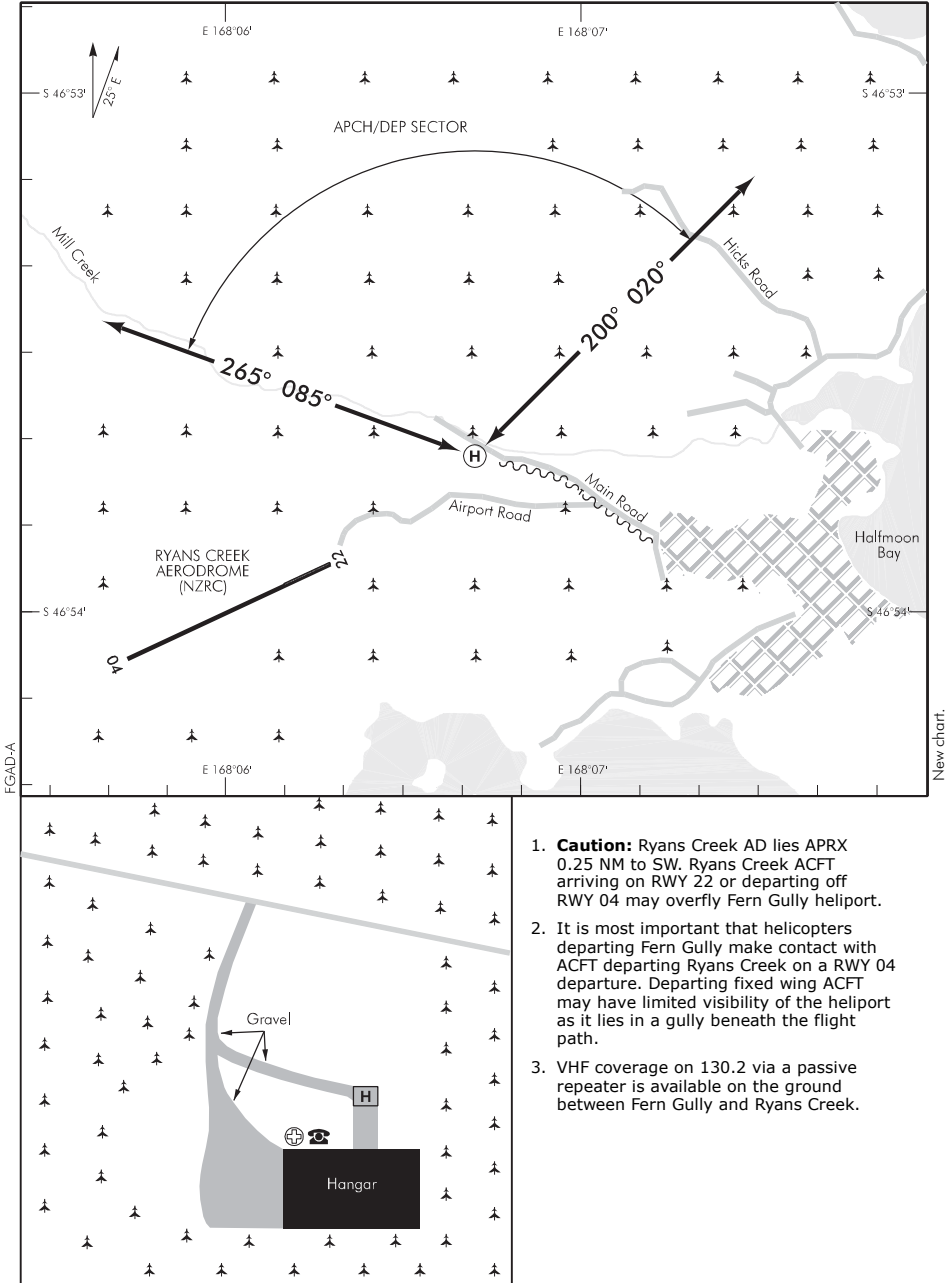
FERN GULLY

NZFG

NON-CERTIFICATED

HELIPORT

UNATTENDED: 130.2



- Caution:** Ryans Creek AD lies APRX 0.25 NM to SW. Ryans Creek ACFT arriving on RWY 22 or departing off RWY 04 may overfly Fern Gully heliport.
- It is most important that helicopters departing Fern Gully make contact with ACFT departing Ryans Creek on a RWY 04 departure. Departing fixed wing ACFT may have limited visibility of the heliport as it lies in a gully beneath the flight path.
- VHF coverage on 130.2 via a passive repeater is available on the ground between Fern Gully and Ryans Creek.

S 46 53 42 E 168 06 42*

Effective: 12 FEB 09

© Civil Aviation Authority

FERN GULLY
HELIPORT

NZFG

NON-CERTIFICATED

FATO/TLOF

| | SIZE | SFC | STRENGTH | MARKINGS |
|------|---------------|------|----------|------------|
| FATO | 20 m Diameter | Gr | | |
| TLOF | 5 m x 5 m | Conc | 4400 | Standard H |

LIGHTING

Nil

FACILITIES

Telephone
Hangarage
Water

SUPPLEMENTARY

Operator: Te Anau Helicopter Services
77 Orbell Crescent
RD1
Te Anau 9679
Tel (03) 219 1155
Email: info@teanauhelipters.com

Available only with prior permission of the operator.