

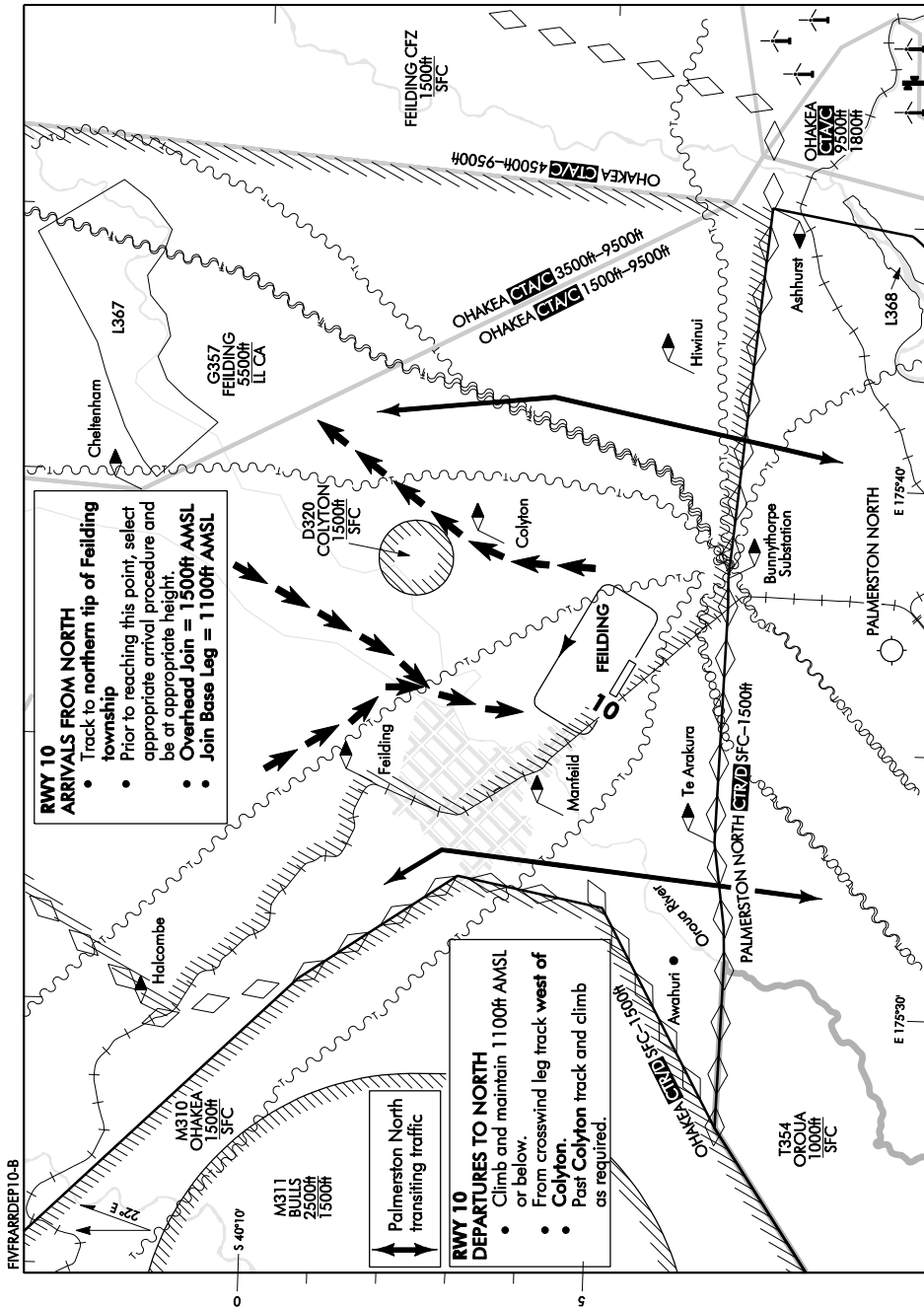
ELEV 214

NZFI

FEILDING

VFR PREFERRED ARRIVAL/DEPARTURE RWY 10

UNATTENDED: 124.1



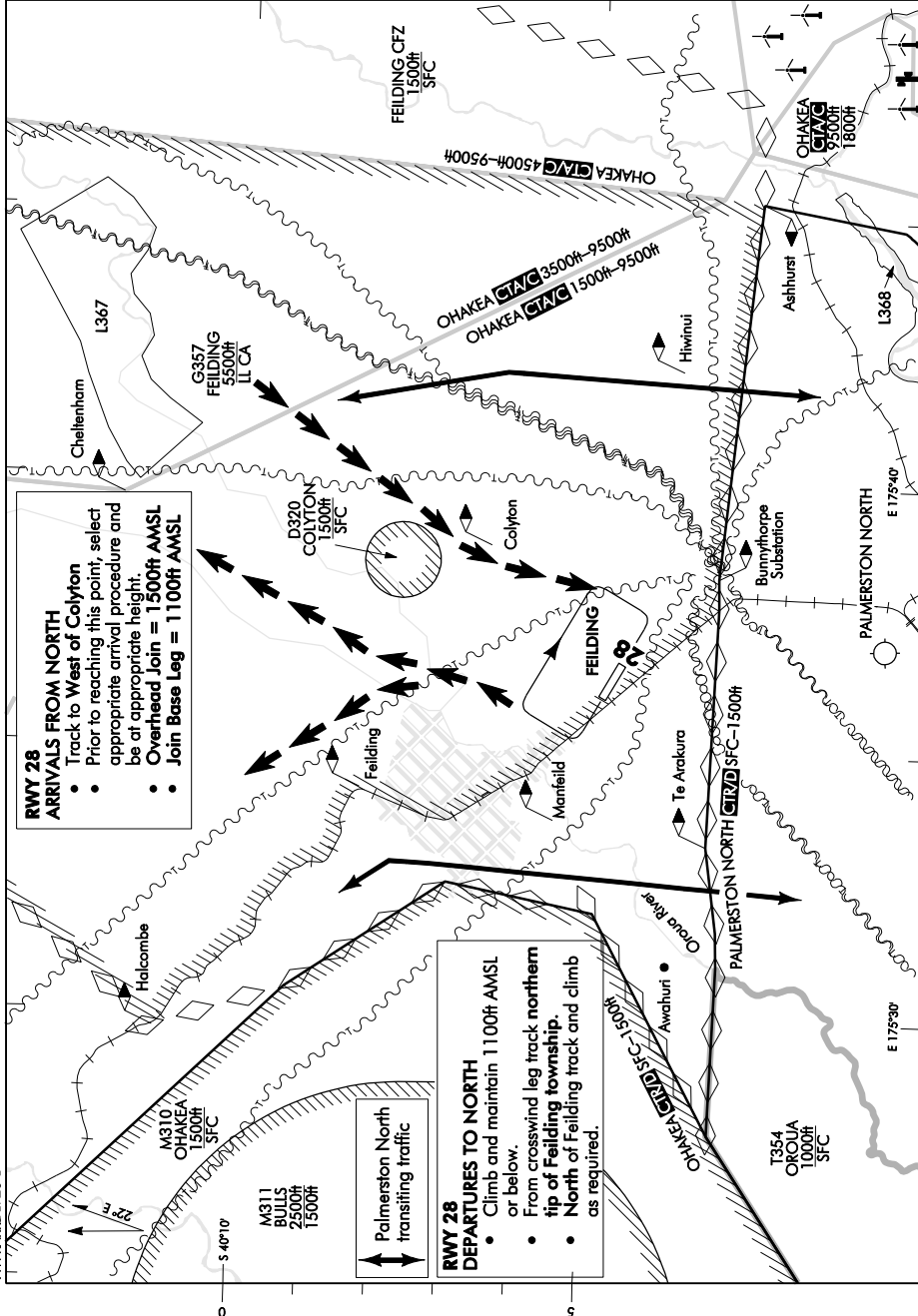
Changes from 7 APR 11: ARR/DEP Tracks; transiting traffic route, VFR Hiwinui.

Effective: 17 NOV 11

FEILDING

VFR PREFERRED ARRIVAL/DEPARTURE RWY 28

UNATTENDED: 124.1



FEILDING

VFR PREFERRED ARRIVAL/DEPARTURE RWY 28

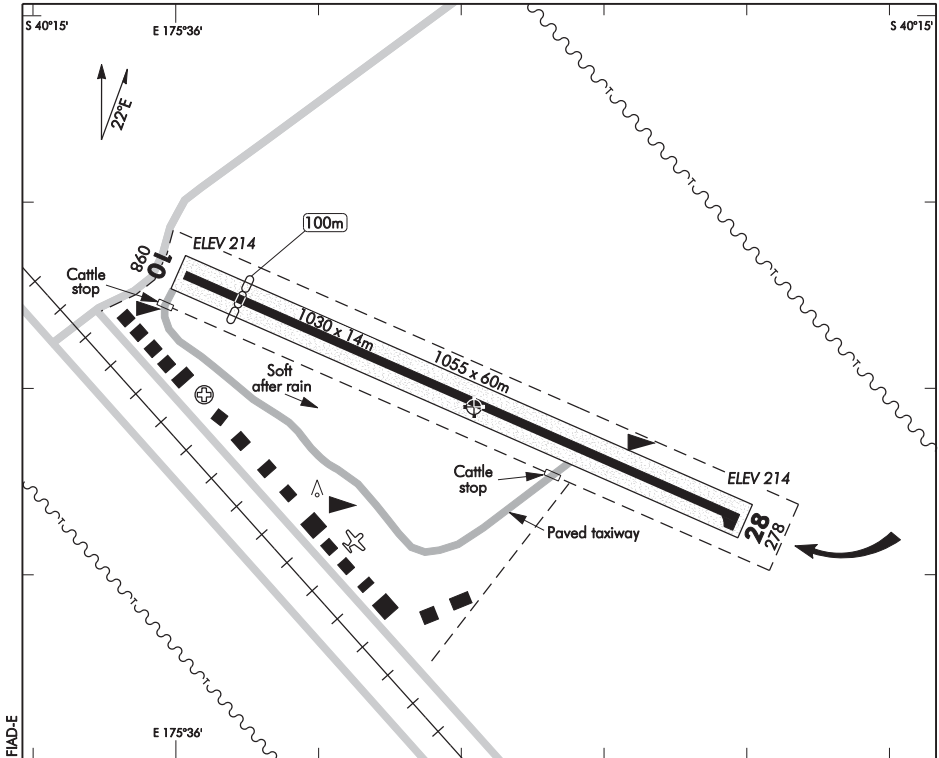
ELEV 214

NZFI

NON-CERTIFICATED

**FEILDING
AERODROME (1)**

UNATTENDED: 124.1



1. Circuit: RWY 10 — Left hand RWY 28 — Right hand
Circuit altitude — 1100ft AMSL Joining altitude — 1500ft AMSL

2. Arrival/Departure Procedures

Arriving and departing north — Refer VFR Preferred Arrival/Departure charts. The preferred method of joining is directly into the downwind or base leg, if this can be done without compromising aircraft in the circuit. If not then continue for an overhead rejoin.

Traffic departing to Palmerston North, refer Palmerston North VFR Arrival Procedures.

CAUTION: Arrival and Departure Traffic to/from Palmerston North. Transiting aircraft should remain clear of the Feilding aerodrome circuit.

3. RWY 28 — All landing aircraft must exit runway via western taxiway.
4. RWY 28 — Aircraft landing on RWY 28 must ensure that there is adequate spacing between aircraft. Spacing of 600m is advised to allow for aircraft landing ahead to roll out and clear runway via western taxiway.

(continued)

S 40 15 21 E 175 36 21*

Effective: 7 FEB 13

© Civil Aviation Authority

**FEILDING
AERODROME (1)**

**FEILDING
AERODROME (2)**

NON-CERTIFICATED

5. RWY 28 — Aircraft are permitted immediate take-off from 700m mark (i.e. eastern entrance to RWY 28) if another aircraft is back-tracking to 1000m threshold.
6. Holding area on threshold of RWY 28 to be used for holding or turning only.
7. All run-up/pre-take-off checks to be done prior to entering RWY 10/28.
8. Surface away from RWY and TWY very soft when wet in winter.
9. Intensive gliding operations may take place particularly during weekends and public holidays.
10. Agricultural aircraft operate from the aerodrome from time to time, usually taking off on RWY 10 and landing on RWY 28. They approach and depart low level.
11. **CAUTION:** Flying by NORDO equipped microlight aircraft may take place at a maximum circuit altitude 600ft AGL.
12. The favoured runway based on wind direction only may be accessed with 3 clicks within 2 seconds on 124.1 MHz.
13. Live weather is available at www.noiseandweather.co.nz

Non-Certificated Aerodrome 3NM SE of Feilding

FEILDING

NZFI

OPERATIONAL DATA**RWY**

RWY	SFC	Strength	Gp	Slope	ASDA	Take-off distance			LDG DIST
						1:20	1:30	1:40	
10 10	B	ESWL 1020	8 7	Nil		1030			930
28 28	B	ESWL 1020	7 8	Nil		930			1030

LIGHTING

- PAL 124.1 Non-standard operation — transmit 4 pulses within 3 seconds.
PAL not monitored.

FACILITIES

- Fuel: Z Energy Avgas 100, access via Z card
Avgas 100, Carnet Card swipecard
Jet A1 airfuels.com swipecard

Limited hangarage

Repairs

SUPPLEMENTARY

Operator: Feilding Aerodrome (Inc), PO Box 305, Feilding
Tel (06) 323 6240 or (027) 443 8371
Fax (06) 323 7935

Available for general use without the permission of the operator.

Landing fees charged through Greasr only — late payments incur an admin fee.

By visiting NZFI you agree to our Terms and Conditions of Use — these can be found in full at www.Greasr.com/ad/nxfi

