

ELEV 305

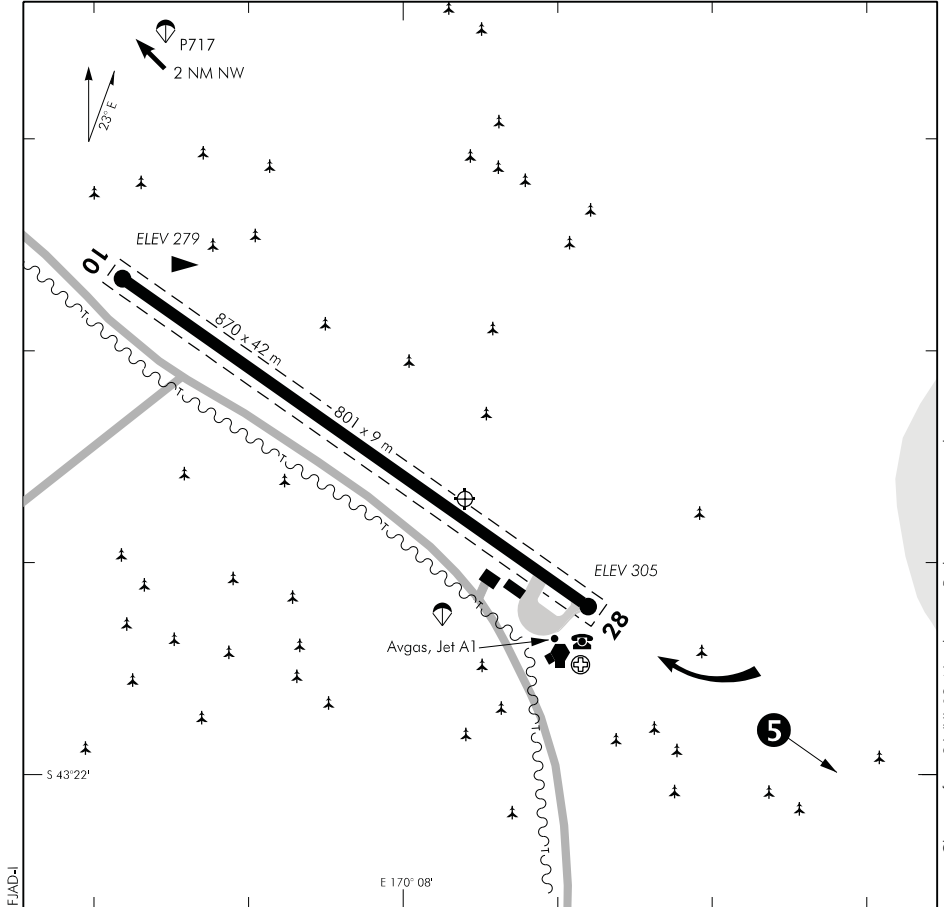
NZFJ

NON-CERTIFICATED

**FRANZ JOSEF
AERODROME**

CHRISTCHURCH INFORMATION: 118.5

ALPS TRAFFIC/UNATTENDED: 118.6



1. Circuit: RWY 28 — Right hand
RWY 10 — Left hand
2. Grass soft if wet. Operations to be confined to RWY and gravel areas.
3. Intensive helicopter operations from helipads adjacent to Franz Josef township.
4. Christchurch information frequency unreliable below 3000 ft.
5. Isolated high terrain and trees 1 km from RWY 28 threshold on extended centreline.
6. VFR operations within Southern Alps MBZ are subject to special procedures. Refer to ENR 1.16 VFR Procedures, Mount Cook/Westland.
7. Skydiving operations exist from the aerodrome with PLA located south of the road as marked. Skydive aircraft will broadcast on 118.6 MHz and will not commence dropping whilst traffic is joining overhead. Aircraft should remain clear of the overhead position once a skydive drop has begun.
8. Alternate PLA located 2 NM NW of aerodrome. Again Skydive aircraft will not commence dropping while traffic is joining or established in the circuit.

S 43 21 47 E 170 08 04

Effective: 23 JUL 15

© Civil Aviation Authority

**FRANZ JOSEF
AERODROME**

Changes from 26 JUL 12: New hangar. Parking area removed.

NZFJ

RWY

RWY	SFC	Strength	Gp	Slope	ASDA	Take-off distance			LDG DIST
						1:20	1:30	1:40	
10 10	B	ESWL 2270	5 7	1.0U		801			801
28 28	B	ESWL 2270	7 5	1.0D		801			801

LIGHTING

Nil

FACILITIES

Fuel: Z Energy Airstop, Jet A1, Avgas 100, Access via Z Card

SUPPLEMENTARY

Operator: Air Safaris and Services (NZ) Ltd
PO Box 71, Lake Tekapo

Franz Josef Tel (03) 752 0716
Fax (03) 752 0701

Lake Tekapo Tel (03) 680 6880
Fax (03) 680 6740

Available for use strictly subject to prior approval and briefing by the aerodrome operator.

Landing fees payable at honesty box beside hangar.