

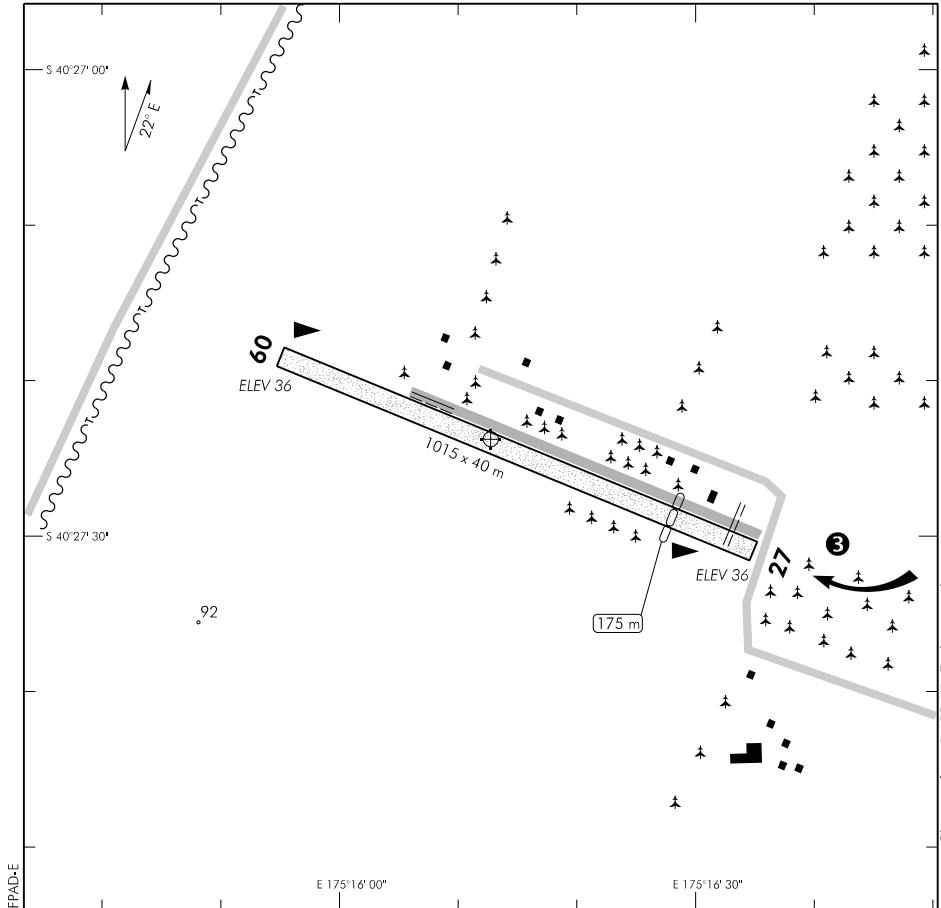
ELEV 36

NZFP

NON-CERTIFICATED

**FOXPINE
AERODROME**

UNATTENDED: 122.6



1. **CAUTION:** Turbulence and windshear can be expected in crosswinds.
2. Circuit: RWY 09 — Left hand
RWY 27 — Right hand
3. Trees 85 m east of runway end require 11° angled approach to RWY 27.
Take-off RWY 09 — turn left 11° as soon as practicable.
4. Traffic landing RWY 27 clear right to taxiway as soon as practicable.
Landing RWY 09 clear left to taxiway as soon as practicable.
5. Extensive flight training activity.
6. **CAUTION:** Mowing of runways and operational areas may take place at any time.
7. Standard overhead rejoin advised.
8. **CAUTION:** Rotating irrigator operates occasionally between road and western end of RWY.

S 40 27 24 E 175 16 13*

Effective: 23 JUL 15

© Civil Aviation Authority

**FOXPINE
AERODROME**

NZFP

OPERATIONAL DATA**RWY**

RWY	SFC	Strength	Gp	Slope	ASDA	Take-off distance			LDG DIST
						1:20	1:30	1:40	
09 09	Gr	ESWL 9080	7 8	Nil	1015	840			1015
27 27	Gr	ESWL 9080	8 7	Nil	1015		1015		840

LIGHTING

Nil

FACILITIES

D Microlight flight instruction

Hangarage

Accommodation

SUPPLEMENTARY

Operator: Foxpine Airpark Ltd, PO Box 90, Foxton.
 Tel (06) 363 7909
 Mobile 021 429 931
 email: j.lester@xtra.co.nz

Available for general use and private operations.

Landing and overnight fees payable. Additional costs for invoiced charges.
 Commercial and special operations subject to prior agreement of the operator.

I Light aircraft parking on grass areas east and west of the pilot centre.

Contacts: J Lester (06) 363 7909
 (021) 429 931