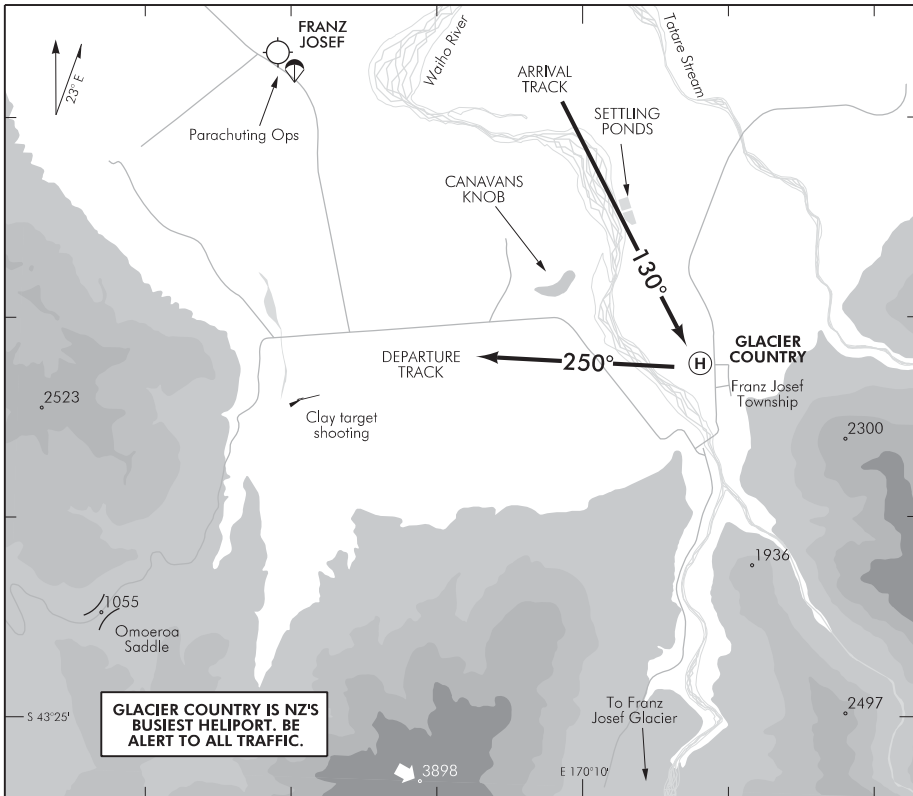


ELEV 450  
NZGH

NON-CERTIFICATED

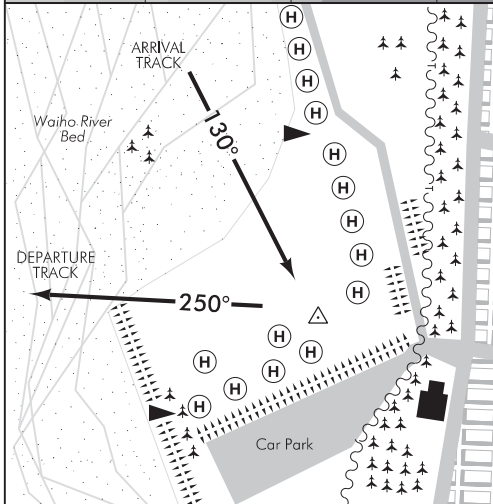
# GLACIER COUNTRY HELIPORT (1)

ALPS TRAFFIC/UNATTENDED: 118.6



GHAD-G

Changes from 19 JUL 18: FATO symbol added.



1. Christchurch Information 118.5 unreliable below 3000 ft AMSL.
2. VFR Operations within the Southern Alps MBZ are subject to special procedures. Refer ENR 1.16 VFR Procedures Mt Cook/ Westland.
3. Heliport is NOT available for itinerant aircraft.
4. Noise Abatement:
  - Minimise time spent at flight idle at heliport.
  - Avoid overflying residential areas.
5. **CAUTION:**
  - Intensive helicopter operations can be expected at all times but peaks between NOV and MAR in favourable weather conditions.

(Continued)

S 43 23 14 E 170 10 48

Effective: 13 SEP 18

© Civil Aviation Authority

# GLACIER COUNTRY HELIPORT (1)

---

**GLACIER COUNTRY**  
**HELIPORT (2)**

---

- Powerlines and trees on eastern boundary of the heliport.
- Commercial skydiving from altitudes up to 20,000 ft AMSL in operation at Franz Josef AD 2.5 NM NW. Skydiving activity broadcast on 118.6 MHz.
- Commercial scenic flight operations at Franz Josef AD 2.5 NM NW.
- Commercial scenic flight operations at Greens Rd, 2.1 NM north.
- Steeply rising mountainous terrain 0.5 NM E of heliport.
- Birds (seagulls) regularly at or near Canavans Knob and settling ponds.
- Clay target shooting site 2 NM W of heliport.